

FOR ENQUIRIES PLEASE CONTACT: Q INVESTMENTS INTERNATIONAL LTD | T: +447985487333 | E: OFFICE@QINVESTMENTS.LONDON | W: [HTTPS://QINVESTMENTS.LONDON](https://qinvestments.london)

THE KING'S COLLECTION

AT

CHELSEA CREEK



St George
Designed for life

Computer generated image is indicative only and subject to change.

LOCATED IN THE EXCLUSIVE
NEIGHBOURHOOD, JUST
MOMENTS FROM THE POPULAR
KING'S ROAD, THE KING'S
COLLECTION AT CHELSEA CREEK
IS LOCATED WITHIN THE KING'S
TOWER AND COMPRISES OF
MANHATTAN, 1 & 2-BEDROOM
LUXURY APARTMENTS IN A
TRANQUIL WATERSIDE SETTING.



Computer generated image is indicative
only and subject to change.



Computer generated image is indicative only and subject to change.
Map is for illustration purposes and shows approximate locations only.



Computer generated image is indicative only and subject to change.

Towering 31-stories above the City, the King's Tower boasts breathtaking views of London and the River Thames. Each apartment features a balcony and is designed to offer residents an abundance of natural light.



Computer generated image is indicative only and subject to change.

THE VISION

Chelsea Creek brings a characteristically European style of waterside living to Central London. Award-winning architectural practice Squire and Partners looked to Amsterdam and Copenhagen for inspiration. Bright, contemporary apartments overlooking restful canal waterways and tree-lined promenades offer a refreshingly distinctive urban lifestyle.



Architect: Michael Squire

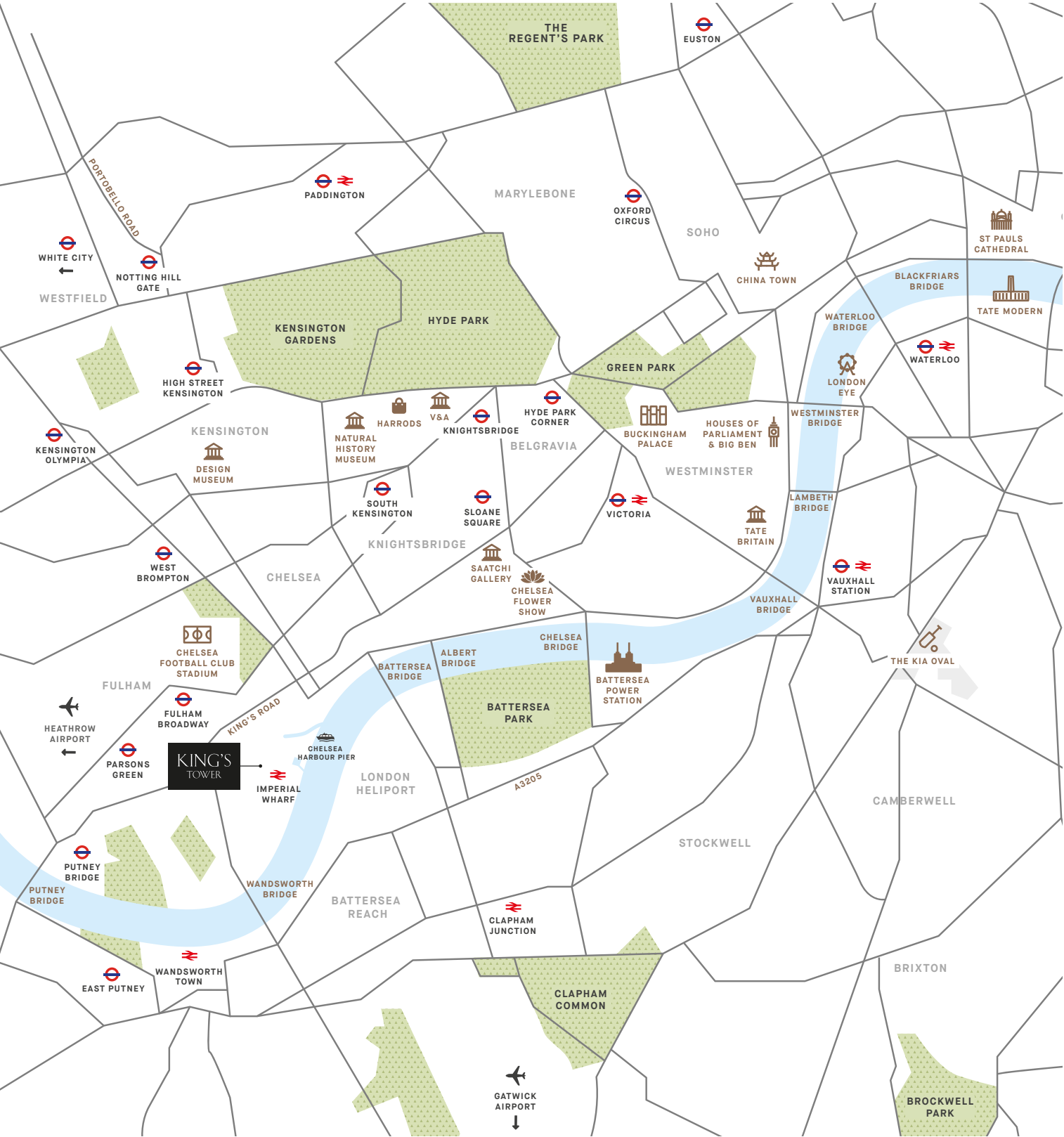
A TRANQUIL WATERSIDE SETTING

Discover peace and tranquility away from fast-paced city life. Over half of Chelsea Creek is dedicated to carefully considered open spaces, such as landscaped gardens, lawns and flowerbeds. Wander down tree-lined avenues and walk over beautifully designed bridges to enjoy the meandering waterways unique to Chelsea Creek.



GETTING AROUND

Conveniently located on the River Thames and close to a range of transport options, it's easy to move around and discover more of the vibrant city from your base at Chelsea Creek.



Map is not to scale and shows approximate locations only



WALKING*

| | |
|------------------|---------|
| Imperial Wharf | 4 Mins |
| Chelsea Harbour | 5 Mins |
| King's Road | 8 Mins |
| Fulham Broadway | 14 Mins |
| Hurlingham Club | 23 Mins |
| Battersea Park | 35 Mins |
| South Kensington | 41 Mins |
| Saatchi Gallery | 42 Mins |
| Sloane Square | 46 Mins |
| Design Museum | 48 Mins |

DRIVING*

| | |
|--------------------------------|--------------|
| Sloane Square | 10 Mins |
| Chelsea & Westminster Hospital | 10 Mins |
| Knightsbridge | 12 Mins |
| Westfield | 14 Mins |
| Hyde Park | 16 Mins |
| Park Lane | 16 Mins |
| Oxford Street | 20 Mins |
| King's Cross | 30 Mins |
| Heathrow Airport | 35 Mins |
| Gatwick Airport | 55 Mins |
| London City Airport | 60 Mins |
| Luton Airport | 1 Hr 15 Mins |
| Stansted Airport | 1 Hr 30 Mins |

LONDON HELIPORT

Located within easy reach, London Heliport is open daily from 7am until 10.30pm. Extended operating hours are available by prior appointment.

PUBLIC TRANSPORT*

| | |
|------------------------|---------|
| West Brompton | 3 Mins |
| Clapham Junction | 5 Mins |
| Kensington (Olympia) | 6 Mins |
| Shepherd's Bush | 8 Mins |
| Victoria | 21 Mins |
| High Street Kensington | 23 Mins |
| Bond Street | 24 Mins |
| Oxford Circus | 25 Mins |
| Imperial College | 28 Mins |
| Gatwick Airport | 42 Mins |
| Heathrow Airport | 54 Mins |

CYCLING*

| | |
|------------------|---------|
| Fulham Broadway | 3 Mins |
| Parsons Green | 4 Mins |
| South Kensington | 10 Mins |
| Sloane Square | 12 Mins |
| Harrods | 12 Mins |
| Hyde Park | 17 Mins |
| White City | 21 Mins |
| Oxford Circus | 25 Mins |

RIVER TAXI

Fast, frequent and exhilarating, the river taxi is a popular choice for hopping to and from Chelsea Harbour, from right outside Imperial Wharf to Blackfriars, Putney and other favourite spots. The service runs Monday to Friday from 6.30am.

*Travel times are approximate only. Source: Google Maps.

DISCOVER LIFE ON A HIGHER LEVEL

Experience the Halcyon Club. A uniquely appointed club for residents of the King's Tower and Westwood House, featuring a fitness centre, swimming pool, spa with sauna and steam-room, a private cinema and meeting room.

Its crowning glory is a 31st floor sky lounge and terrace with enviable views towards the city.



Computer generated image is indicative only and subject to change.



CINEMA ROOM

Relax and unwind while watching the latest movie or sporting event in the deluxe cinema room.

Computer generated image is indicative only and subject to change.



A PLACE WHERE CLASSIC BRITISH MEETS CONTEMPORARY

Taking inspiration from Chelsea's rich arts and design culture, the apartments are a contemporary reimagining of traditional London style.



Computer generated image is indicative only and subject to change.



Computer generated image is indicative only and subject to change.

KNIGHTSBRIDGE COLLECTION

Computer generated image is indicative only and subject to change.



Black marble floor and wall tiles bring sophistication to this sultry and sleek bathroom. Featuring 3D contrasting wall tiles and stylish brushed brass fittings.

Your attention is drawn to the fact that in rare circumstances it may not be possible to obtain the exact products or materials referred to in the specification. Chelsea Creek reserves the right to alter, amend or update the specification, which may include changes in the colour, material and/or brand specified. In such cases, a similar alternative will be provided. Chelsea Creek reserves the right to make these changes as required. A number of choices and options are available to personalise your home. Choices and options are subject to timeframes, availability and change.

Computer generated image is indicative only and subject to change.



Elegant beaded profile to herbaceous green kitchen cabinet doors. Brushed brass ironmongery and composite stone worktops and splashbacks.

KENSINGTON COLLECTION

Computer generated image is indicative only and subject to change.



White marble floor and wall tiles create a sophisticated space with contrasting 3D wall tiles and brushed brass fittings.

Computer generated image is indicative only and subject to change.



Elegant beaded profile to stylish blue kitchen cabinet doors. Brushed brass ironmongery and composite stone worktops and splashbacks.

Your attention is drawn to the fact that in rare circumstances it may not be possible to obtain the exact products or materials referred to in the specification. Chelsea Creek reserves the right to alter, amend or update the specification, which may include changes in the colour, material and/or brand specified. In such cases, a similar alternative will be provided. Chelsea Creek reserves the right to make these changes as required. A number of choices and options are available to personalise your home. Choices and options are subject to timeframes, availability and change.

CHELSEA COLLECTION

Computer generated image is indicative only and subject to change.



A serene and calming space with white marble wall tiles and black marble floor tiles. Featuring contrasting 3D wall tiles and brushed brass fittings.

Your attention is drawn to the fact that in rare circumstances it may not be possible to obtain the exact products or materials referred to in the specification. Chelsea Creek reserves the right to alter, amend or update the specification, which may include changes in the colour, material and/or brand specified. In such cases, a similar alternative will be provided. Chelsea Creek reserves the right to make these changes as required. A number of choices and options are available to personalise your home. Choices and options are subject to timeframes, availability and change.

Computer generated image is indicative only and subject to change.



Elegant beaded profile to soft taupe kitchen cabinet doors. Brushed brass ironmongery and composite stone worktops and splashbacks.

FLOORPLANS

A 31 storey tower offering a collection of Manhattan, 1, 2 and 3 bedroom luxury apartments and duplex penthouses in a tranquil waterside setting.



| APARTMENT | LEVEL | PAGE |
|---|----------------------------|------|
| MANHATTAN APARTMENTS | | |
| 1113, 1119, 1126, 1133, 1140, 1147 & 1154 | 1 - 7 | 28 |
| 1114, 1120, 1127, 1134, 1141, 1148 & 1155 | 1 - 7 | 29 |
| 1 BEDROOM APARTMENTS | | |
| 1112 & 1118 | 1 & 2 | 30 |
| 1125, 1132 & 1153 | 3, 4 & 7 | 31 |
| 1139 & 1146 | 5 & 6 | 32 |
| 1116 | 1 | 33 |
| 1123 | 2 | 34 |
| 1124 | 2 | 35 |
| 1138, 1164, 1184, 1204, 1219 & 1244 | 4, 8, 12, 16, 19 & 24 | 36 |
| 1131, 1159, 1179, 1199 & 1224 | 3, 7, 11, 15 & 20 | 37 |
| 1152, 1174, 1194, 1209, 1229, 1249 & 1254 | 6, 10, 14, 17, 21, 25 & 26 | 38 |
| 1145, 1169, 1189, 1214 & 1234 | 5, 9, 13, 18 & 22 | 39 |
| 1259 | 27 | 40 |
| 1130, 1137 & 1158 | 3, 4 & 7 | 41 |
| 1151 | 6 | 42 |
| 2 BEDROOM APARTMENTS | | |
| 1117 | 1 | 43 |
| 1121 | 2 | 44 |
| 1135 | 4 | 45 |
| 1142 & 1149 | 5 & 6 | 46 |
| 1160 | 8 | 47 |
| 1165 | 9 | 48 |

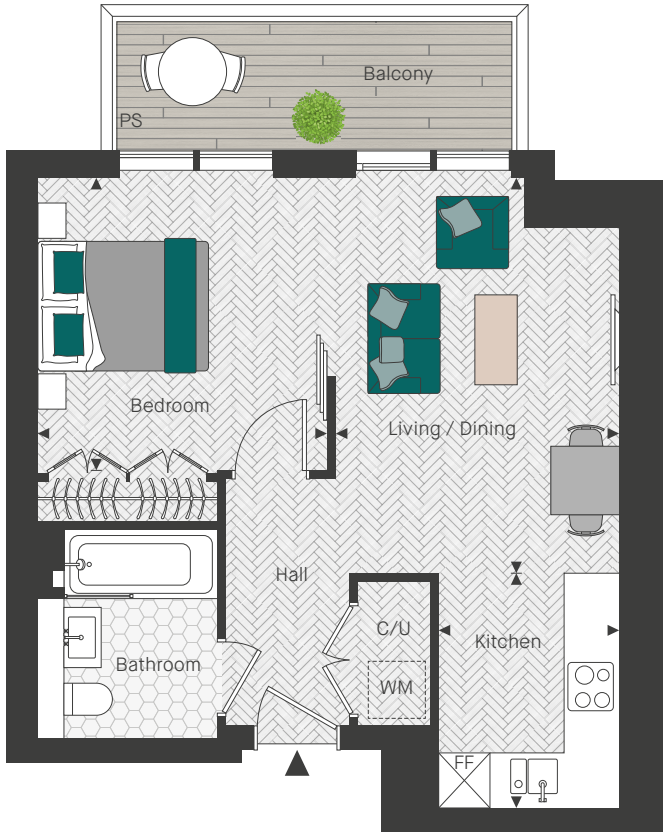
MANHATTAN APARTMENT

APARTMENTS 1113*, 1119*, 1126, 1133, 1140, 1147 & 1154
LEVELS 1-7

NORTH



View towards
King's Road Park

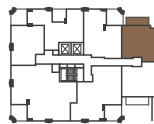


| | | |
|---------------------|---------------|------------------|
| TOTAL INTERNAL AREA | 46.16 SQ M | 497 SQ FT |
| LIVING / DINING | 3.33M X 4.63M | 10' 11" X 15' 2" |
| KITCHEN | 2.12M X 2.76M | 6' 11" X 9' 0" |
| BEDROOM | 3.38M X 3.43M | 11' 1" X 11' 3" |
| BALCONY | 6.97 SQ M | 75 SQ FT |

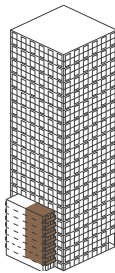
LEVEL 1



LEVEL 2



ELEVATION
NORTH WEST



Washing machine

Integrated fridge freezer

4 ring hob

Cupboard

Utility room

TV

PS Privacy screen

*Apartments 1113 & 1119 are wheelchair adaptable, please contact the Sales Team for more information.

MANHATTAN APARTMENT

APARTMENTS 1114, 1120, 1127, 1134, 1141, 1148 & 1155
LEVELS 1-7

NORTH



View towards
canal

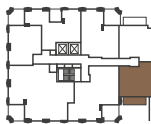


| | | |
|---------------------|---------------|-----------------|
| TOTAL INTERNAL AREA | 44.69 SQ M | 481 SQ FT |
| LIVING / DINING | 3.44M X 4.31M | 11' 3" X 14' 1" |
| KITCHEN | 2.22M X 2.76M | 7' 3" X 9' 0" |
| BEDROOM | 3.27M X 3.10M | 10' 8" X 10' 2" |
| BALCONY | 6.95 SQ M | 75 SQ FT |

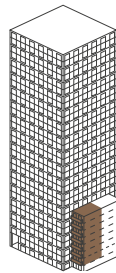
LEVEL 1



LEVEL 3



ELEVATION
SOUTH EAST



Floor plans shown are approximate measurements only. Exact layout and size may vary. All measurements may vary within a tolerance of 5%.
Please note, the furniture is not included. Please contact the Chelsea Creek Sales Team for further details.

1 BEDROOM

APARTMENTS 1112 & 1118
LEVELS 1 & 2

NORTH



View towards
King's Road Park



| | | |
|---------------------|---------------|-----------------|
| TOTAL INTERNAL AREA | 63.81 SQ M | 687 SQ FT |
| LIVING / DINING | 4.62M X 4.35M | 15' 2" X 14' 3" |
| KITCHEN | 2.67M X 2.45M | 8' 9" X 8' 1" |
| BEDROOM | 3.25M X 3.37M | 10' 8" X 11' 1" |
| BALCONY | 10.08 SQ M | 108 SQ FT |

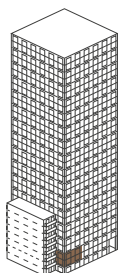
LEVEL 1



LEVEL 2



ELEVATION
NORTH WEST
NORTH EAST



Washing machine

Integrated fridge freezer

4 ring hob

C Cupboard

U Utility room

TV

PS Privacy screen

*Apartment 1112 is wheelchair adaptable, please contact the Sales Team for more information.

1 BEDROOM

APARTMENTS 1125, 1132 & 1153
LEVELS 3, 4 & 7

NORTH

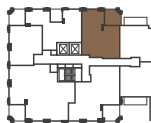


View towards
King's Road Park

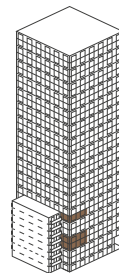


| | | |
|---------------------|---------------|-----------------|
| TOTAL INTERNAL AREA | 63.67 SQ M | 685 SQ FT |
| LIVING / DINING | 4.63M X 4.35M | 15' 2" X 14' 3" |
| KITCHEN | 2.67M X 2.45M | 8' 9" X 8' 1" |
| BEDROOM | 3.25M X 3.37M | 10' 8" X 11' 1" |
| BALCONY | 10.08 SQ M | 108 SQ FT |

LEVEL 3



ELEVATION
NORTH WEST
NORTH EAST



Floor plans shown are approximate measurements only. Exact layout and size may vary. All measurements may vary within a tolerance of 5%.
Please note, the furniture is not included. Please contact the Chelsea Creek Sales Team for further details.

1 BEDROOM

APARTMENTS 1139 & 1146
LEVELS 5 & 6

NORTH



View towards
King's Road Park

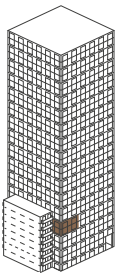


| | | |
|---------------------|---------------|-----------------|
| TOTAL INTERNAL AREA | 63.67 SQ M | 685 SQ FT |
| LIVING / DINING | 4.63M X 4.35M | 15' 2" X 14' 3" |
| KITCHEN | 2.67M X 2.45M | 8' 9" X 8' 0" |
| BEDROOM | 3.25M X 3.37M | 10' 8" X 11' 1" |
| BALCONY | 10.08 SQ M | 108 SQ FT |

LEVEL 5



ELEVATION
NORTH WEST
NORTH EAST



Washing machine Integrated fridge freezer 4 ring hob C Cupboard U Utility room TV PS Privacy screen

1 BEDROOM

APARTMENT 1116
LEVEL 1

NORTH



View towards
Fulham



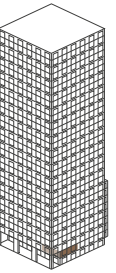
View of
landscaping

| | | |
|---------------------|---------------|-----------------|
| TOTAL INTERNAL AREA | 63.56 SQ M | 684 SQ FT |
| LIVING / DINING | 4.92M X 4.10M | 16' 2" X 13' 5" |
| KITCHEN | 1.89M X 3.28M | 6' 2" X 10' 9" |
| BEDROOM | 3.00M X 4.69M | 9' 10" X 15' 4" |
| BALCONY | 6.73 SQ M | 72 SQ FT |

LEVEL 1



ELEVATION
SOUTH EAST
SOUTH WEST

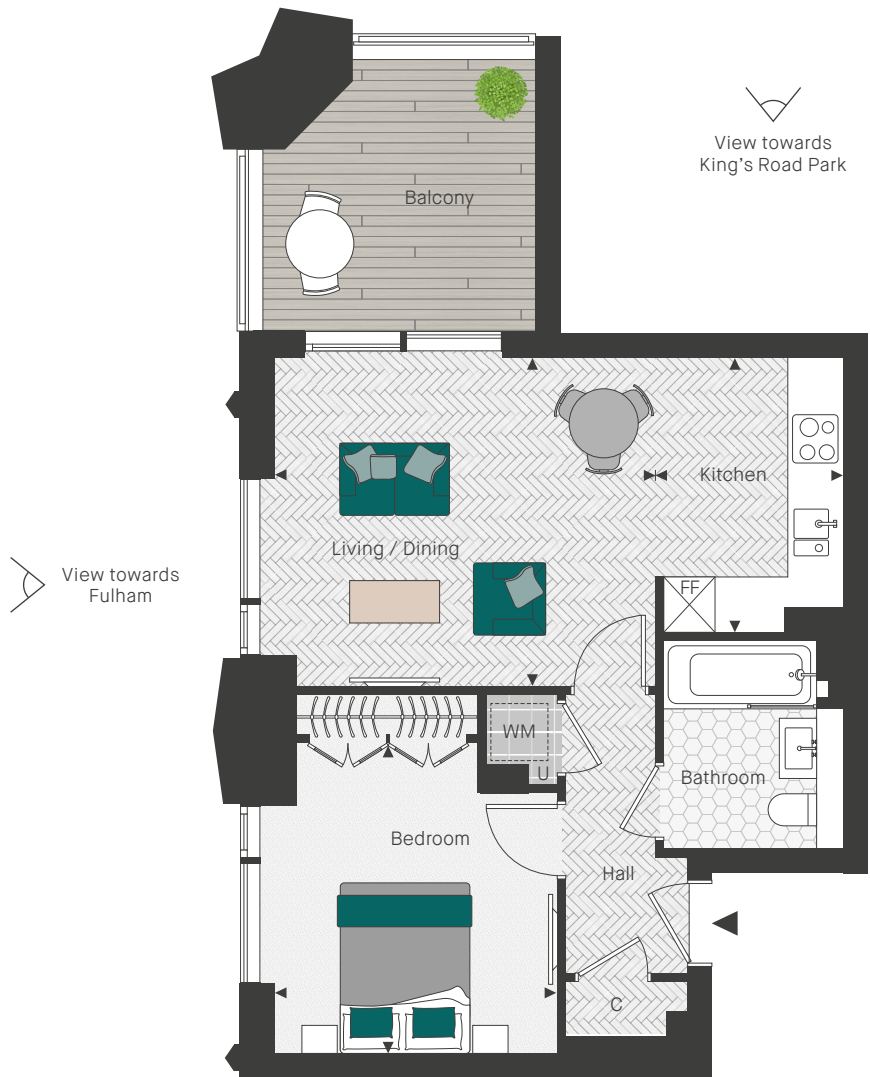


Floor plans shown are approximate measurements only. Exact layout and size may vary. All measurements may vary within a tolerance of 5%. Please note, the furniture is not included. Please contact the Chelsea Creek Sales Team for further details.

1 BEDROOM

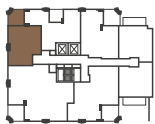
APARTMENT 1123
LEVEL 2

NORTH

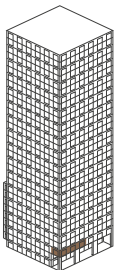


| | | |
|---------------------|---------------|-------------------|
| TOTAL INTERNAL AREA | 49.97 SQ M | 538 SQ FT |
| LIVING / DINING | 4.45M X 3.86M | 14' 7" X 12' 8" |
| KITCHEN | 2.20M X 3.21M | 7' 2" X 10' 7" |
| BEDROOM | 3.30M X 3.60M | 10' 10" X 11' 10" |
| BALCONY | 10.08 SQ M | 108 SQ FT |

LEVEL 2



ELEVATION
SOUTH WEST
NORTH WEST



Washing machine Integrated fridge freezer 4 ring hob C Cupboard U Utility room TV PS Privacy screen

1 BEDROOM

APARTMENT 1124
LEVEL 2

NORTH

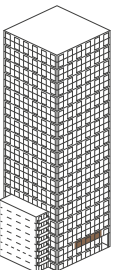


| | | |
|---------------------|---------------|------------------|
| TOTAL INTERNAL AREA | 57.35 SQ M | 617 SQ FT |
| LIVING ROOM | 3.17M X 3.91M | 10' 5" X 12' 10" |
| KITCHEN / DINING | 4.54M X 2.54M | 14' 11" X 8' 4" |
| BEDROOM | 4.30M X 3.08M | 14' 1" X 10' 1" |
| BALCONY | 7.04 SQ M | 76 SQ FT |

LEVEL 2



ELEVATION
NORTH WEST



Floor plans shown are approximate measurements only. Exact layout and size may vary. All measurements may vary within a tolerance of 5%. Please note, the furniture is not included. Please contact the Chelsea Creek Sales Team for further details.

1 BEDROOM

APARTMENTS 1138, 1164, 1184, 1204, 1219 & 1244
LEVELS 4, 8, 12, 16, 19 & 24

NORTH

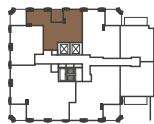


View towards
King's Road Park

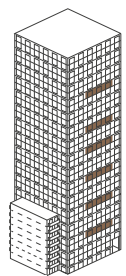


| | | |
|---------------------|---------------|------------------|
| TOTAL INTERNAL AREA | 58.15 SQ M | 626 SQ FT |
| LIVING ROOM | 3.28M X 3.91M | 10' 9" X 12' 10" |
| KITCHEN / DINING | 4.54M X 2.54M | 14' 11" X 8' 4" |
| BEDROOM | 4.30M X 2.83M | 14' 1" X 9' 3" |
| BALCONY | 6.02 SQ M | 65 SQ FT |

LEVEL 4



ELEVATION
NORTH WEST



LEVEL 12



LEVEL 8



Washing machine

Integrated fridge freezer

4 ring hob

C Cupboard

U Utility room

TV

PS Privacy screen

1 BEDROOM

APARTMENTS 1131, 1159, 1179, 1199 & 1224
LEVELS 3, 7, 11, 15 & 20

NORTH

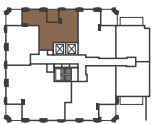


View towards
King's Road Park

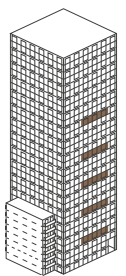


| | | |
|---------------------|---------------|------------------|
| TOTAL INTERNAL AREA | 58.15 SQ M | 626 SQ FT |
| LIVING ROOM | 3.28M X 3.91M | 10' 9" X 12' 10" |
| KITCHEN / DINING | 4.54M X 2.54M | 14' 11" X 8' 4" |
| BEDROOM | 4.30M X 2.83M | 14' 1" X 9' 3" |
| BALCONY | 6.02 SQ M | 65 SQ FT |

LEVEL 3



ELEVATION
NORTH WEST



LEVEL 11



Floor plans shown are approximate measurements only. Exact layout and size may vary. All measurements may vary within a tolerance of 5%.
Please note, the furniture is not included. Please contact the Chelsea Creek Sales Team for further details.

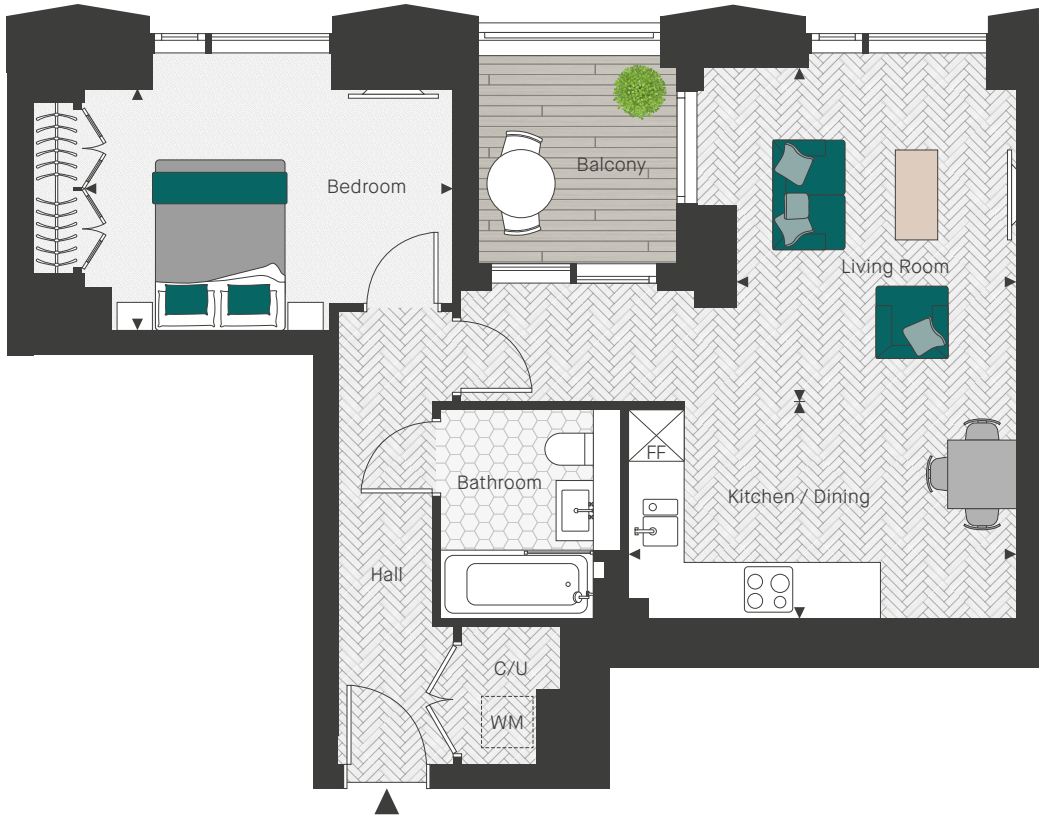
1 BEDROOM

APARTMENTS 1152, 1174, 1194, 1209, 1229, 1249 & 1254
LEVELS 6, 10, 14, 17, 21, 25 & 26

NORTH

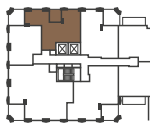


View towards
King's Road Park



| | | |
|---------------------|---------------|------------------|
| TOTAL INTERNAL AREA | 58.15 SQ M | 626 SQ FT |
| LIVING ROOM | 3.28M X 3.91M | 10' 9" X 12' 10" |
| KITCHEN / DINING | 4.54M X 2.54M | 14' 11" X 8' 4" |
| BEDROOM | 4.30M X 2.83M | 14' 1" X 9' 3" |
| BALCONY | 6.02 SQ M | 65 SQ FT |

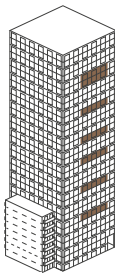
LEVEL 6



LEVEL 10



ELEVATION
NORTH WEST



Washing machine

Integrated fridge freezer

4 ring hob

C Cupboard

U Utility room

TV

PS Privacy screen

1 BEDROOM

APARTMENTS 1145, 1169, 1189, 1214, & 1234
LEVELS 5, 9, 13, 18 & 22

NORTH

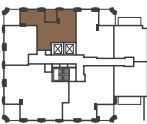


View towards
King's Road Park



| | | |
|---------------------|---------------|------------------|
| TOTAL INTERNAL AREA | 58.15 SQ M | 626 SQ FT |
| LIVING ROOM | 3.28M X 3.91M | 10' 9" X 12' 10" |
| KITCHEN / DINING | 4.54M X 2.54M | 14' 11" X 8' 4" |
| BEDROOM | 4.30M X 2.83M | 14' 1" X 9' 3" |
| BALCONY | 6.02 SQ M | 65 SQ FT |

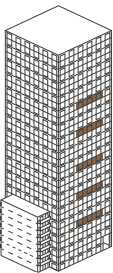
LEVEL 5



LEVEL 9



ELEVATION
NORTH WEST



Floor plans shown are approximate measurements only. Exact layout and size may vary. All measurements may vary within a tolerance of 5%.
Please note, the furniture is not included. Please contact the Chelsea Creek Sales Team for further details.

1 BEDROOM

APARTMENT 1259
LEVEL 27

NORTH



View towards
King's Road Park

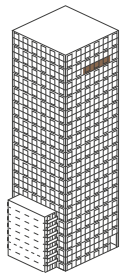


| | | |
|---------------------|---------------|------------------|
| TOTAL INTERNAL AREA | 57.25 SQ M | 616 SQ FT |
| LIVING ROOM | 3.17M X 3.91M | 10' 5" X 12' 10" |
| KITCHEN / DINING | 4.54M X 2.54M | 14' 11" X 8' 4" |
| BEDROOM | 4.30M X 3.08M | 14' 1" X 10' 1" |
| BALCONY | 7.07 SQ M | 76 SQ FT |

LEVEL 27



ELEVATION
NORTH WEST



Washing machine Integrated fridge freezer 4 ring hob C Cupboard U Utility room TV PS Privacy screen

1 BEDROOM

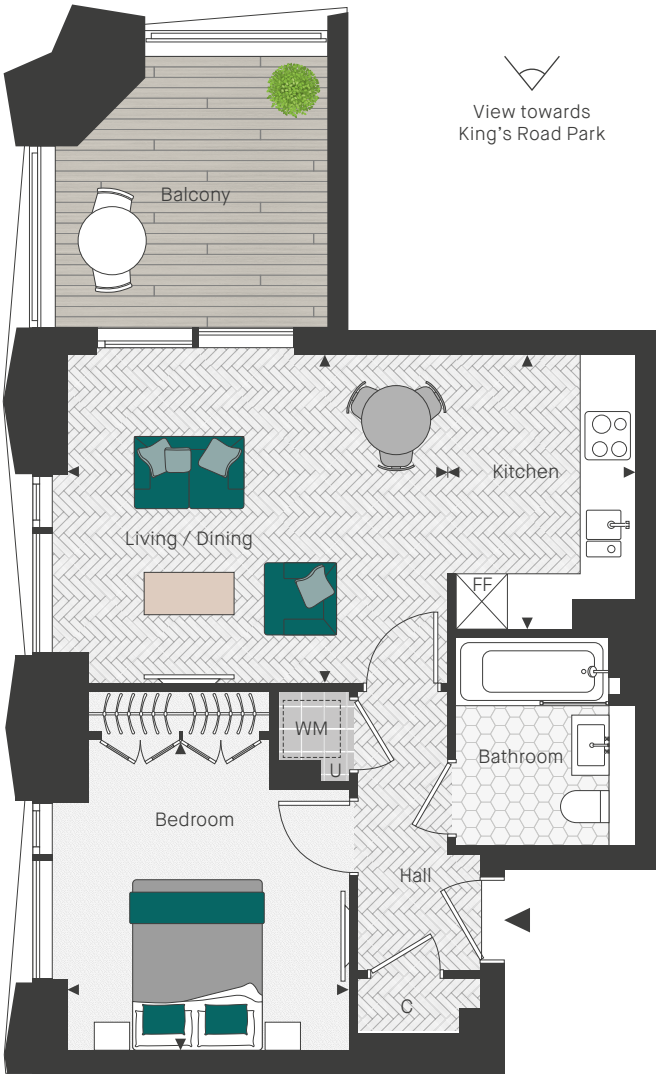
APARTMENTS 1130, 1137 & 1158
LEVELS 3, 4 & 7

NORTH



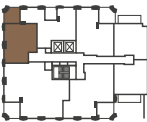
View towards
King's Road Park

View towards
Fulham

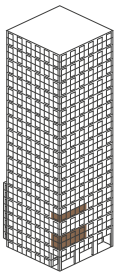


| | | |
|---------------------|---------------|-------------------|
| TOTAL INTERNAL AREA | 49.96 SQ M | 538 SQ FT |
| LIVING / DINING | 4.45M X 3.86M | 14' 7" X 12' 8" |
| KITCHEN | 2.20M X 3.21M | 7' 2" X 10' 7" |
| BEDROOM | 3.30M X 3.60M | 10' 10" X 11' 10" |
| BALCONY | 10.08 SQ M | 108 SQ FT |

LEVEL 3



ELEVATION
SOUTH WEST
NORTH WEST



Floor plans shown are approximate measurements only. Exact layout and size may vary. All measurements may vary within a tolerance of 5%. Please note, the furniture is not included. Please contact the Chelsea Creek Sales Team for further details.

1 BEDROOM

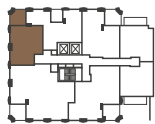
APARTMENT 1151
LEVEL 6

NORTH

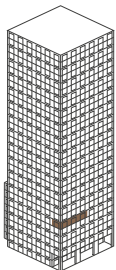


| | | |
|---------------------|---------------|-------------------|
| TOTAL INTERNAL AREA | 49.96 SQ M | 538 SQ FT |
| LIVING / DINING | 4.45M X 3.86M | 14' 7" X 12' 8" |
| KITCHEN | 2.20M X 3.21M | 7' 2" X 10' 7" |
| BEDROOM | 3.30M X 3.60M | 10' 10" X 11' 10" |
| BALCONY | 10.08 SQ M | 108 SQ FT |

LEVEL 6



ELEVATION
NORTH WEST
SOUTH WEST

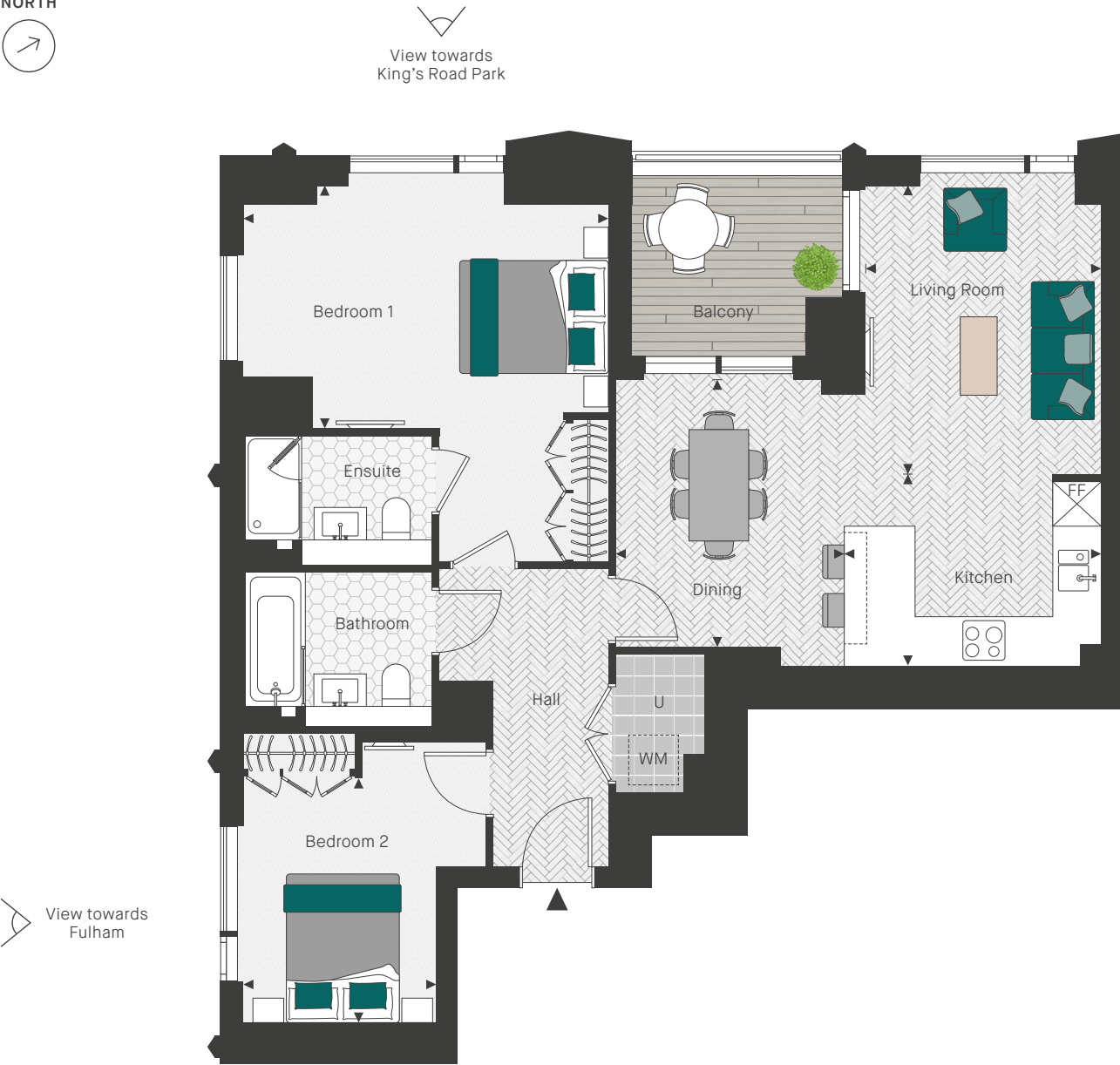


Washing machine Integrated fridge freezer 4 ring hob C Cupboard U Utility room TV PS Privacy screen

2 BEDROOM

APARTMENT 1117
LEVEL 1

NORTH

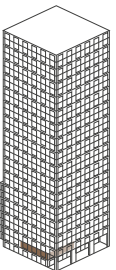


| | | |
|---------------------|---------------|-----------------|
| TOTAL INTERNAL AREA | 85.85 SQ M | 924 SQ FT |
| LIVING ROOM | 3.17M X 3.88M | 10' 5" X 12' 9" |
| DINING | 3.07M X 3.59M | 10' 1" X 11' 9" |
| KITCHEN | 3.45M X 2.57M | 11' 4" X 8' 5" |
| BEDROOM 1 | 4.91M X 3.27M | 16' 1" X 10' 9" |
| BEDROOM 2 | 2.60M X 3.28M | 8' 6" X 10' 9" |
| BALCONY | 7.04 SQ M | 76 SQ FT |

LEVEL 1



ELEVATION
NORTH WEST
SOUTH WEST



Floor plans shown are approximate measurements only. Exact layout and size may vary. All measurements may vary within a tolerance of 5%. Please note, the furniture is not included. Please contact the Chelsea Creek Sales Team for further details.

2 BEDROOM

APARTMENT 1121*
LEVEL 2

NORTH



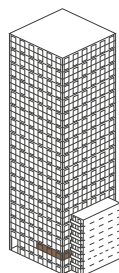
View towards
canal

| | | |
|---------------------|---------------|------------------|
| TOTAL INTERNAL AREA | 81.47 SQ M | 877 SQ FT |
| LIVING ROOM | 4.12M X 3.99M | 13' 6" X 13' 1" |
| KITCHEN / DINING | 3.18M X 3.32M | 10' 5" X 10' 11" |
| BEDROOM 1 | 3.65M X 3.39M | 12' 0" X 11' 1" |
| BEDROOM 2 | 3.36M X 3.90M | 11' 0" X 12' 9" |
| BALCONY | 11.06 SQ M | 119 SQ FT |

LEVEL 2



ELEVATION
SOUTH EAST
NORTH EAST



Washing machine

Integrated fridge freezer

4 ring hob

Cupboard

Utility room

TV

PS Privacy screen

*Apartment 1121 is wheelchair adaptable, please contact the Sales Team for more information.

2 BEDROOM

APARTMENT 1135
LEVEL 4

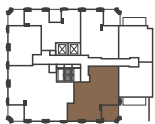
NORTH



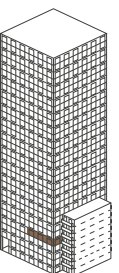
View towards
canal

| | | |
|---------------------|---------------|------------------|
| TOTAL INTERNAL AREA | 81.36 SQ M | 876 SQ FT |
| LIVING ROOM | 4.12M X 3.99M | 13' 6" X 13' 1" |
| KITCHEN / DINING | 3.18M X 3.32M | 10' 5" X 10' 11" |
| BEDROOM 1 | 3.65M X 3.39M | 12' 0" X 11' 1" |
| BEDROOM 2 | 3.36M X 3.90M | 11' 0" X 12' 9" |
| BALCONY | 11.01 SQ M | 118 SQ FT |

LEVEL 4



ELEVATION
SOUTH EAST
NORTH EAST



Floor plans shown are approximate measurements only. Exact layout and size may vary. All measurements may vary within a tolerance of 5%.
Please note, the furniture is not included. Please contact the Chelsea Creek Sales Team for further details.

2 BEDROOM

APARTMENTS 1142* & 1149*
LEVELS 5 & 6

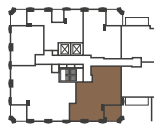
NORTH



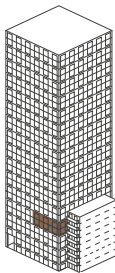
View towards
canal

| | | |
|---------------------|---------------|------------------|
| TOTAL INTERNAL AREA | 81.36 SQ M | 876 SQ FT |
| LIVING ROOM | 4.12M X 3.99M | 13' 6" X 13' 1" |
| KITCHEN / DINING | 3.18M X 3.32M | 10' 5" X 10' 11" |
| BEDROOM 1 | 3.65M X 3.39M | 12' 0" X 11' 1" |
| BEDROOM 2 | 3.36M X 3.90M | 11' 0" X 12' 9" |
| BALCONY | 11.01 SQ M | 118 SQ FT |

LEVEL 5



ELEVATION
SOUTH EAST
NORTH EAST



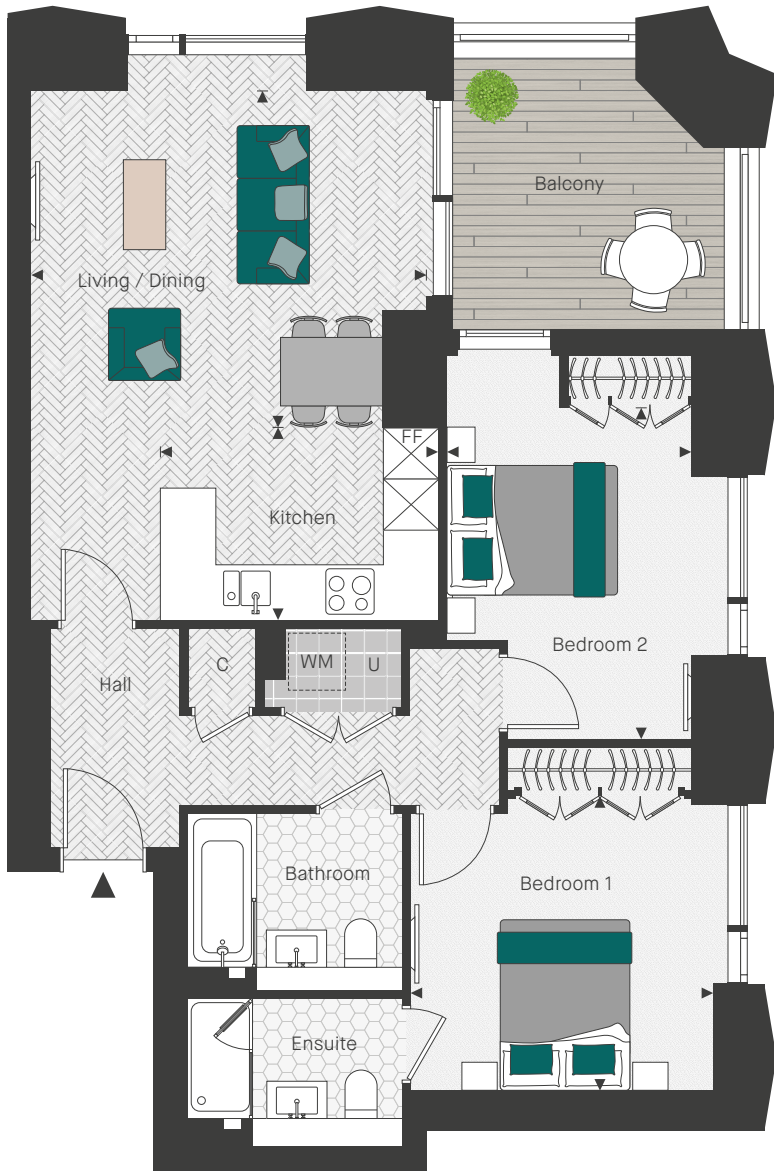
Washing machine Integrated fridge freezer 4 ring hob C Cupboard U Utility room TV PS Privacy screen P Pantry

*Apartments 1142 & 1149 are wheelchair adaptable, please contact the Sales Team for more information.

2 BEDROOM

APARTMENT 1160
LEVEL 8

NORTH



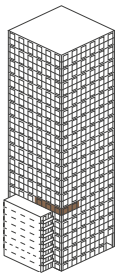
View towards
Kings Road Park

| | | |
|---------------------|---------------|------------------|
| TOTAL INTERNAL AREA | 79.42 SQ M | 855 SQ FT |
| LIVING / DINING | 4.63M X 3.94M | 15' 2" X 12' 11" |
| KITCHEN | 3.25M X 2.26M | 10' 8" X 7' 5" |
| BEDROOM 1 | 3.54M X 3.42M | 11' 7" X 11' 2" |
| BEDROOM 2 | 2.87M X 3.86M | 9' 5" X 12' 8" |
| BALCONY | 10.08 SQ M | 108 SQ FT |

LEVEL 8



ELEVATION
NORTH EAST
NORTH WEST

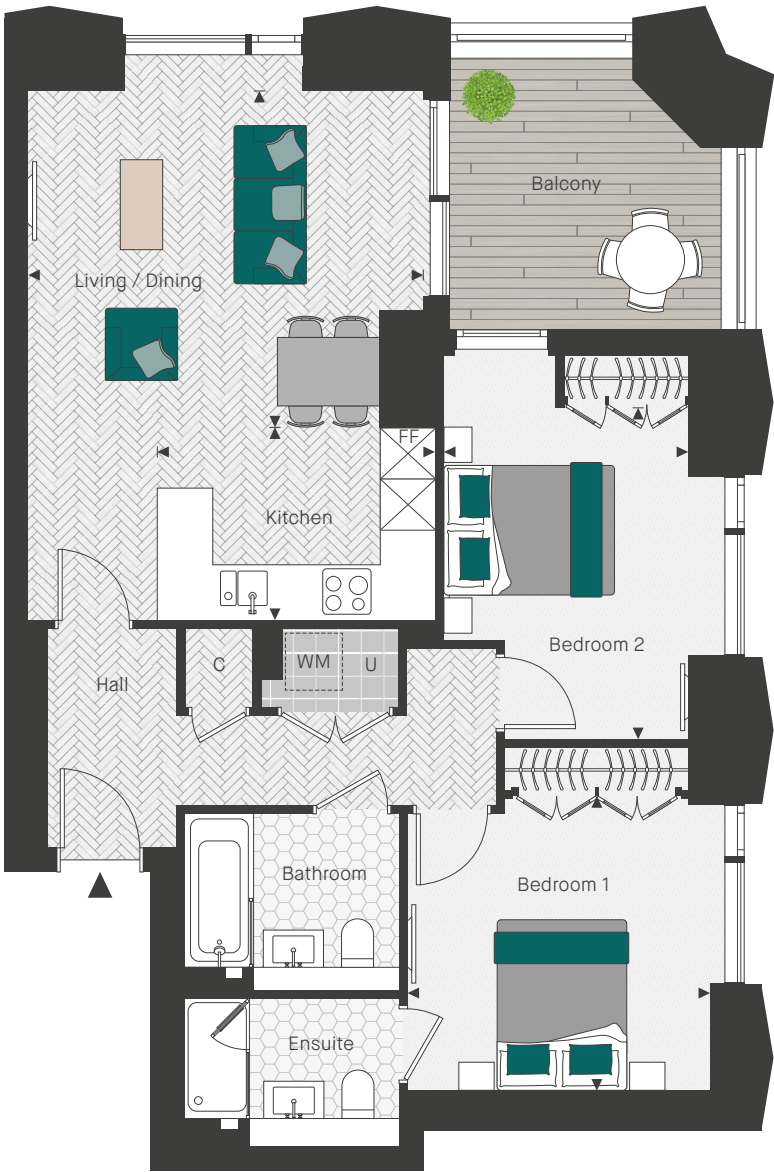


Floor plans shown are approximate measurements only. Exact layout and size may vary. All measurements may vary within a tolerance of 5%.
Please note, the furniture is not included. Please contact the Chelsea Creek Sales Team for further details.

2 BEDROOM

APARTMENT 1165
LEVEL 9

NORTH



View towards
King's Road Park

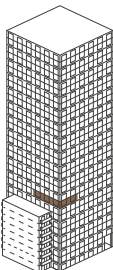
View towards
city

| | | |
|---------------------|---------------|------------------|
| TOTAL INTERNAL AREA | 79.42 SQ M | 855 SQ FT |
| LIVING / DINING | 4.63M X 3.94M | 15' 2" X 12' 11" |
| KITCHEN | 3.25M X 2.26M | 10' 8" X 7' 5" |
| BEDROOM 1 | 3.54M X 3.42M | 11' 7" X 11' 2" |
| BEDROOM 2 | 2.87M X 3.88M | 9' 5" X 12' 9" |
| BALCONY | 10.08 SQ M | 108 SQ FT |

LEVEL 9



ELEVATION
NORTH EAST
NORTH WEST



Washing machine Integrated fridge freezer 4 ring hob C Cupboard U Utility room TV PS Privacy screen

Floor plans shown are approximate measurements only. Exact layout and size may vary. All measurements may vary within a tolerance of 5%. Please note, the furniture is not included. Please contact the Chelsea Creek Sales Team for further details.



Photography is of the Showhome and is indicative only.

APARTMENT SPECIFICATION



LIGHTING & ELECTRICAL

- Down lighters to all rooms
- Lighting to balconies
- Feature wall lights to ensuite and bathrooms
- Bronze effect light switches
- Brushed brass effect sockets to kitchen
- White plastic sockets elsewhere
- TV provision to living room and bedrooms
- BT Fibre optic and Hyperoptic broadband to hall cupboard with LAN connections to living room and bedrooms
- Electrical underfloor heating to bathrooms and ensuites
- Brass effect heated towel rail in ensuites and bathroom
- Philips Hue lighting to living rooms, kitchens (including under counter lighting) and bedrooms (excluding ensuites and wardrobes). Amazon Echo Dot supplied.

SECURITY & EXTERNAL

- Multi-point high security door locking system to entrance door with spy hole
- 24-hour concierge ⁹
- CCTV security system to carpark, entrance lobby and development ¹⁰
- Video entry phone system connected to front entrance door panel and concierge
- Smoke detection and sprinkler systems to apartments

RESIDENTS’ FACILITIES

- Exclusive access to The Spa with swimming pool, sauna, steam room, treatment room, gymnasium and the Residents’ Lounge ¹¹
- Landscaped park, waterways and dockside piazza ¹²
- Interior designed entrance lobbies and corridors ¹³
- Residents’ home cinema room ¹⁴

1. The comfort cooling system is designed to provide an ambient temperature within the apartment for the majority of external temperatures. This may not be achieved in extreme temperature conditions

2. Apart from Manhattan apartments which have engineered herringbone timber flooring to bedrooms

3. One drawer pack provided in each bedroom. Location dependant on each apartment layout

4. Not applicable to Manhattan apartments

5. Three bedroom homes only

6. Washer / dryer located in hallway cupboard

7. Subject to kitchen layout

8. Marble is a natural product and is therefore subject to natural variation

9. Payable via the service charge

10. Payable via the service charge. Phased in over the course of the development

11. Membership of The Spa is payable via the service charge. Additional charges may be payable for select services

12. Maintenance payable via the service charge to be phased in over the course of the development

13. Maintenance payable via the service charge

14. Payable via the service charge

GENERAL SPECIFICATION

- Comfort cooling to living room and bedroom ¹
- Aluminium powder-coated external doors and windows
- Engineered herringbone timber flooring to living room, kitchen and hallway
- Carpet to bedrooms ²
- Fitted wardrobes with drawer pack ³
- Painted and fluted glass wardrobe doors
- Feature painted skirting and architraves
- Painted internal doors with feature routing detail
- Glass doors to living rooms ⁴
- Coved coffer to dining area ⁵
- Coved coffer to Duplex living areas
- Bronze effect ironmongery
- Balcony
- 10-year warranty from date of legal completion
- 999-year lease from 1st June 2010

KITCHENS

- Fully integrated kitchen
- Composite stone worktop and splashback
- Contemporary shaker style painted kitchen doors
- Brushed brass effect door handles
- Stainless steel recessed sink
- Integrated Miele electronic oven
- Integrated Miele induction hob
- Integrated extractor fan (re-circulating)
- Integrated Miele microwave
- Integrated Miele fridge / freezer
- Integrated Miele dishwasher
- Deck-mounted mixer tap in brushed brass finish
- Washer / dryer ⁶
- Feature lighting below high level cupboards
- Integrated wine cooler
- Feature glass display unit at high level ⁷
- Fitted pantry with lit glass shelving where located on plan

BATHROOMS & ENSUITES

- Brass effect mirrored vanity units
- Feature tiles to vanity wall
- Feature deck-mounted basin
- Brass effect taps and accessories
- Brass effect overhead shower and handheld shower in shower enclosure
- Brass effect framed glass shower and bath screen / enclosure
- Marble wall and floor tiles ⁸
- Wall mounted WC

Your attention is drawn to the fact that in rare circumstances it may not be possible to obtain the exact products or materials referred to in the specification. Chelsea Creek reserves the right to alter, amend or update the specification, which may include changes in the colour, material and/or brand specified. In such cases, a similar alternative will be provided. Chelsea Creek reserves the right to make these changes as required. A number of choices and options are available to personalise your home. Choices and options are subject to timeframes, availability and change. Photography is indicative only and subject to change.