

WELCOME TO WESTWOOD HOUSE AT
CHELSEA CREEK, A PRESTIGIOUS LONDON
ADDRESS, JUST MOMENTS FROM THE
KING'S ROAD AND THE RIVER THAMES.
WESTWOOD HOUSE OFFERS BEAUTIFULLY
DESIGNED HOMES SET WITHIN
AN ESTABLISHED TRANQUIL
WATERSIDE SETTING.



HARRODS

HYDE PARK

KING'S ROAD

DUKE OF YORK
SQUARE

SLOANE
SQUARE

THE CITY

BATTERSEA
BRIDGE

THE
IMPERIAL

WESTWOOD
HOUSE

CHELSEA
CREEK

CANARY
WHARF

BATTERSEA
PARK

CHELSEA
HARBOUR

IMPERIAL
WHARF
STATION

RIVER
THAMES

WESTWOOD HOUSE

WELCOME TO *WESTWOOD HOUSE*

Bright, contemporary apartments
that overlook restful canal waterways
and tree-lined promenades offer a
refreshingly distinctive urban lifestyle.



Computer Generated Image, indicative only

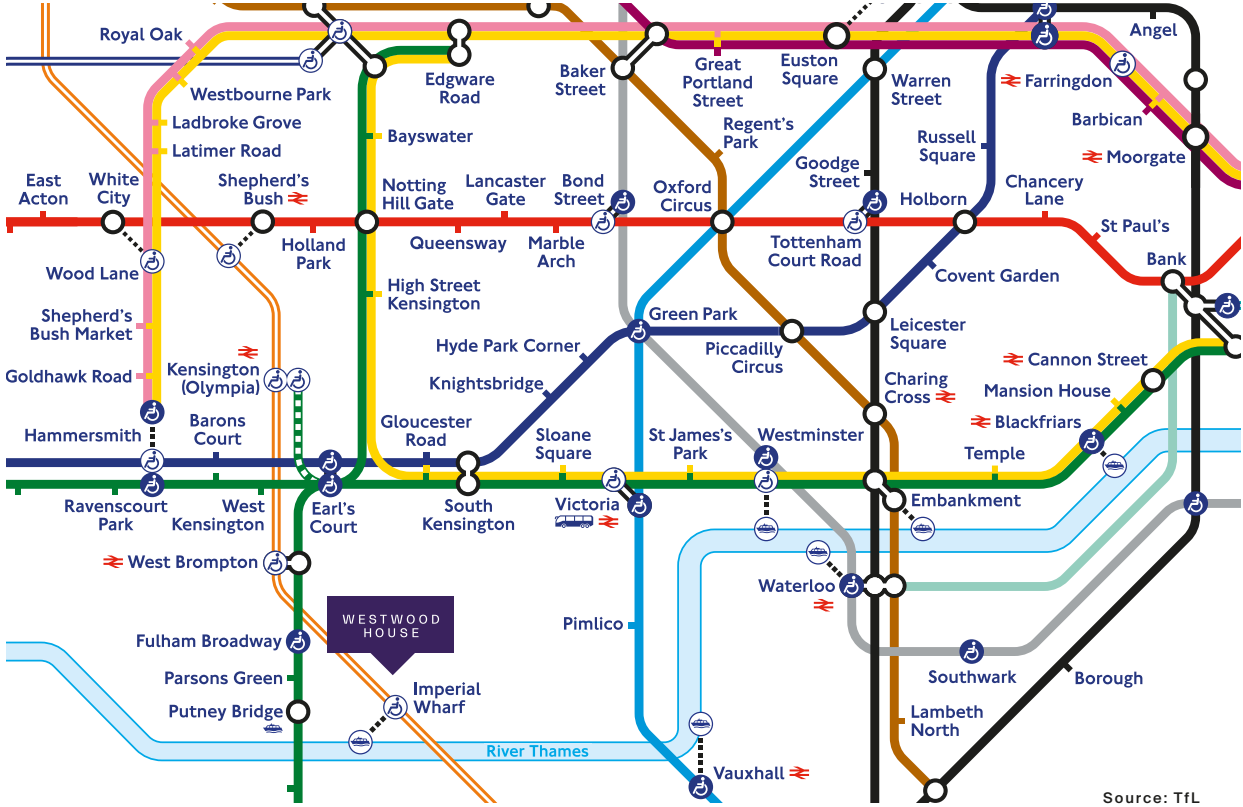
THE VISION

Chelsea Creek brings a characteristically European style of waterside living to Central London. Award-winning architectural practice Squire and Partners looked to the waterways of Amsterdam and Copenhagen for inspiration.



A serene waterside setting linking the River Thames from Imperial Wharf through to the neighbouring King's Road Park – a development by St William, a part of the Berkeley Group.





WALKING



- Imperial Wharf
- Chelsea Harbour
- King's Road
- Fulham Broadway
- Hurlingham Club
- Battersea Park
- South Kensington
- Saatchi Gallery
- Sloane Square
- Design Museum

DRIVING



- Sloane Square
- Chelsea & Westminster Hospital
- Knightsbridge
- Westfield
- Hyde Park
- Park Lane
- Oxford Street
- King's Cross
- Heathrow Airport
- Gatwick Airport
- London City Airport
- Luton Airport
- Stansted Airport

PUBLIC TRANSPORT*



- West Brompton
- Clapham Junction
- Kensington (Olympia)
- Shepherd's Bush
- Victoria
- High Street Kensington
- Bond Street
- Oxford Circus
- Imperial College
- Gatwick Airport
- Heathrow Airport

LONDON HELIPORT



Located within easy reach, London Heliport is open daily from 7am until 10.30pm. Extended operating hours are available by prior appointment.

RIVER TAXI

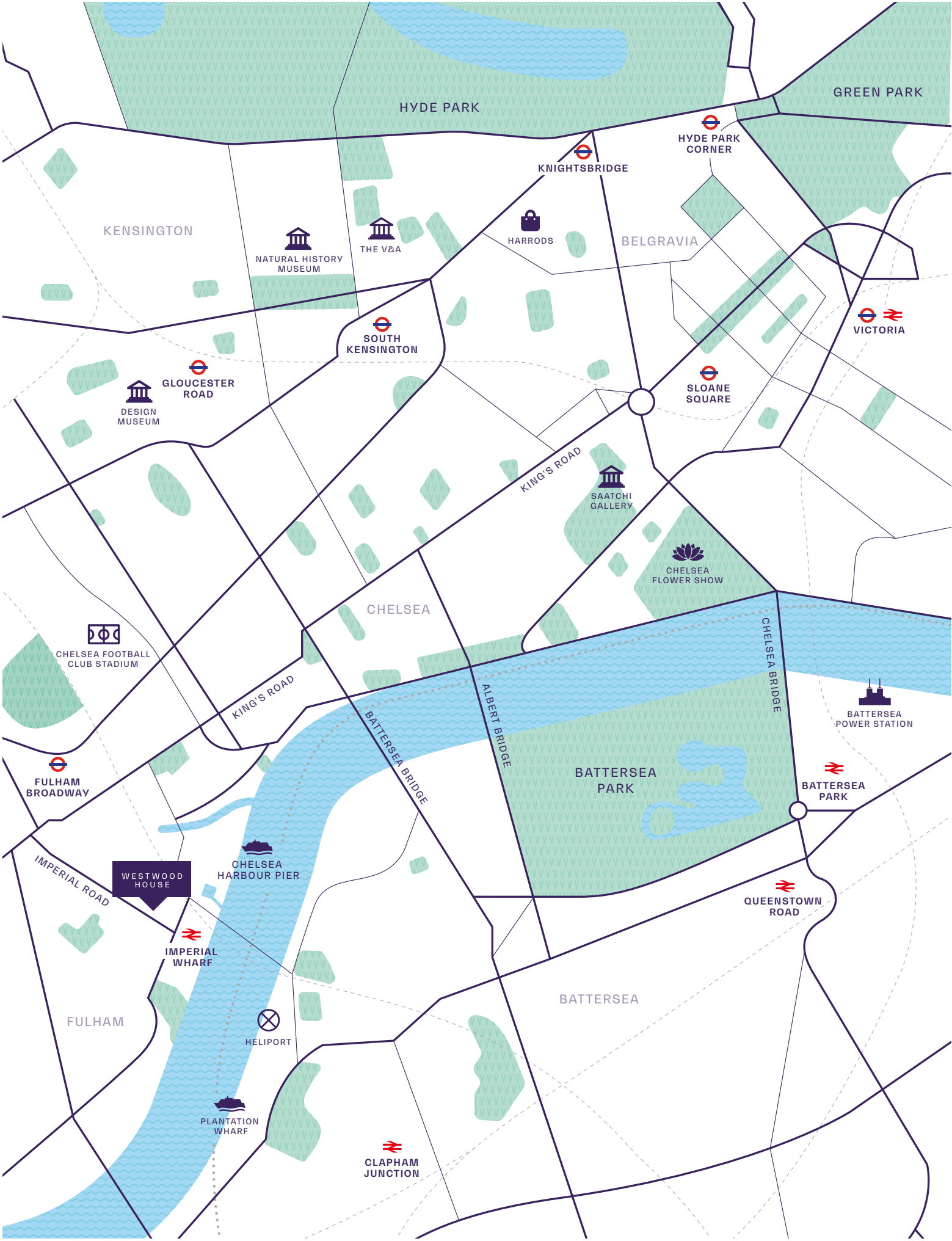


Fast, frequent and exhilarating, the river taxi is a popular choice for hopping to and from Chelsea Harbour, from right outside Imperial Wharf to Blackfriars, Putney and other favourite spots. The service runs Monday to Friday from 6.30am.

CYCLING

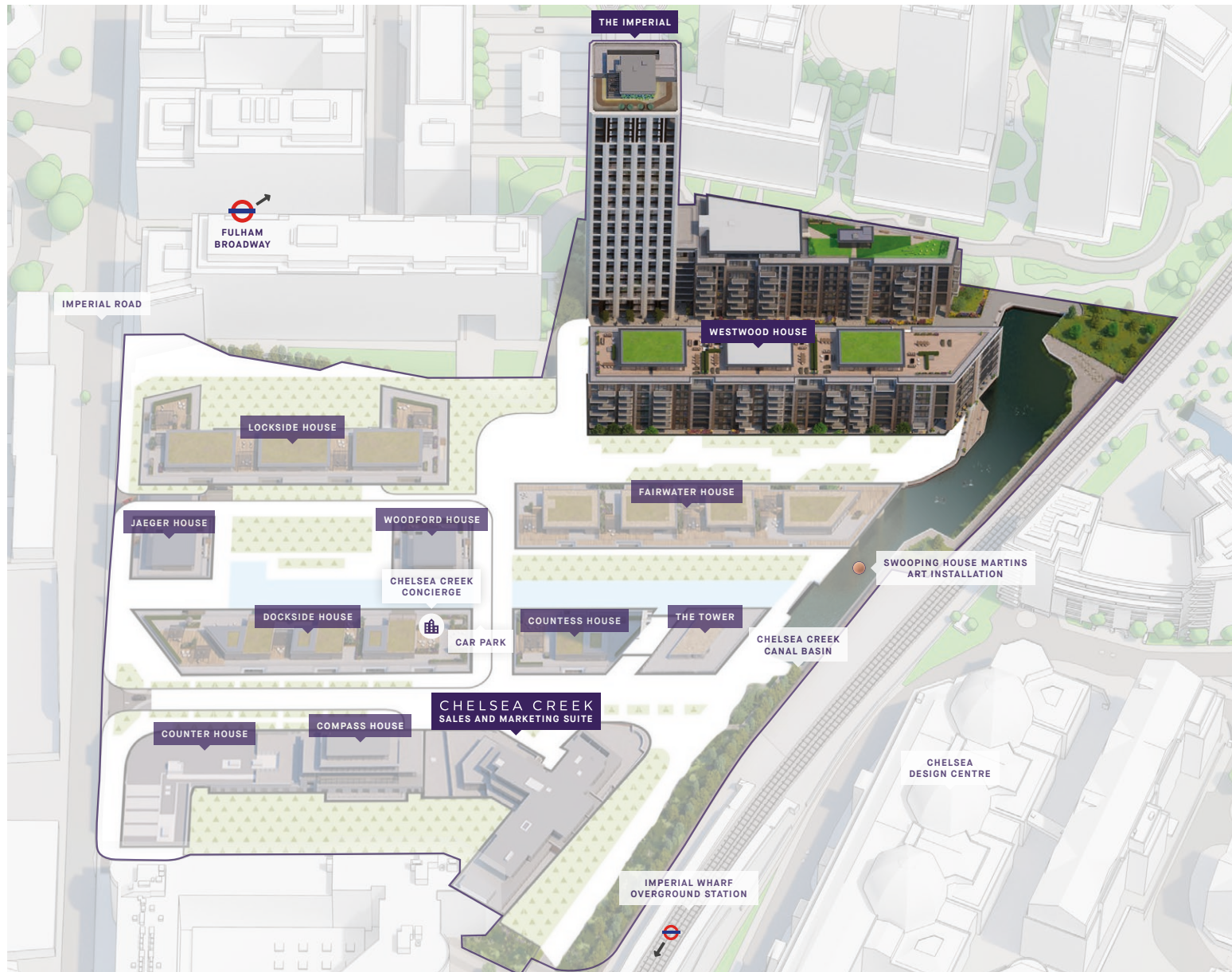


- Fulham Broadway
- Parsons Green
- South Kensington
- Sloane Square
- Harrods
- Hyde Park
- White City
- Oxford Circus



Maps are not to scale and show approximate locations only

Timings are approximate, correct at time of print and do not include walking/transfer times. Source: www.googlemaps.co.uk



THE *COLLECTIONS*

THE CLARIDGE'S AND THE SAVOY COLLECTIONS ARE TWO CAREFULLY CURATED PALETTES PROVIDING ENVIABLE LUXURY INTERIORS TO CHOOSE FROM. BOTH COLLECTIONS HAVE A MODERN NEOCLASSICAL DESIGN INSPIRED BY THE ART DECO ERA.

THE CLARIDGE'S COLLECTION

MODERN, BOLD AND ELEGANT



KITCHEN

Elegant green and light grey cabinetry created in a shaker-style neatly surrounds the high-specification integrated appliances whilst composite worktops and frosted-glass backsplash combine to provide a stylish yet functional kitchen space.



BATHROOM

Dramatic deep blue wall tiles contrasted with white hexagonal floor tiles bring an ambience to this sultry and sleek bathroom. Finished with feature wall lights and stylish brass fittings, this creates a contemporary, soft and soothing atmosphere.

THE SAVOY COLLECTION

CLASSIC-CONTEMPORARY AND SUBTLY CONFIDENT



KITCHEN

Bronze and light grey modern shaker-style doors accentuated sympathetically with bronzed ironmongery combine with light composite stone worktops to provide a warm and chic aesthetic.



BATHROOM

3D-textured wall tiles sit naturally amongst brass accents and art deco style wall lights. The marble-effect porcelain tiles juxtaposed against black hexagonal floor tiles exude elegance and sophistication providing a serene and calming atmosphere.



INTERIOR PHOTOGRAPHY OF THE SHOWHOME LIVING ROOM. LIFESTYLE IMAGES ARE INDICATIVE ONLY.



2 BEDROOM APARTMENTS

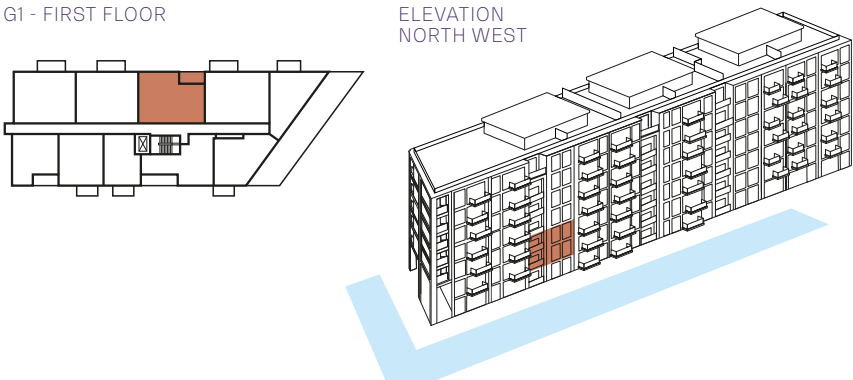
2 BEDROOM APARTMENT

FIRST AND SECOND FLOORS
APARTMENTS 975, 985



G1 - FIRST FLOOR

ELEVATION
NORTH WEST



TOTAL INTERNAL AREA	76.21 SQ M	820 SQ FT
LIVING / DINING	4.45M X 3.55M	14' 7" X 11' 8"
KITCHEN	3.50M X 2.41M	11' 6" X 7' 11"
BEDROOM 1	3.04M X 5.31M	10' 0" X 17' 5"
BEDROOM 2	2.92M X 4.17M	9' 7" X 13' 8"
BALCONY	7.58 SQ M	82 SQ FT

Washing machine Integrated fridge freezer 4 ring hob C Cupboard U Utility room TV PS Privacy screen

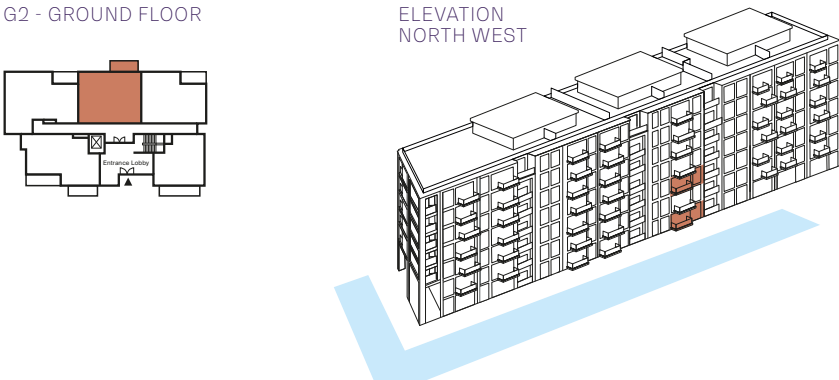
2 BEDROOM APARTMENT

GROUND AND SECOND FLOORS
APARTMENTS 1032 & 1043



G2 - GROUND FLOOR

ELEVATION
NORTH WEST



TOTAL INTERNAL AREA	78.58 SQ M	846 SQ FT
LIVING / DINING	3.65M X 5.56M	12' 0" X 18' 3"
KITCHEN	3.38M X 2.35M	11' 1" X 7' 9"
BEDROOM 1	3.22M X 5.31M	10' 7" X 17' 5"
BEDROOM 2	2.75M X 3.47M	9' 0" X 11' 5"
BALCONY	6.66 SQ M	72 SQ FT

Washing machine Integrated fridge freezer 4 ring hob C Cupboard U Utility room TV PS Privacy screen

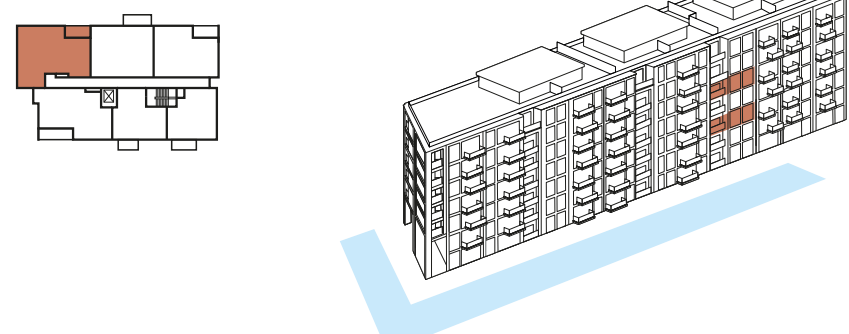
2 BEDROOM APARTMENT

SECOND AND FOURTH FLOORS
APARTMENTS 1042 AND 1054



G2 - SECOND FLOOR

ELEVATION
NORTH WEST



TOTAL INTERNAL AREA	89.20 SQ M	960 SQ FT
LIVING / DINING	5.49M X 3.75M	18' 0" X 12' 3"
KITCHEN	3.45M X 2.22M	11' 4" X 7' 3"
BEDROOM 1	3.28M X 4.25M	10' 9" X 13' 11"
BEDROOM 2	3.43M X 4.53M	11' 3" X 14' 10"
BALCONY	7.04 SQ M	76 SQ FT

Washing machine Integrated fridge freezer 4 ring hob C Cupboard U Utility room TV PS Privacy screen

Apartment layouts provide approximate measurements and are indicative only. Dimensions, which are taken from the indicated points of measurement are for guidance only and are not intended to be used for carpet sizes, appliance space or items of furniture. Apartment areas are provided as gross internal areas under the RICS measuring practice. All measurements and areas may vary within a tolerance of 5%. Kitchen layouts are indicative only and are subject to change. Internal wardrobe layouts are indicative only and are subject to change. Services boxing size and location may vary. All balcony/terrace dimensions and areas are approximate and may vary within a tolerance of 10% subject to detailed design. View points are indicative only. Floorplans have been scaled individually to fit the page.

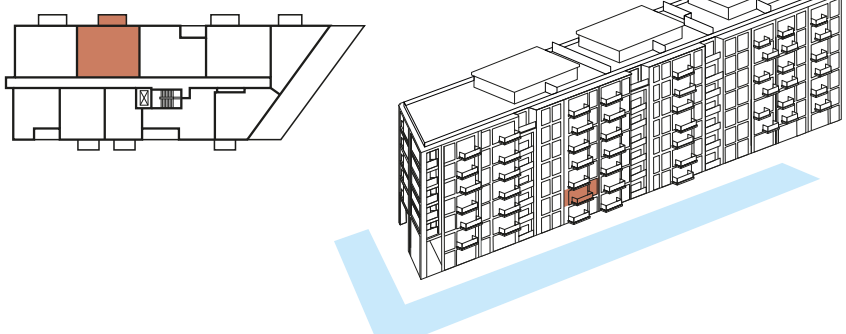
2 BEDROOM APARTMENT

FIRST FLOOR
APARTMENT 974



G1 - FIRST FLOOR

ELEVATION
NORTH WEST



TOTAL INTERNAL AREA	78.40 SQ M	844 SQ FT
LIVING / DINING	3.65M X 5.75M	12' 0" X 18' 10"
KITCHEN	3.38M X 2.16M	11' 1" X 7' 1"
BEDROOM 1	3.16M X 5.26M	10' 4" X 17' 3"
BEDROOM 2	2.82M X 4.12M	9' 3" X 13' 6"
BALCONY	6.83 SQ M	74 SQ FT

Washing machine Integrated fridge freezer 4 ring hob C Cupboard U Utility room TV PS Privacy screen

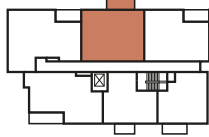
Apartment layouts provide approximate measurements and are indicative only. Dimensions, which are taken from the indicated points of measurement are for guidance only and are not intended to be used for carpet sizes, appliance space or items of furniture. Apartment areas are provided as gross internal areas under the RICS measuring practice. All measurements and areas may vary within a tolerance of 5%. Kitchen layouts are indicative only and are subject to change. Internal wardrobe layouts are indicative only and are subject to change. Services boxing size and location may vary. All balcony/terrace dimensions and areas are approximate and may vary within a tolerance of 10% subject to detailed design. View points are indicative only. Floorplans have been scaled individually to fit the page.

2 BEDROOM APARTMENT

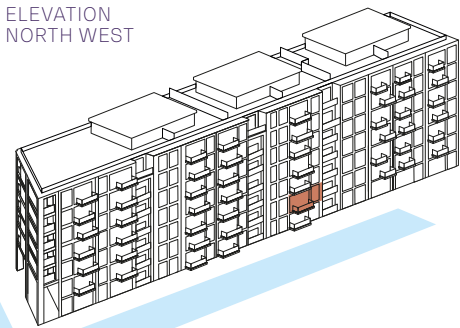
FIRST FLOOR
APARTMENT 1037



G2 - FIRST FLOOR



ELEVATION
NORTH WEST



TOTAL INTERNAL AREA	78.58 SQ M	846 SQ FT
LIVING / DINING	3.65M X 5.56M	12' 0" X 18' 3"
KITCHEN	3.38M X 2.35M	11' 1" X 7' 9"
BEDROOM 1	3.22M X 5.31M	10' 7" X 17' 5"
BEDROOM 2	2.75M X 4.07M	9' 0" X 13' 4"
BALCONY	6.83 SQ M	74 SQ FT

Washing machine Integrated fridge freezer 4 ring hob C Cupboard U Utility room TV PS Privacy screen

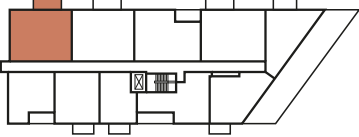
Apartment layouts provide approximate measurements and are indicative only. Dimensions, which are taken from the indicated points of measurement are for guidance only and are not intended to be used for carpet sizes, appliance space or items of furniture. Apartment areas are provided as gross internal areas under the RICS measuring practice. All measurements and areas may vary within a tolerance of 5%. Kitchen layouts are indicative only and are subject to change. Internal wardrobe layouts are indicative only and are subject to change. Services boxing size and location may vary. All balcony/terrace dimensions and areas are approximate and may vary within a tolerance of 10% subject to detailed design. View points are indicative only. Floorplans have been scaled individually to fit the page.

2 BEDROOM APARTMENT

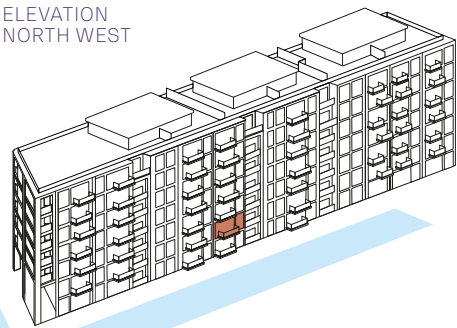
FIRST FLOOR
APARTMENT 973



G1 - FIRST FLOOR



ELEVATION
NORTH WEST



TOTAL INTERNAL AREA	78.77 SQ M	848 SQ FT
LIVING / DINING	3.66M X 5.31M	12' 0" X 17' 5"
KITCHEN	3.38M X 2.60M	11' 1" X 8' 6"
BEDROOM 1	3.16M X 5.31M	10' 4" X 17' 5"
BEDROOM 2	2.84M X 4.15M	9' 4" X 13' 7"
BALCONY	6.83 SQ M	74 SQ FT

Washing machine Integrated fridge freezer 4 ring hob C Cupboard U Utility room TV PS Privacy screen

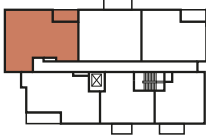
Apartment layouts provide approximate measurements and are indicative only. Dimensions, which are taken from the indicated points of measurement are for guidance only and are not intended to be used for carpet sizes, appliance space or items of furniture. Apartment areas are provided as gross internal areas under the RICS measuring practice. All measurements and areas may vary within a tolerance of 5%. Kitchen layouts are indicative only and are subject to change. Internal wardrobe layouts are indicative only and are subject to change. Services boxing size and location may vary. All balcony/terrace dimensions and areas are approximate and may vary within a tolerance of 10% subject to detailed design. View points are indicative only. Floorplans have been scaled individually to fit the page.

2 BEDROOM APARTMENT

FIRST FLOOR
APARTMENT 1036



G2 - FIRST FLOOR



ELEVATION
NORTH WEST



TOTAL INTERNAL AREA	89.20 SQ M	960 SQ FT
LIVING / DINING	5.49M X 3.75M	18' 0" X 12' 3"
KITCHEN	3.45M X 2.22M	11' 4" X 7' 3"
BEDROOM 1	3.28M X 4.25M	10' 9" X 13' 11"
BEDROOM 2	3.43M X 4.53M	11' 3" X 14' 10"
BALCONY	7.04 SQ M	76 SQ FT

Washing machine Integrated fridge freezer 4 ring hob C Cupboard U Utility room TV PS Privacy screen

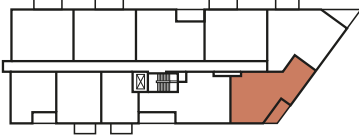
Apartment layouts provide approximate measurements and are indicative only. Dimensions, which are taken from the indicated points of measurement are for guidance only and are not intended to be used for carpet sizes, appliance space or items of furniture. Apartment areas are provided as gross internal areas under the RICS measuring practice. All measurements and areas may vary within a tolerance of 5%. Kitchen layouts are indicative only and are subject to change. Internal wardrobe layouts are indicative only and are subject to change. Services boxing size and location may vary. All balcony/terrace dimensions and areas are approximate and may vary within a tolerance of 10% subject to detailed design. View points are indicative only. Floorplans have been scaled individually to fit the page.

2 BEDROOM APARTMENT

THIRD FLOOR
APARTMENT 998



G1 - THIRD FLOOR



ELEVATION
SOUTH EAST



TOTAL INTERNAL AREA	80.29 SQ M	864 SQ FT
LIVING / DINING	3.78M X 7.46M	12' 5" X 24' 6"
KITCHEN	3.09M X 2.92M	10' 2" X 9' 7"
BEDROOM 1	3.71M X 3.35M	12' 2" X 11' 0"
BEDROOM 2	3.11M X 3.50M	10' 2" X 11' 6"
BALCONY	6.09 SQ M	66 SQ FT

Washing machine Integrated fridge freezer 4 ring hob C Cupboard U Utility room TV PS Privacy screen

Apartment layouts provide approximate measurements and are indicative only. Dimensions, which are taken from the indicated points of measurement are for guidance only and are not intended to be used for carpet sizes, appliance space or items of furniture. Apartment areas are provided as gross internal areas under the RICS measuring practice. All measurements and areas may vary within a tolerance of 5%. Kitchen layouts are indicative only and are subject to change. Internal wardrobe layouts are indicative only and are subject to change. Services boxing size and location may vary. All balcony/terrace dimensions and areas are approximate and may vary within a tolerance of 10% subject to detailed design. View points are indicative only. Floorplans have been scaled individually to fit the page.

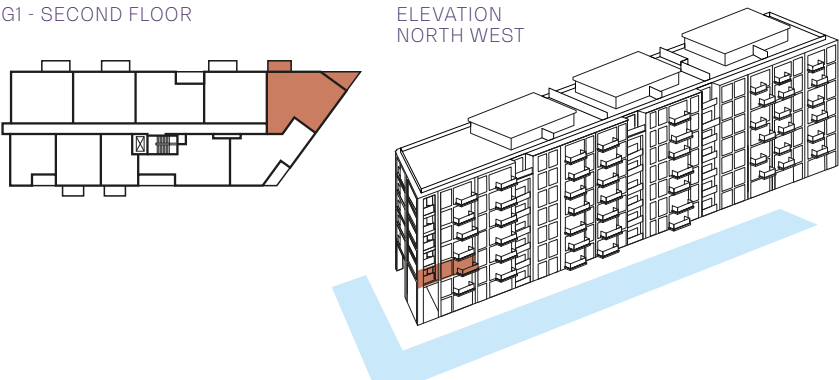
2 BEDROOM APARTMENT

SECOND FLOOR
APARTMENT 987



G1 - SECOND FLOOR

ELEVATION
NORTH WEST



TOTAL INTERNAL AREA	88.90 SQ M	957 SQ FT
LIVING / DINING	2.74M X 6.21M	9' 0" X 20' 4"
KITCHEN	2.81M X 3.60M	9' 2" X 11' 10"
BEDROOM 1	3.00M X 5.35M	9' 10" X 17' 6"
BEDROOM 2	3.35M X 3.91M	11' 0" X 12' 10"
BALCONY	12.39 SQ M	133 SQ FT

Washing machine Integrated fridge freezer 4 ring hob C Cupboard U Utility room TV PS Privacy screen

Apartment layouts provide approximate measurements and are indicative only. Dimensions, which are taken from the indicated points of measurement are for guidance only and are not intended to be used for carpet sizes, appliance space or items of furniture. Apartment areas are provided as gross internal areas under the RICS measuring practice. All measurements and areas may vary within a tolerance of 5%. Kitchen layouts are indicative only and are subject to change. Internal wardrobe layouts are indicative only and are subject to change. Services boxing size and location may vary. All balcony/terrace dimensions and areas are approximate and may vary within a tolerance of 10% subject to detailed design. View points are indicative only. Floorplans have been scaled individually to fit the page.

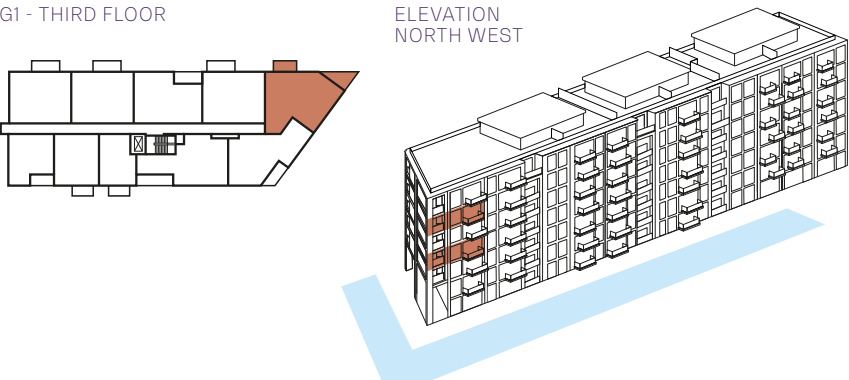
2 BEDROOM APARTMENT

THIRD AND FIFTH FLOORS
APARTMENTS 997 & 1017



G1 - THIRD FLOOR

ELEVATION
NORTH WEST



TOTAL INTERNAL AREA	88.89 SQ M	957 SQ FT
LIVING / DINING	2.75M X 6.21M	9' 0" X 20' 4"
KITCHEN	2.80M X 3.60M	9' 2" X 11' 10"
BEDROOM 1	3.00M X 5.35M	9' 10" X 17' 6"
BEDROOM 2	3.35M X 3.91M	11' 0" X 12' 10"
BALCONY	12.39 SQ M	133 SQ FT

Washing machine Integrated fridge freezer 4 ring hob C Cupboard U Utility room TV PS Privacy screen

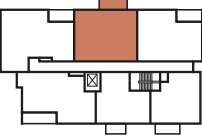
Apartment layouts provide approximate measurements and are indicative only. Dimensions, which are taken from the indicated points of measurement are for guidance only and are not intended to be used for carpet sizes, appliance space or items of furniture. Apartment areas are provided as gross internal areas under the RICS measuring practice. All measurements and areas may vary within a tolerance of 5%. Kitchen layouts are indicative only and are subject to change. Internal wardrobe layouts are indicative only and are subject to change. Services boxing size and location may vary. All balcony/terrace dimensions and areas are approximate and may vary within a tolerance of 10% subject to detailed design. View points are indicative only. Floorplans have been scaled individually to fit the page.

2 BEDROOM APARTMENT

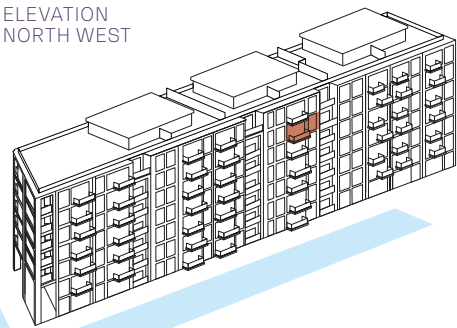
FIFTH FLOOR
APARTMENT 1061



G2 - FIFTH FLOOR



ELEVATION
NORTH WEST



TOTAL INTERNAL AREA	77.23 SQ M	831 SQ FT
LIVING / DINING	3.38M X 5.56M	11' 1" X 18' 3"
KITCHEN	3.38M X 2.35M	11' 1" X 7' 9"
BEDROOM 1	2.77M X 5.31M	9' 1" X 17' 5"
BEDROOM 2	2.74M X 3.47M	9' 0" X 11' 5"
BALCONY	6.83 SQ M	74 SQ FT

Washing machine Integrated fridge freezer 4 ring hob C Cupboard U Utility room TV PS Privacy screen

Apartment layouts provide approximate measurements and are indicative only. Dimensions, which are taken from the indicated points of measurement are for guidance only and are not intended to be used for carpet sizes, appliance space or items of furniture. Apartment areas are provided as gross internal areas under the RICS measuring practice. All measurements and areas may vary within a tolerance of 5%. Kitchen layouts are indicative only and are subject to change. Internal wardrobe layouts are indicative only and are subject to change. Services boxing size and location may vary. All balcony/terrace dimensions and areas are approximate and may vary within a tolerance of 10% subject to detailed design. View points are indicative only. Floorplans have been scaled individually to fit the page.

2 BEDROOM APARTMENT

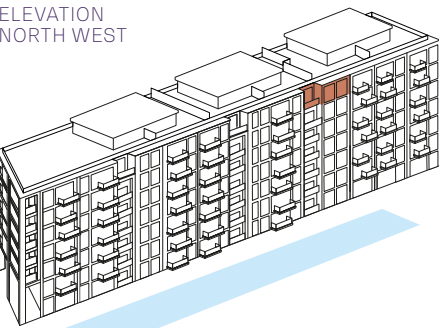
SIXTH FLOOR
APARTMENT 1066



G2 - SIXTH FLOOR



ELEVATION
NORTH WEST



TOTAL INTERNAL AREA	72.58 SQ M	781 SQ FT
LIVING / DINING	5.15M X 3.22M	16' 11" X 10' 7"
KITCHEN	3.44M X 2.78M	11' 4" X 9' 1"
BEDROOM 1	2.75M X 3.63M	9' 0" X 11' 11"
BEDROOM 2	2.65M X 3.63M	8' 8" X 11' 11"
BALCONY	6.07 SQ M	65 SQ FT

Washing machine Integrated fridge freezer 4 ring hob C Cupboard U Utility room TV PS Privacy screen

Apartment layouts provide approximate measurements and are indicative only. Dimensions, which are taken from the indicated points of measurement are for guidance only and are not intended to be used for carpet sizes, appliance space or items of furniture. Apartment areas are provided as gross internal areas under the RICS measuring practice. All measurements and areas may vary within a tolerance of 5%. Kitchen layouts are indicative only and are subject to change. Internal wardrobe layouts are indicative only and are subject to change. Services boxing size and location may vary. All balcony/terrace dimensions and areas are approximate and may vary within a tolerance of 10% subject to detailed design. View points are indicative only. Floorplans have been scaled individually to fit the page.

STANDARD APARTMENT
SPECIFICATION



GENERAL SPECIFICATION

Comfort Cooling and warm air space heating to Living Room and Bedrooms¹
Aluminium powder coated external doors and windows
Engineered timber flooring to Living Room, Kitchen and Hallway
Carpet to Bedrooms²
Painted and fluted glass wardrobe doors
Feature painted skirting and architraves
Painted internal doors with feature routing detail
Bronze effect ironmongery
Balcony or Terrace
Ten year warranty from date of legal completion
999 year lease from 1 June 2010

KITCHEN

Fully integrated kitchen
Composite stone worktop
Frosted glass splashback
Modern shaker style painted kitchen doors
Bronze effect door handles
Stainless steel recessed sink
Integrated Miele electronic oven
Integrated Miele hob
Integrated extractor fan (re-circulating)
Integrated Miele microwave
Integrated Siemens fridge / freezer
Integrated Siemens dishwasher
Deck mounted mixer tap in black finish
Washer / dryer³
Feature lighting below high level cupboards
Integrated wine cooler
Feature utensil rail
Feature bronze effect shelving unit⁴

BATHROOM AND EN-SUITES

Bespoke brass effect mirrored vanity units
Feature tiles to vanity wall
Feature deck mounted basin
Brass effect taps & accessories
Brass effect overhead shower and hand held shower in shower enclosure
Brass effect framed glass shower and bath screen / enclosure
Porcelain floor and wall tiles
Wall mounted WC

ELECTRICAL

Down lighters to all rooms
Feature wall lights to En-Suite and Bathrooms
Bronze effect light switches
Bronze effect sockets to Kitchen
White plastic sockets elsewhere
TV provision to Living Room and Bedrooms
BT Fibre optic and Hyperoptic broadband to hall cupboard with LAN connections to Living Room and Bedroom 1
Electrical underfloor heating to Bathrooms and En-suites
Brass effect Heated towel rail in En-suites and Bathroom

SECURITY

Multi-point high security door locking system to entrance door with spy hole
24 hour concierge⁵
CCTV security system to car park, entrance lobby and development⁵
Video entry phone system connected to front entrance door panel and concierge
Smoke detection to all apartments and sprinkler system to certain apartments⁶

RESIDENT'S FACILITIES

Exclusive access to The Spa with swimming pool, sauna, steam room, treatment room, gymnasium and wi-fi enabled resident's lounge⁷
Landscaped park, waterways and dockside plaza⁸
Interior designed entrance lobbies and corridors⁹

1. The comfort cooling system is designed to provide an ambient temperature within the apartment for the majority of external temperatures. This may not be achieved in extreme temperature conditions. The same system that provides the comfort cooling also provides space heating.
2. Apart from Mannhattans.
3. Washer / dryer located in Hallway Cupboard.
4. Provision of feature shelving unit is subject to layouts and size may vary.
5. Payable via the service charge.
6. Sprinklers provided only to apartments with open plan and long travel distances.
7. Membership of The Spa is payable via the service charge. Additional charges may be payable for select services.
8. Maintenance payable via the service charge to be phased in over the course of the development.
9. Maintenance payable via the service charge.

Your attention is being drawn to the fact that in rare circumstances it may not be possible to obtain the exact products or materials referred to in the specification. Fulham Reach reserves the right to alter, amend or update the specification, which may include changes in the colour, material and/or brand specified. In such cases, a similar alternative will be provided. Fulham Reach reserves the right to make these changes as required.

A number of choices and options are available to personalise your home. Choices and options are subject to timeframes, availability and change.