



# 9 MILLBANK

WESTMINSTER SW1

MILLBANK  
RESIDENCES



# 9 MILLBANK

WESTMINSTER SW1

MILLBANK  
RESIDENCES



## The benchmark for waterside living

*Just a short stroll from Westminster Palace, Millbank Residences occupies a coveted riverside location with views over the Thames.*

Millbank Residences is a magnificent collection of Mannhattans, one, two, three and four-bedroom apartments and penthouses in a beautifully restored 1920s building that retains many of its original details.

Featuring classical interiors designed by Goddard Littlefair along with world-class leisure facilities, these elegant homes provide the ultimate in sophisticated London living.







Photograph of apartment balcony at Millbank Residences is indicative only





The impressive granite-and-stone façade of Millbank Residences is set back from the river behind Victoria Tower Gardens, a park that forms part of the Thames Embankment.

Computer-generated image is indicative only







Chapter 1

# LONDON LIVING, BEYOND COMPARE

To live in London is to live in one of the finest cities in the world. Chic shopping streets, internationally renowned arts and culture, award-winning restaurants and prestigious schools and universities all add up to create an enviable lifestyle that's unique to this incredible city.



# MILLBANK RESIDENCES



Computer-generated image is indicative only





### A cultural and culinary capital

Over the years, London has built up a reputation as one of the world's favourite destinations for food and culture. You are spoilt for choice with a diverse array of restaurants and cuisine to choose from. The Capital's outstanding museums, galleries and theatres rival those of any other capital city.





## Distinctive drinking and dining

*From Michelin-starred restaurants to elegant hotel bars, when it comes to food and drink, London is the envy of the world.*

For pre-dinner drinks try the Library Bar at The Ned, an intimate Champagne and martini bar mixing vintage-inspired signature cocktails. Head to The Cinnamon Club to sample London's most innovative Indian cooking, or for classic British cuisine visit The Dining Room at The Goring Hotel, a firm favourite with members of the Royal Family.



1 Library Bar at The Ned, London 2 The Cinnamon Club, Westminster 3 The Goring, Belgravia







## World-class culture on your doorstep

*London's galleries, museums and concert halls host ground-breaking exhibitions, stunning permanent collections and virtuoso performances from international stars.*

The Wallace Collection in Marylebone houses one of the nation's most impressive fine art collections from the 18th and 19th centuries, while fans of contemporary art will find exciting up-and-coming talent at the Saatchi Gallery in Chelsea.

Artists from all over the world take to the stage at Covent Garden's Royal Opera House in sell-out performances of opera and ballet.

1 'Champagne Life' ©Steve White, 2016 Image courtesy of Saatchi Gallery, London 2 Royal Opera House, Covent Garden 3 The Wallace Collection, Marylebone







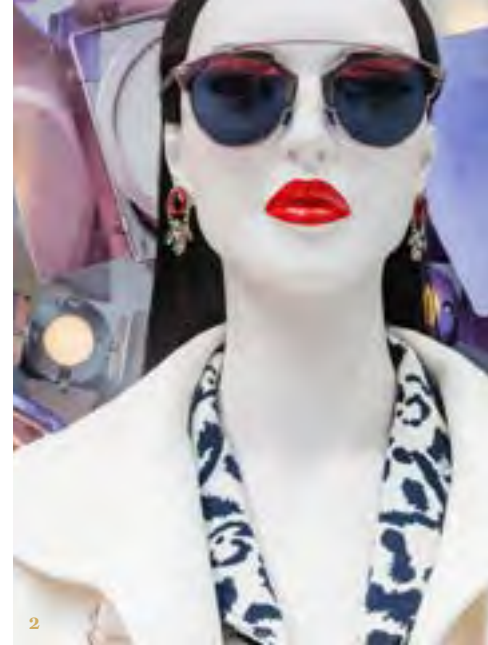
Photograph of Piccadilly Arcade in Central London

### **A history of unbeatable education and unrivalled shopping**

London's oldest and best universities were established in the 1820s and their students have been responsible for pioneering research and ground-breaking discoveries ever since. Many of the city's luxury stores go back even further – British favourite Fortnum & Mason opened on Piccadilly in 1707, while Lock & Co., the world's oldest hat store, dates all the way back to 1676.







1 Hilditch & Key, St James's 2 Dior, Bond Street 3 The Royal Arcade, Bond Street

## London's most select shopping destinations

*From the designer stores on New Bond Street to the bespoke shirt-makers of Jermyn Street, London leads the way when it comes to exclusive shopping.*

Head to the famous Harrods department store in Knightsbridge for seven floors of luxury goods, or to the shoe galleries at Selfridges for the most sought-after styles.

Iconic brands like Vivienne Westwood, Burberry and Stella McCartney, with their beautiful flagship stores, have created a uniquely British sense of style that's emulated around the world.







## Centuries old first-class education

*London provides students from around the globe with unmatched educational opportunities.*

University College London, Imperial College London and London School of Economics are consistently ranked among the world's leading universities, while the prestigious Westminster School has been turning out the nation's most acclaimed poets, performers, philosophers, and even several prime ministers, for more than 500 years.



1 Royal College of Music, Kensington 2 King's College London 3 Imperial College of Science, Technology and Medicine, London

### Distance

Chelsea College of Arts	0.4 miles
London South Bank University	1.1 miles
King's College London	1.4 miles
Royal Academy of Arts	1.5 miles
London School of Economics and Political Science	1.6 miles
Birkbeck, University of London	2.1 miles
University of London	2.2 miles
University College London (UCL)	2.3 miles
Royal College of Music	2.7 miles
Imperial College London	2.9 miles
Regent's University London	2.9 miles





## Global passage close at hand

*Millbank Residences is within easy reach of several tube stations, with fast connections to the rest of central London and beyond.*

Westminster Underground station is a 10-minute walk away and connects you to Bond Street in 4 minutes, South Kensington in 9 minutes and Heathrow Airport in 56 minutes.

St James's Park and Pimlico stations are less than 15 minutes' walk away, both of them one stop from Victoria Overground and Underground stations.

Covent Garden and Soho are within easy reach, just a 10 and 12 minute taxi ride away, respectively.



### Walk

Tate Britain	8 minutes
Chelsea College of Arts	8 minutes
Houses of Parliament	9 minutes
Westminster Station	10 minutes
St James's Park Station	13 minutes
London Eye	16 minutes
Victoria Station	20 minutes
Sloane Square	32 minutes
London School of Economics	34 minutes



### Tube\*

Green Park	1 minute
Waterloo	1 minute
Sloane Square	6 minutes
Piccadilly Circus	7 minutes
Oxford Circus	8 minutes
King's Cross	12 minutes
Liverpool Street	17 minutes
London City Airport	30 minutes
Gatwick Airport	53 minutes
Heathrow Airport	56 minutes



### Drive

Victoria Station	6 minutes
Battersea Park	10 minutes
King's Road	11 minutes
Harrods	14 minutes
Hyde Park	17 minutes
Imperial College London	21 minutes
Selfridges	23 minutes
Mayfair	21 minutes
London City Airport	40 minutes
Heathrow Airport	50 minutes
Gatwick Airport	1 hours 20 minutes

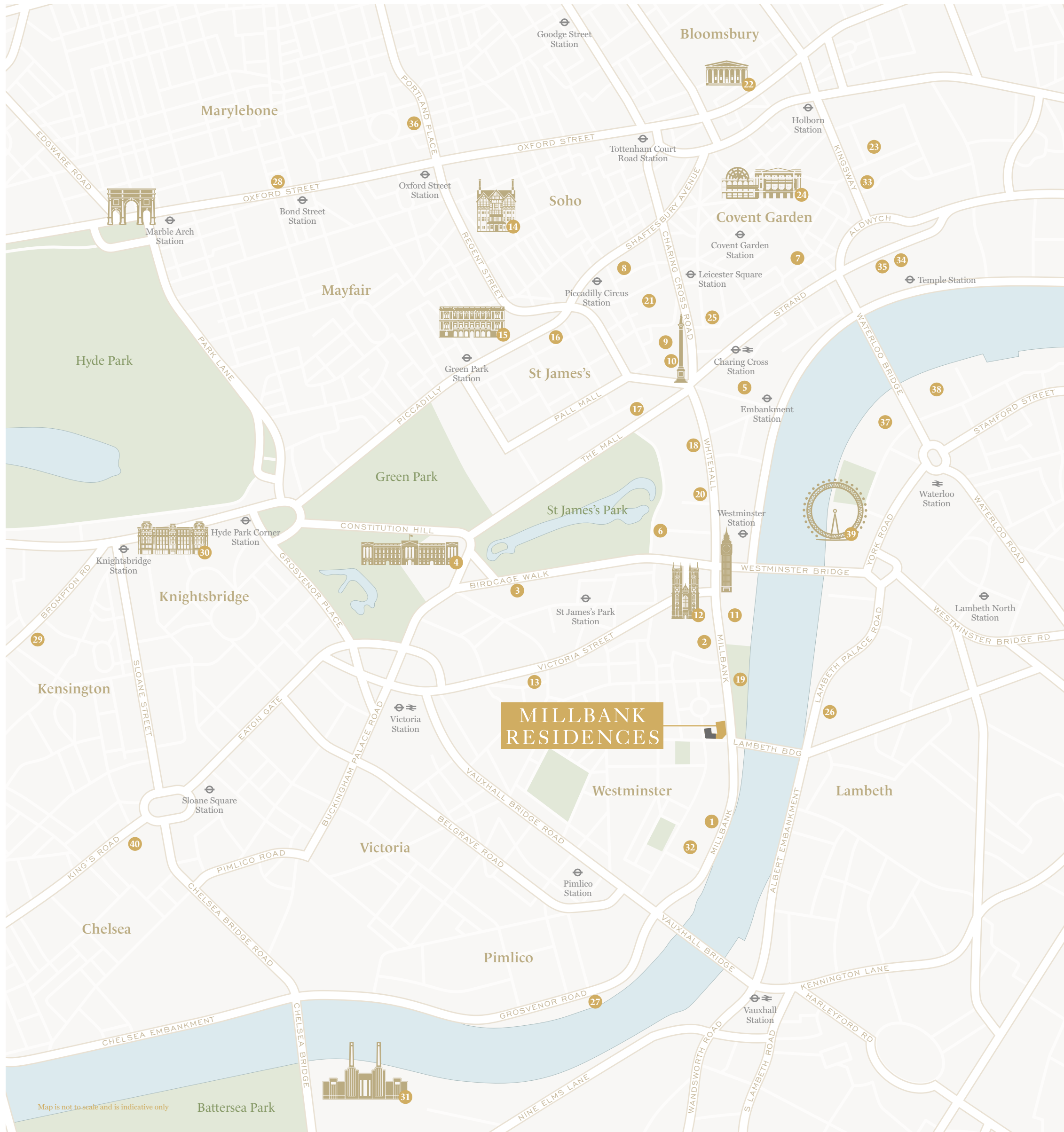


Westminster Underground Station



\*Tube times are from Westminster underground station and sourced from tfl.gov.uk. All times are approximate only.





## Live in the heart of London

Millbank Residences is located in prime central London, placing you right at the centre of the best that the city has to offer.

- |  |   |
|--|---|
| 1 Tate Britain                           | 21 Leicester Square                                 |
| 2 Jewel Tower                            | 22 British Museum                                   |
| 3 The Guards Museum                      | 23 Lincoln's Inn Fields                             |
| 4 Buckingham Palace                      | 24 Royal Opera House                                |
| 5 Benjamin Franklin House                | 25 London Coliseum                                  |
| 6 Churchill Museum and Cabinet War Rooms | 26 Lambeth Palace                                   |
| 7 London Transport Museum                | 27 Pimlico Garden and Shrubbery                     |
| 8 Chinatown                              | 28 Selfridges                                       |
| 9 National Gallery                       | 29 Harrods  |
| 10 Trafalgar Square                      | 30 Harvey Nichols                                   |
| 11 Houses of Parliament                  | 31 Battersea Power Station                          |
| 12 Westminster Abbey                     | 32 Chelsea College of Arts                          |
| 13 House of Fraser                       | 33 London School of Economics and Political Science |
| 14 Liberty                               | 34 King's College London                            |
| 15 Royal Academy of Arts                 | 35 The Courtauld Institute of Art                   |
| 16 Fortnum & Mason                       | 36 University of Westminster                        |
| 17 Mall Galleries                        | 37 Hayward Gallery                                  |
| 18 Household Cavalry Museum              | 38 National Theatre                                 |
| 19 Victoria Tower Gardens                | 39 London Eye                                       |
| 20 Downing Street                        | 40 Duke of York Square                              |







# WESTMINSTER, A RICH MIX OF THE OLD AND THE NEW

London's most historic borough is famous for its soaring neo-Gothic architecture, spacious green parks and the splendour and ceremony of countless royal weddings and coronations. A seat of political power since the Middle Ages, Westminster is still the dynamic centre of British government today.





Photograph of Westminster Bridge in London



## An area steeped in history

- |  |   |
|--|---|
| <p>960 AD — A community of monks is established on the original Westminster site.</p> <p>1065 — Westminster Abbey, the first Norman Romanesque church in England, is built under the rule of Edward the Confessor and consecrated on 28th December.</p> <p>1097 — Westminster Hall is built under William II (Rufus). The oldest building in Parliament, it is one of the few parts of the ancient Palace of Westminster that survives in almost its original form today.</p> <p>1100 — Westminster Abbey's long tradition of royal weddings begins with Henry I's marriage to Matilda of Scotland.</p> <p>1245 — Henry III pulls down Edward's church (except for the nave) and replaces it with the present abbey church in the pointed Gothic style of the period.</p> <p>1548 — The House of Commons begins to use St. Stephen's Chapel in the former palace precincts for meetings.</p> <p>1834 — Fire destroys almost the entire palace and leads to the building of the present Houses of Parliament.</p> <p>1838 — Queen Victoria's coronation takes place on 28th June, just over a year after she succeeds to the throne at the age of 18.</p> | <p>1902 — Edward VII and Alexandra of Denmark are crowned King and Queen of the United Kingdom at Westminster Abbey on 9th August.</p> <p>1937 — The coronation of King George VI at Westminster Abbey on 12th May is the first coronation to be broadcast on television and radio.</p> <p>1943 — Prime Minister Winston Churchill makes his famous victory gesture outside No. 10 Downing Street on 5th June.</p> <p>1947 — Princess Elizabeth marries Philip, Duke of Edinburgh at Westminster Abbey on 20th November.</p> <p>1953 — The coronation of Queen Elizabeth II takes place at Westminster Abbey on 2nd June, with around 8,000 guests in attendance from across the Commonwealth of Nations.</p> <p>1965 — The City of Westminster is established as a borough by the amalgamation of the boroughs of Westminster, Paddington and St. Marylebone.</p> <p>1987 — Westminster Abbey, St. Margaret's Church, and the Houses of Parliament are collectively designated a UNESCO World Heritage site.</p> <p>1997 — The formal, though not 'state' funeral of Diana, Princess of Wales, is held in Westminster Abbey.</p> <p>2011 — Prince William and Kate Middleton are married in Westminster Abbey on 29th April.</p> |
|--|---|



- 1 One of the first autotypes of Westminster Abbey, 1884
- 2 Prime Minister William Pitt addressing the House of Commons, 1793
- 3 Queen Victoria receiving the sacrament during her Coronation
- 4 Invitation to the Coronation of King Edward VII and Queen Alexandra at Westminster Abbey
- 5 Coronation of King George VI in Westminster Abbey
- 6 Prince William & Kate Middleton, Duke and Duchess of Cambridge, Royal Wedding Westminster Abbey, London





## Defined by the country's greatest leaders



### King Henry VIII of England

28 June 1491 – 28 January 1547

Henry VIII presided over the beginnings of the English Renaissance and the English Reformation. One of England's best-known monarchs, he was a keen hunter and sportsman and his many portraits attest to his statuesque physical appearance. Crowned King at Westminster Abbey in 1509, his subsequent reign was characterised by wars with France and Scotland, his persecution of both Roman Catholics and Protestants, and of course by his six wives.

*"Of all losses, time is the most irrecuperable for it can never be redeemed."*



### Archbishop Nicholas Wiseman

2 August 1802 – 15 February 1865

Widely respected for his intellect, humanitarianism and constructive achievements, Nicholas Wiseman was one of the chief architects of the 19th-century revival of Roman Catholicism in England. After receiving his doctorate of theology in 1825 he was ordained to the priesthood the following year, and then as a Bishop in 1840. In 1850 he was summoned to Rome by Pope Pius IX who made him Cardinal and first Archbishop of Westminster.

*"Thoughts against faith must be treated at times like temptations against any other virtue put away; though in cooler moments they may be safely analysed and unravelled."*



### King George V of the United Kingdom

3 June 1865 – 20 January 1936

Created Duke of York in 1892, Prince George was crowned King at Westminster in 1911. He faced formidable difficulties early in his reign from the constitutional struggle to curb the power of the House of Lords, but went on to garner much respect during the First World War, visiting the front in France several times. The public expressed its great affection and admiration for King George at celebrations for his Silver Jubilee in 1935.

*"The Old Country must wake up if she intends to maintain her old position of pre-eminence in her colonial trade against foreign competitors."*



### Prime Minister Winston Churchill

30 November 1874 - 24 January 1965

Sir Winston Churchill was Home Secretary in 1910, First Lord of the Admiralty in 1911 and oversaw the country's naval effort in the First World War. He went on to become Prime Minister from 1940 to 1945 and again from 1951 to 1955. One of the 20th-century's most significant figures, he was widely praised for his wartime leadership and for his work as a social reformer and writer. Among his many awards was the Nobel Prize in Literature.

*"It is not in our power to anticipate our destiny."*



### Queen Elizabeth II of the United Kingdom

21 April 1926

Elizabeth was born in London as the first child of the Duke and Duchess of York, later King George VI and Queen Elizabeth The Queen Mother. She married Philip, Duke of Edinburgh in 1947, acceded to the throne in 1952 and was crowned Queen Elizabeth II in 1953. She is the longest-living and longest-reigning British monarch; in 2017 she became the first British monarch to reach a Sapphire Jubilee, marking 65 years of reign.

*"The upward course of a nation's history is due in the long run to the soundness of heart of its average men and women."*





## Awe-inspiring architecture

*Westminster Abbey and the Palace of Westminster are two of the world's most well-known landmarks, drawing millions to the Capital every year.*

Instantly recognisable for its Big Ben clock tower, the Palace of Westminster is a neo-Gothic revival designed by Charles Barry to replace the medieval Palace that burned down in 1834.

Opposite the Palace, Westminster Abbey is a Gothic masterpiece constructed in the 13th century.

Its many ornate features include flying buttresses, intricate carvings and a breath-taking vaulted ceiling.



1 Big Ben Clock Tower, Westminster 2 Houses of Parliament, Westminster, view from Lambeth Palace 3 The ceiling in Westminster Abbey, Westminster







Photograph of St James's Park in Westminster





1 View of Buckingham Palace from St James's Park, Westminster 2 Queen Victoria Statue, Buckingham Palace 3 St James's Park and Horse Guards Parade, Westminster

## Royal relaxation in London's green parks

*Three of London's Royal Parks are in Westminster, including St James's Park, just a 15-minute walk away.*

Originally designed as recreation and hunting grounds for the monarchy, St James's Park covers 57 acres.

A delightful mix of formal flower gardens and green lawns, it's the perfect place to wile away a Sunday afternoon. You might even spot the pelicans that have lived in the park for nearly 350 years, presented as a gift from the Russian Ambassador to King Charles II.







## RESTORING THE GRANDEUR OF A GLORIOUS PAST

Millbank Residences was originally constructed between 1927 and 1929 in the neoclassical style of the interwar years. Designed by Sir Frank Baines, the building, previously known as the Imperial Chemical House, originally housed the headquarters of the Imperial Chemical Industries (ICI). Once the largest manufacturer in Britain, the ICI was also an early constituent of the FT 30 and later the FTSE 100. Now a Grade II listed building, Millbank Residences' grandeur still stands tall in Westminster's iconic skyline.



### A grand entrance

The dramatic doorway to Millbank Residences is one of the building's most important architectural features. Immense in scale, the entrance is befitting of the history and stature of the building. Creating an impressive sense of arrival, it hints at the splendour to be found inside.





## A fascinating work of master craftsmanship

*The imposing 20ft (6m) high main entrance doors located on Millbank were modelled specially for Imperial Chemical Industries.*

The main entrance doors to Millbank Residences, sculpted by William Bateman Fagan in 1927, were undoubtedly his greatest work. Each of the cast bronze doors is divided into six panels illustrating the progress of industry by the application of science. The left-hand panels show man engaged with Stone-Age technologies, while the panels on the right show how these activities have evolved under the stimulus of scientific research.

The carvings of Neptune and seahorses on the granite surround suggest Imperial Chemical House's overseas interests.





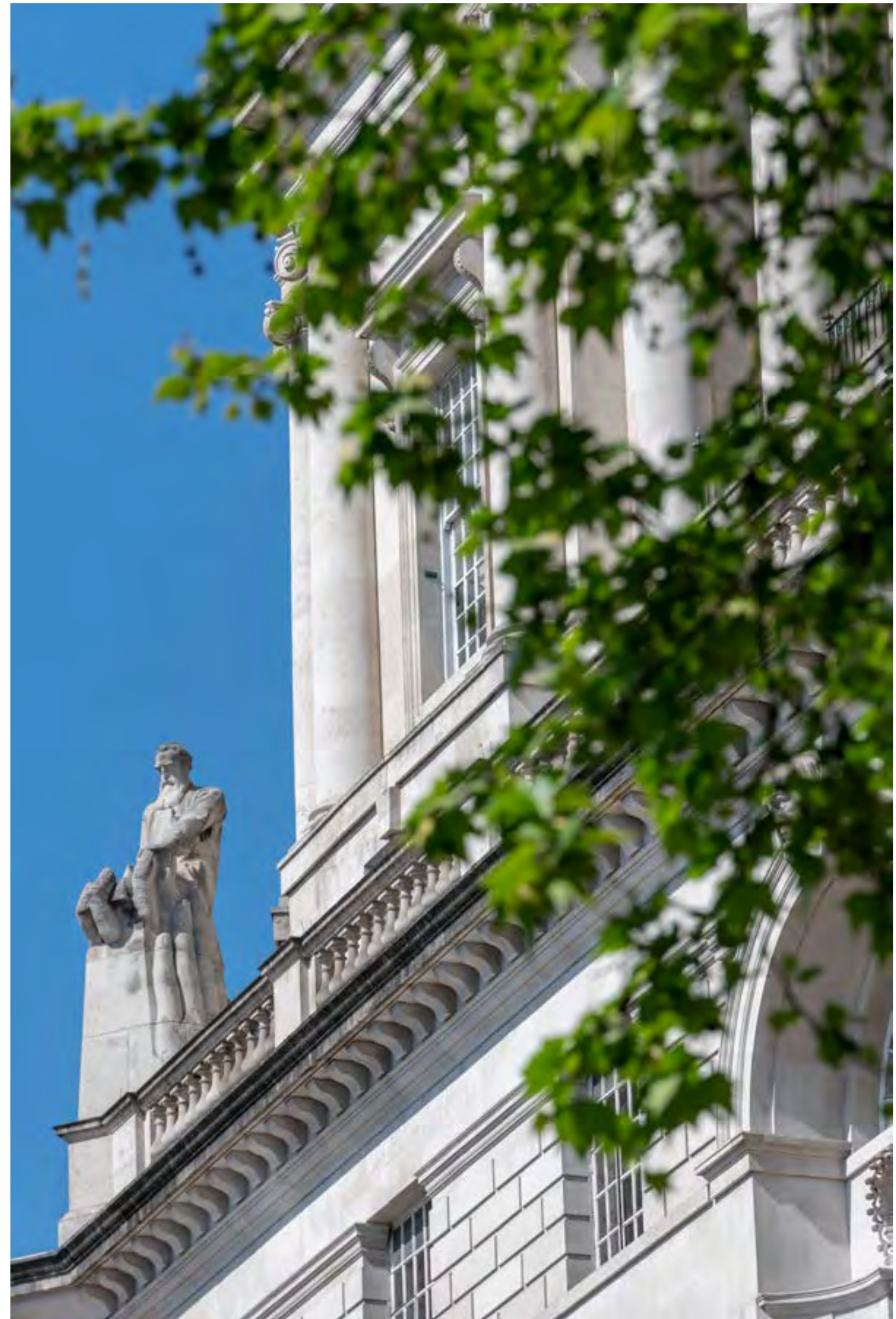


## Preserving an important piece of history

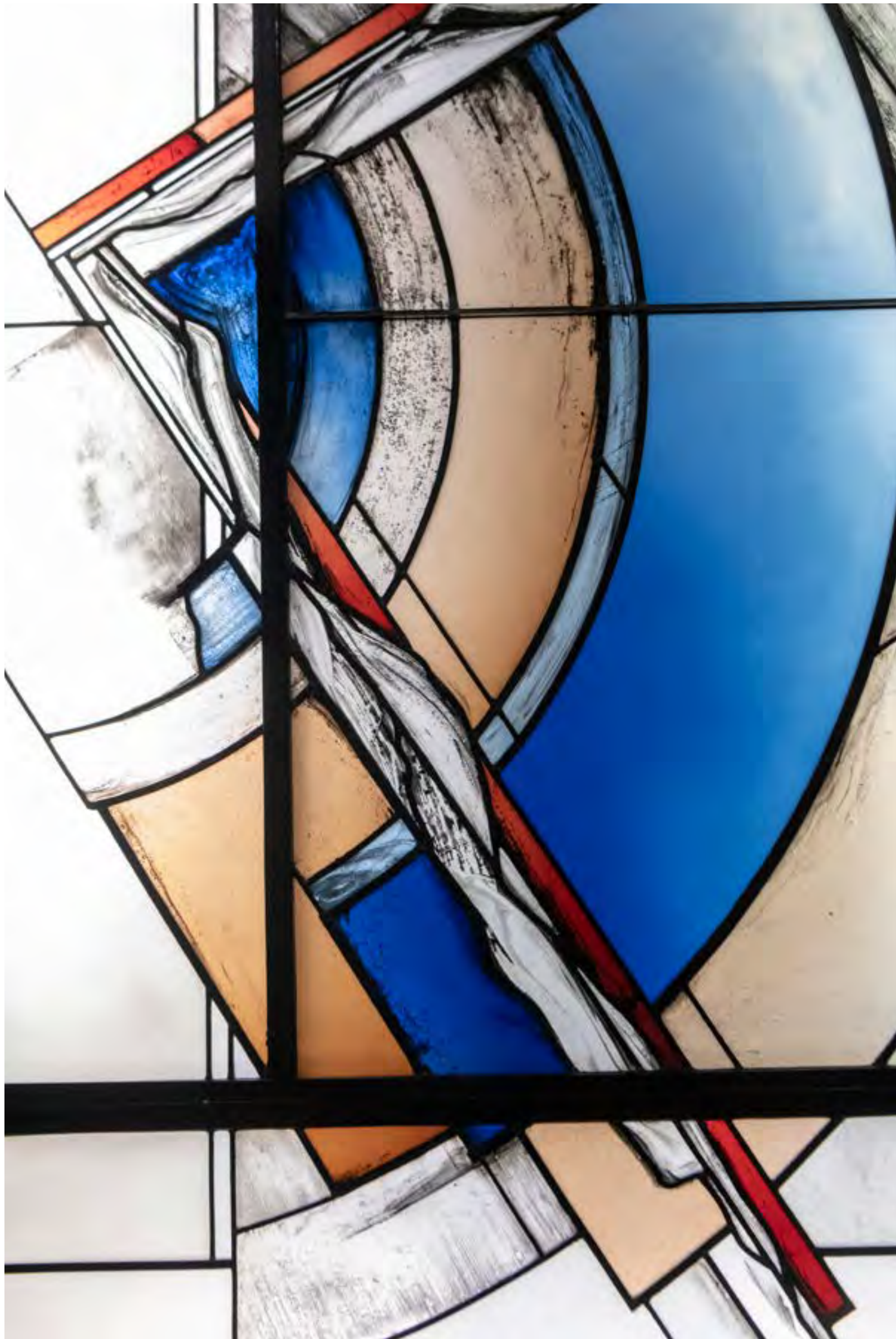
*The building's many original details to the exterior include a stunning stone balcony, Doric columns, and sculptures by Charles Sargeant Jagger.*

Jagger's unusual statues are allegorical figures. Carved in Portland stone at the base of the Doric columns, they represent the industries of construction, marine transport, agriculture and chemistry.

Also carved into the façades are a series of stone portrait heads by William Bateman Fagan. The heads are all of chemists and include four who were directly associated with ICI: Ludwig Mond, Alfred Mond, Harry McGowan and Alfred Nobel.







### Restoring the glamour of a bygone era

*Many of the interior details that have been preserved reflect the grand decadence of the 1920s.*

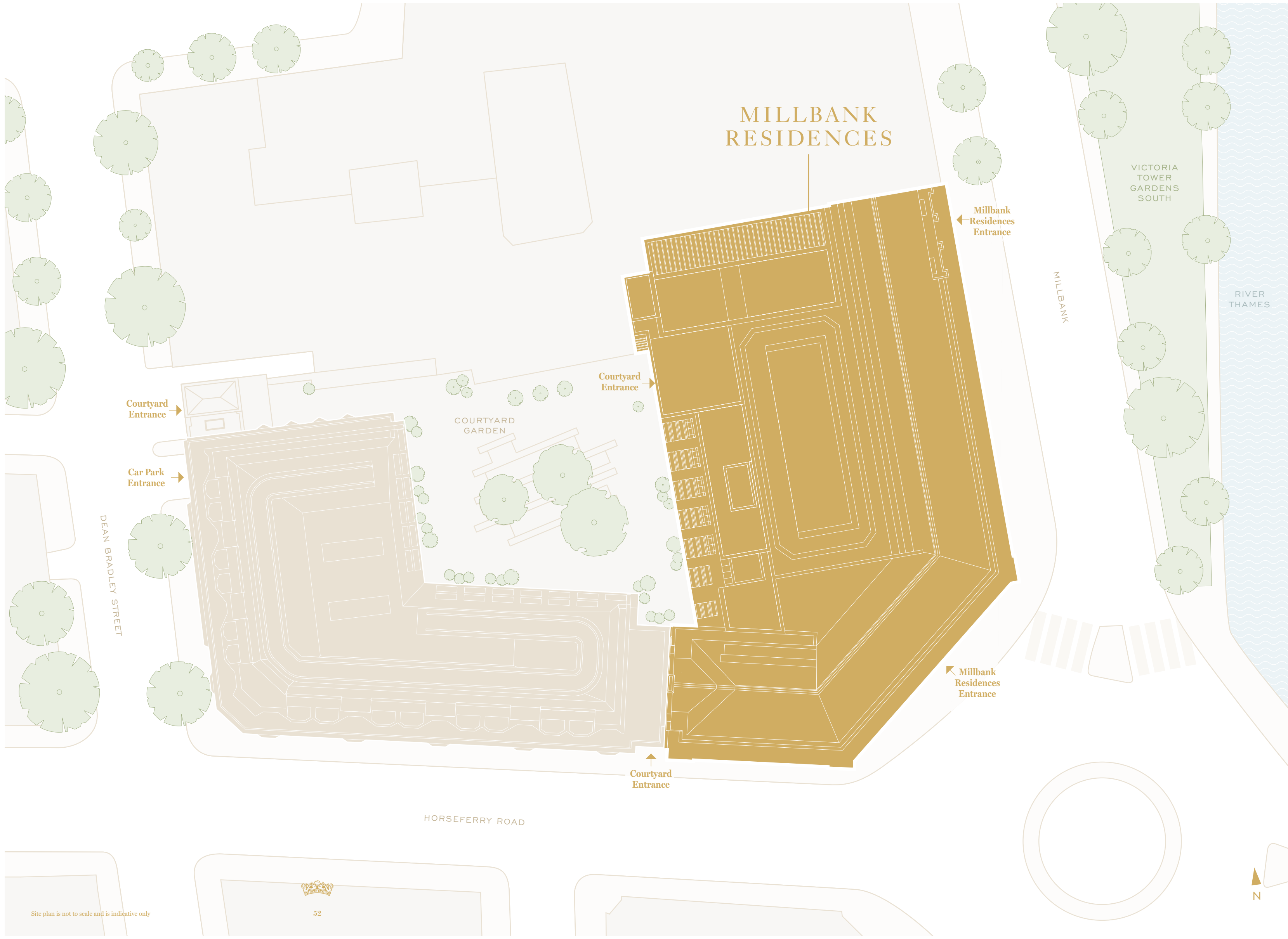
ICI was a world-leading company and Imperial Chemical House. 9 Millbank was originally designed as a headquarters building, to reflect the hopes and strength of Britain's newest and largest industrial enterprise.

Many of the original materials used have been retained at Millbank Residences, including ornate plasterwork and listed staircases.





# MILLBANK RESIDENCES



Courtyard Entrance

Car Park Entrance

DEAN BRADLEY STREET

COURTYARD GARDEN

Courtyard Entrance

HORSEFERRY ROAD

Courtyard Entrance

Millbank Residences Entrance

Millbank Residences Entrance

VICTORIA TOWER GARDENS SOUTH

RIVER THAMES

MILLBANK







The design of the spectacular main entrance hall is influenced by the building's heritage and features a beautiful floor with geometric patterns of black and white.











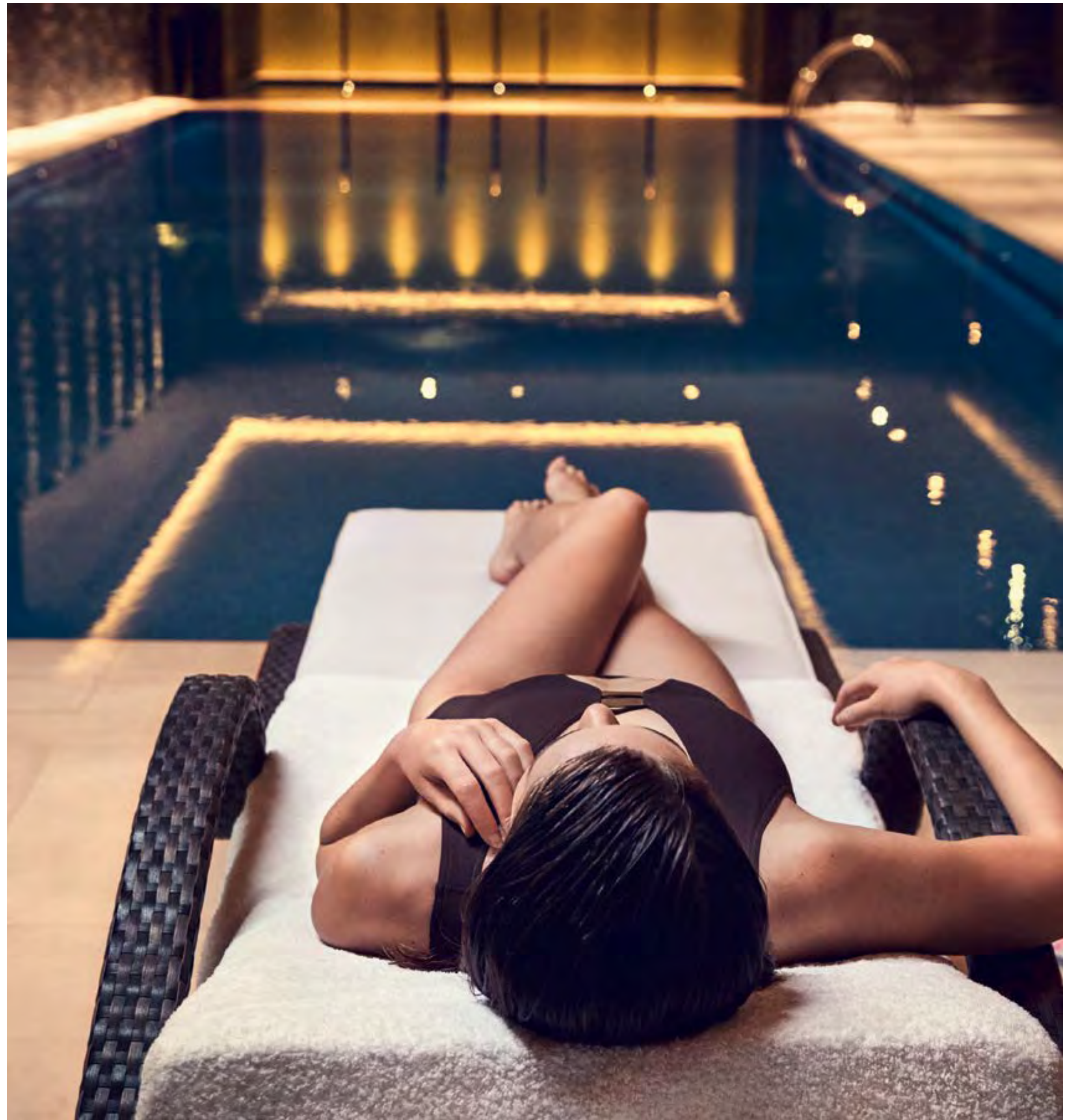
Millbank Residences is set around a delightfully landscaped inner courtyard, a tranquil outdoor space where you can relax and escape from the hustle and bustle of city life.





### At your service

Leisure facilities exclusive to the residents at 9 Millbank include a 24-hour concierge\*, a state-of-the-art gym, luxurious swimming pool with spa and treatment room, private cinema screening room, meeting rooms and underground parking.







Take a swim or simply relax in the tranquil and stylish setting of the swimming pool and spa.







Enjoy a workout on the latest equipment whenever you like, in the luxury surroundings of the private gym.







## FINELY CRAFTED LUXURY

From the moment you step through your front door you can expect high levels of luxury, set off by sumptuous materials, and exquisitely crafted finishes.







Embracing the classical proportions of the building's original 1920's architecture, each apartment at Millbank Residences is a gracious and stylish home.







Computer-generated image is indicative only

Kitchens are equipped with high-end appliances and crafted to a perfect finish, making entertaining at home a pure pleasure.







Enjoy a life of supreme comfort and ease in luxurious, light-filled spaces that have been meticulously designed to meet your every need.







Bedrooms are finished in a warm neutral palette to create a calm retreat where you can relax and rejuvenate.





No detail has been overlooked, from the quality of the fixtures and fittings to the beautifully crafted finishes to the walls and floors.





## Specification

### Kitchens

- Individually designed layouts
- Composite stone work surfaces and splashbacks (options available - subject to cut-off dates)
- Stainless steel 1½ bowl undermount sink and polished chrome mixer tap
- Matt lacquer shaker door with handles (options available - subject to cut-off dates)
- Bespoke shelving units to selected apartments where appropriate
- Pull-out pan units where appropriate
- Recessed LED ceiling downlighters and concealed lighting to wall cabinets
- Concealed multi-gang appliance panel and pop-up sockets to island / peninsula units where appropriate
- Küppersbusch touch control induction hob
- Re-circulating integrated extractor or island extractor to suit situation
- Küppersbusch stainless steel multi-function oven
- Küppersbusch stainless steel combination microwave oven
- Küppersbusch integrated fridge / freezer
- Integrated multi-function dishwasher
- Free-standing washer / dryer within vented utility cupboard / room
- Space-saving recycling bins

### Bathrooms

- White bath with bath filler and accessible matt lacquer painted timber bath panel
- Polished chrome concealed thermostatic mixer / diverter with handshower to selected baths
- Polished chrome concealed thermostatic mixer / diverter with handshower, showerhead and glass bath screen to selected baths
- Polished chrome concealed thermostatic mixer / diverter, showerhead and complete handshower set to shower areas of bathrooms / shower rooms
- Walk-in shower area to selected bathrooms / shower rooms with glass shower panels or doors to suit situation
- Composite stone and matt lacquer painted vanity unit with under mounted basin and polished chrome deck mixer taps
- Mirrored cabinet with matt lacquer vanity unit, shelving and shaver socket
- White WC pan with soft close seat / cover, concealed cistern and dual flush button

- Niche to shower areas with concealed lighting where appropriate
- Polished chrome ladder style, thermostatically controlled heated towel rail to bathrooms / shower rooms
- Porcelain tile wall finishes to selected walls (options available – subject to cut-off dates)
- Porcelain tile floor finishes with floor border detail (options available – subject to cut-off dates)
- Extract ventilation
- Recessed LED downlights to bathrooms / shower rooms / cloakrooms
- Accessories include toilet roll holder and robe hook

### Electrical Fittings

- Pre-wired for future pendant lighting by purchaser (suitable for chandeliers) to reception room and master bedroom
- Recessed LED downlighters throughout
- Automatic lighting to utility / services / coat cupboards
- 5 amp lighting circuit to reception room and bedrooms
- Television (terrestrial and Sky Q) points to principal rooms and master bedroom
- Telephone and data points to principal reception room and master bedroom
- Pre-wired for future automated curtains / blinds
- White power sockets and light switches
- Dimmer light controls where applicable

### Heating/Cooling

- Heating and hot water from a communal system with metered water / electric supply to all apartments
- Underfloor heating throughout
- Comfort cooling to all reception rooms and bedrooms

### Interior Finishes

- Feature engineered painted entrance and internal doors
- Feature cornice to selected hallway, principal reception rooms and master bedroom
- Painted architraves and skirtings, porcelain tile skirtings to wet areas where applicable

- Interior fittings to utility / services / coat cupboards to suit situation
- Polished chrome door handles throughout
- Bespoke fitted or walk-in wardrobes to master bedroom, internal fittings include rails, shelf, drawers and integrated lighting
- Engineered timber floor finishes or large format porcelain floor finishes to kitchens to suit situation (options available – subject to cut-off dates)
- Engineered timber floor finishes to hallways, reception rooms and master bedroom lobby areas where applicable (options available – subject to cut-off dates)
- Carpet floor finishes to bedrooms (options available – subject to cut-off dates)
- Blind boxes to selected reception rooms and bedrooms

### Terraces

- Well-proportioned terraces to selected apartments where indicated
- Paving to terraces with external lighting where indicated

### Security

- Video entry system viewed by individual apartment handset / screen
- Power and telephone points provided to all apartments for wireless intruder alarm to be fitted at a later date by purchaser (Subject to relevant consent in communal areas)
- All apartments provided with mains supply smoke detectors and fitted with domestic sprinkler systems
- Multi-point locking, door restrictor and spy hole to apartment entrance doors
- Doorbell to all apartments
- 24-hour concierge service\* and monitored CCTV

### Peace of Mind

- 999 year lease
- All apartments benefit from a 10-year build warranty

### Car Parking

- A general right to park within the managed CCTV-monitored parking area is available by separate negotiation

### Lifts

- All residential floors serviced by passenger lifts

### Interior Designed Entrance Lobby

- Feature heritage lobbies to ground floor street entrances with listed existing staircases
- Spacious reception lobby with bespoke feature floor and listed architectural features
- Comfortable waiting area for guests
- Bespoke concierge desk
- Feature lighting
- Glass doors to main entrance

### Lift Lobbies/Communal Hallways

- Bespoke carpet floor finishes and painted walls to upper levels
- Tiled floors and painted walls to ground floor and car park levels

### Residents' Leisure Suite

- Bespoke swimming pool and vitality pool
- Fitness studio with facilities for personal training
- Luxury private gym with the latest equipment
- Treatment room, sauna and steam room facilities
- Changing rooms with shower facilities
- Cinema room
- Meeting rooms and private dining facilities

### Management Agent

- A managing agent will be appointed to administer the effective operation and maintenance of the communal facilities, for which a service charge will be levied and apportioned to the benefit offered

