



THAMES CITY

LONDON SW8

BUILDING NO.9

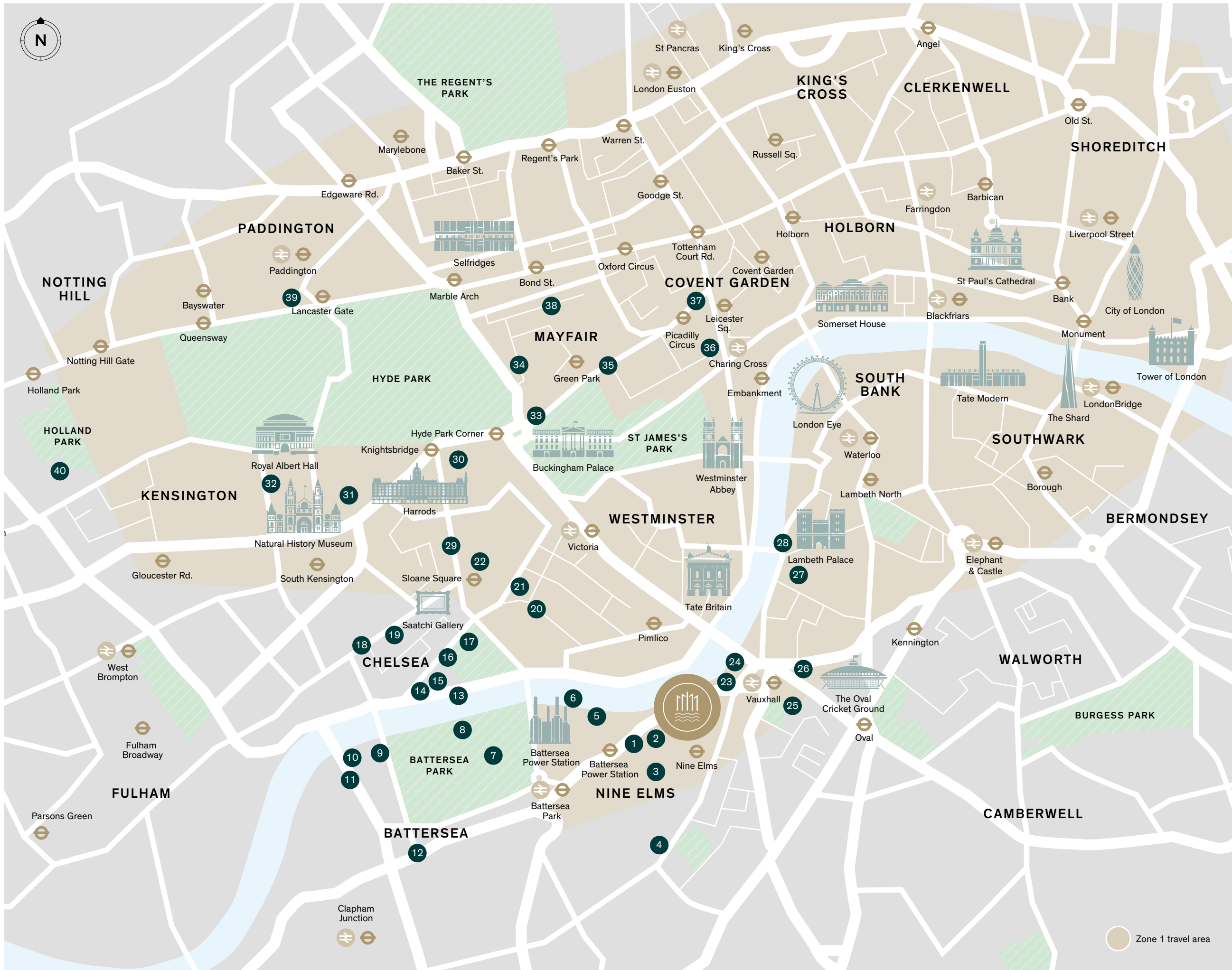
—

THAMES
CITY



PERFECTLY POSITIONED

- 1 NEW COVENT GARDEN MARKET
- 2 US EMBASSY
- 3 NINE ELMS SUNDAY MARKET
- 4 DELICIAS DELI
- 5 MEGAN'S RESTAURANT
- 6 BATTERSEA POWER STATION PIER
- 7 PEAR TREE CAFE
- 8 THE LONDON PEACE PAGODA
- 9 THE PRINCE ALBERT PUB
- 10 ROYAL COLLEGE OF ART BATTERSEA
- 11 AUGUSTINE KITCHEN
- 12 THE LIGHTHOUSE BATTERSEA PUB
- 13 CHELSEA EMBANKMENT
- 14 CHELSEA PHYSIC GARDEN
- 15 RESTAURANT GORDON RAMSAY
- 16 GORDON RAMSAY BAR & GRILL
- 17 ROYAL HOSPITAL CHELSEA
- 18 KING'S ROAD SHOPPING
- 19 STICKS 'N' SUSHI
- 20 NO.11 PIMLICO ROAD BAR & RESTAURANT
- 21 LA POULE AU POT RESTAURANT
- 22 COLBERT RESTAURANT
- 23 BRUNSWICK HOUSE BAR & RESTAURANT
- 24 VINE BAR
- 25 ITALO DELI
- 26 GASWORKS GALLERY
- 27 NEWPORT STREET GALLERY
- 28 GARDEN MUSEUM
- 29 SLOANE STREET SHOPPING
- 30 HARVEY NICHOLS KNIGHTSBRIDGE
- 31 VICTORIA & ALBERT MUSEUM
- 32 IMPERIAL COLLEGE LONDON
- 33 HARD ROCK CAFE
- 34 THE DORCHESTER HOTEL
- 35 THE RITZ HOTEL
- 36 TRAFALGAR SQUARE
- 37 SHAFTESBURY AVENUE
- 38 CLARIDGE'S HOTEL
- 39 ROYAL LANCASTER LONDON HOTEL
- 40 THE DESIGN MUSEUM



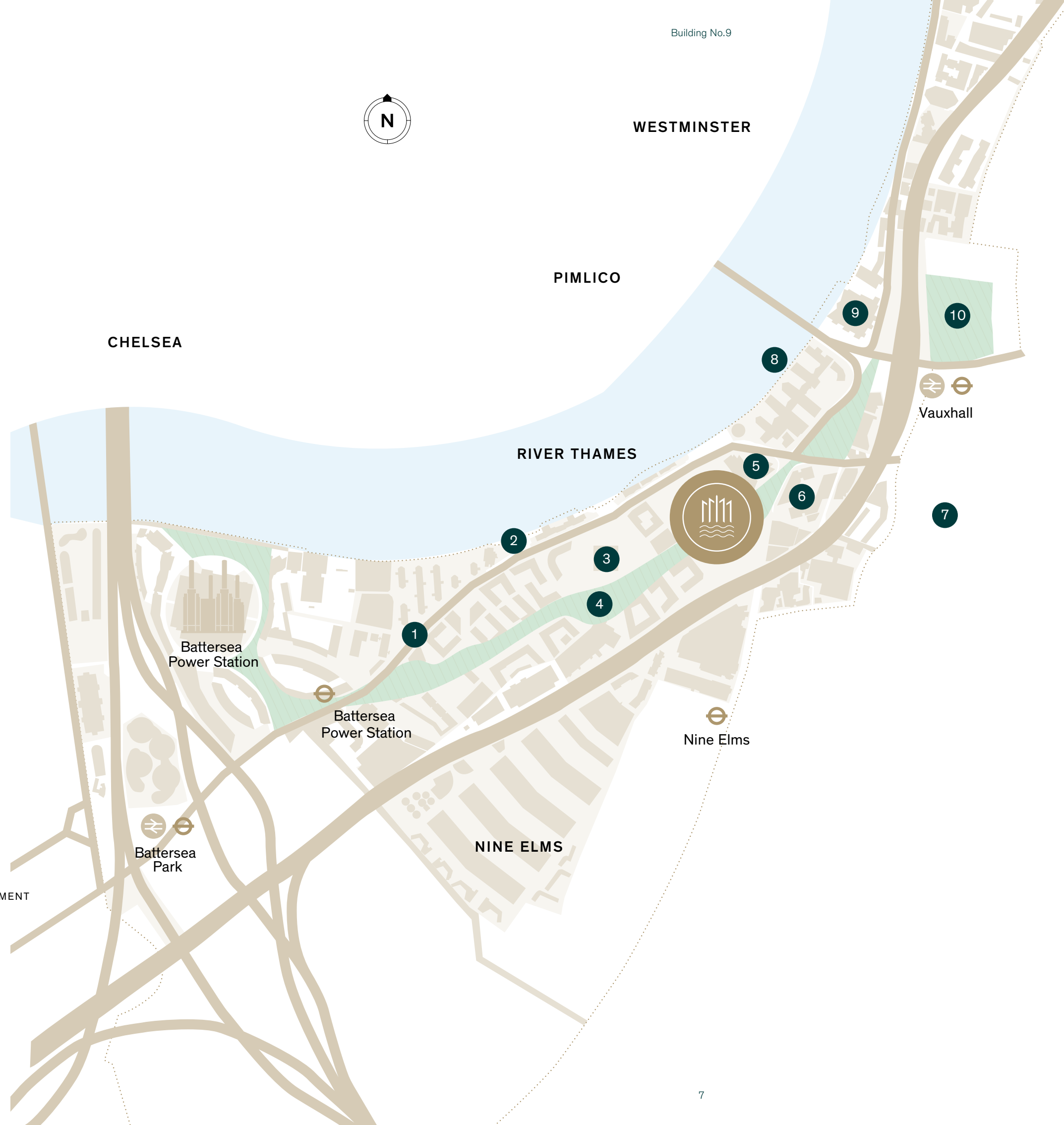
Map is not to scale and is indicative only.

The old industrial sites in Nine Elms are being completely transformed. The historic Vauxhall Cross and Albert Embankment are being redesigned into an attractive, pedestrian-friendly destination.

NINE ELMS

Nine Elms is the most ambitious regeneration project undertaken in London for decades. Taking advantage of its prime central and riverside location, it will completely transform the area, introducing new transport links and public spaces to create a vibrant destination for city dwellers and visitors.

- 1 THE NEW COVENT GARDEN MARKET
- 2 THE RIVER WALKWAY
- 3 US EMBASSY
- 4 LINEAR PARK
- 5 FORTHCOMING R&F DEVELOPMENT
- 6 FORTHCOMING R&F DEVELOPMENT
- 7 VAUXHALL PARK
- 8 ST GEORGE WHARF PIER
- 9 M16
- 10 PLEASURE GARDENS



THE LOCATION

SO MUCH TO EXPLORE

A place where you can enjoy direct views over the West End and the City of London and from where you can take an easy stroll along or over the river, to enjoy the very best of international culture, entertainment, retail and the Westminster hub.





Natural History Museum



The Serpentine



Harrods



Westminster



London Eye



Royal Albert Hall



Southbank Centre



Buckingham Palace

GETTING AROUND

With the newly opened Nine Elms tube station and Vauxhall tube and mainline station less than a ten minute walk away, getting around London from Thames City couldn't be simpler. You also have the enjoyable option of using the Thames Clipper service, whether to cruise up and down the river in your leisure time or to travel to your place of work each day.

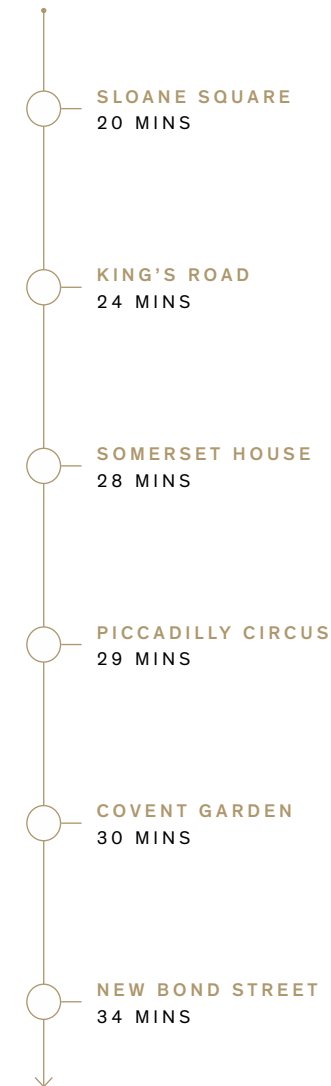


London and international travel is easy with multiple transport links on your doorstep and popular destinations accessible by foot.

BY TAXI

1

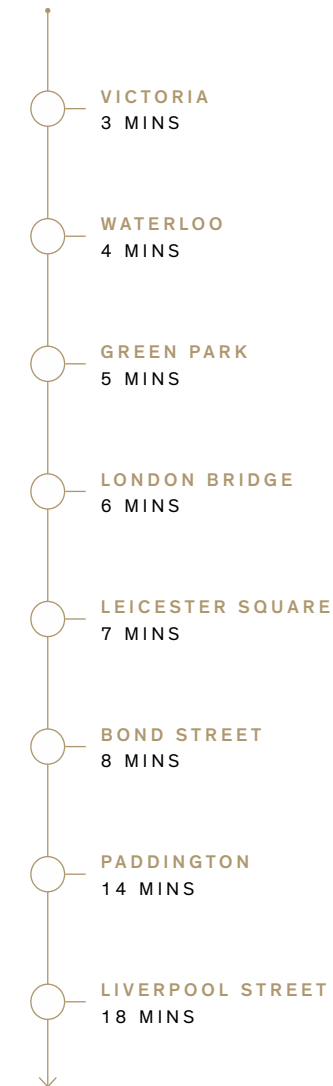
MINUTE WALK FROM THAMES CITY



BY TUBE & RAIL

5

MINUTES WALK TO VAUXHALL STATION



TO AIRPORTS

6

MINUTES WALK TO VAUXHALL STATION



BY RIVER BOAT

7

MINUTES WALK TO ST GEORGE WHARF PIER



THAMES CITY

AN UNPARALLELED AMBITION



Step inside this fresh district of London with three residential towers at its helm that's set to become the new favourite landmark on the London skyline. This luxury development is the ultimate combination of inventive contemporary living in a historic London location within the greenest of green surroundings.



SITE PLAN

- 1 PARK HYATT HOTEL
- 2 THAMES CITY PHASE 1
- 3 THAMES CITY PHASE 2
- 4 FORTHCOMING R&F DEVELOPMENT

LINEAR PARK

Linear Park is a brand new London park that provides a green walk from Vauxhall Bridge to Battersea Power Station. Publicly accessible it encompasses charming play areas, sculptured seating and hundreds of new trees.



Beautiful oriental planting and discretely placed seating create a delightful relaxing setting.

ENTRANCE LOBBY

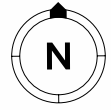
Arriving at your home in Thames City is an experience equal to entering the world's most luxurious and exclusive hotels.





WEST COURTYARD

The impressive structure of West Courtyard is a focal point within Thames City.



LEVEL – PODIUM GARDENS

The Podium provides a calm and secluded retreat for the residents at Thames City.

THE AMENITIES

DIVE INTO

THE CALM



The lifestyle on offer at Building No.9 will be exceptional. Amenities will include a gymnasium, yoga studio, swimming pool and spa. There will be a cosy library, wine and cigar bar, screening room and a private dining room and lounge area for entertaining friends, family and colleagues. Finally the jewel in the crown will be Lounge 39, in Building No.8 with its stunning views over London.

AMENITIES PLAN

OVER 6,400 SQ M OF AMENITIES PROVIDE OPPORTUNITIES TO RELAX, ENTERTAIN OR TO WORKOUT ANY TIME YOU WISH.



LOWER GROUND LEVEL



- 1 PRIVATE LOUNGE
- 2 WINE AND CIGAR BAR
- 3 BAR/LOUNGE AREA
- 4 WINE CELLAR
- 5 CINEMA
- 6 KTV ROOM
- 7 ENTRANCE LOBBY
- 8 CONFERENCE ROOM
- 9 LIBRARY
- 10 ART GALLERY
- 11 KIDS' CLUB
- 12 KIDS' POOL
- 13 SPA RECEPTION
- 14 CHANGING ROOMS
- 15 STEAM ROOM
- 16 DRY SAUNA
- 17 JACUZZI
- 18 YOGA STUDIO
- 19 GYM
- 20 PRIVATE STUDIOS
- 21 HAIR & NAIL SALON
- 22 RELAXATION ROOM
- 23 TREATMENT ROOM
- 24 REFUSE COLLECTION POINT
- 25 CARPARK RAMP
- 26 DROP OFF POINT

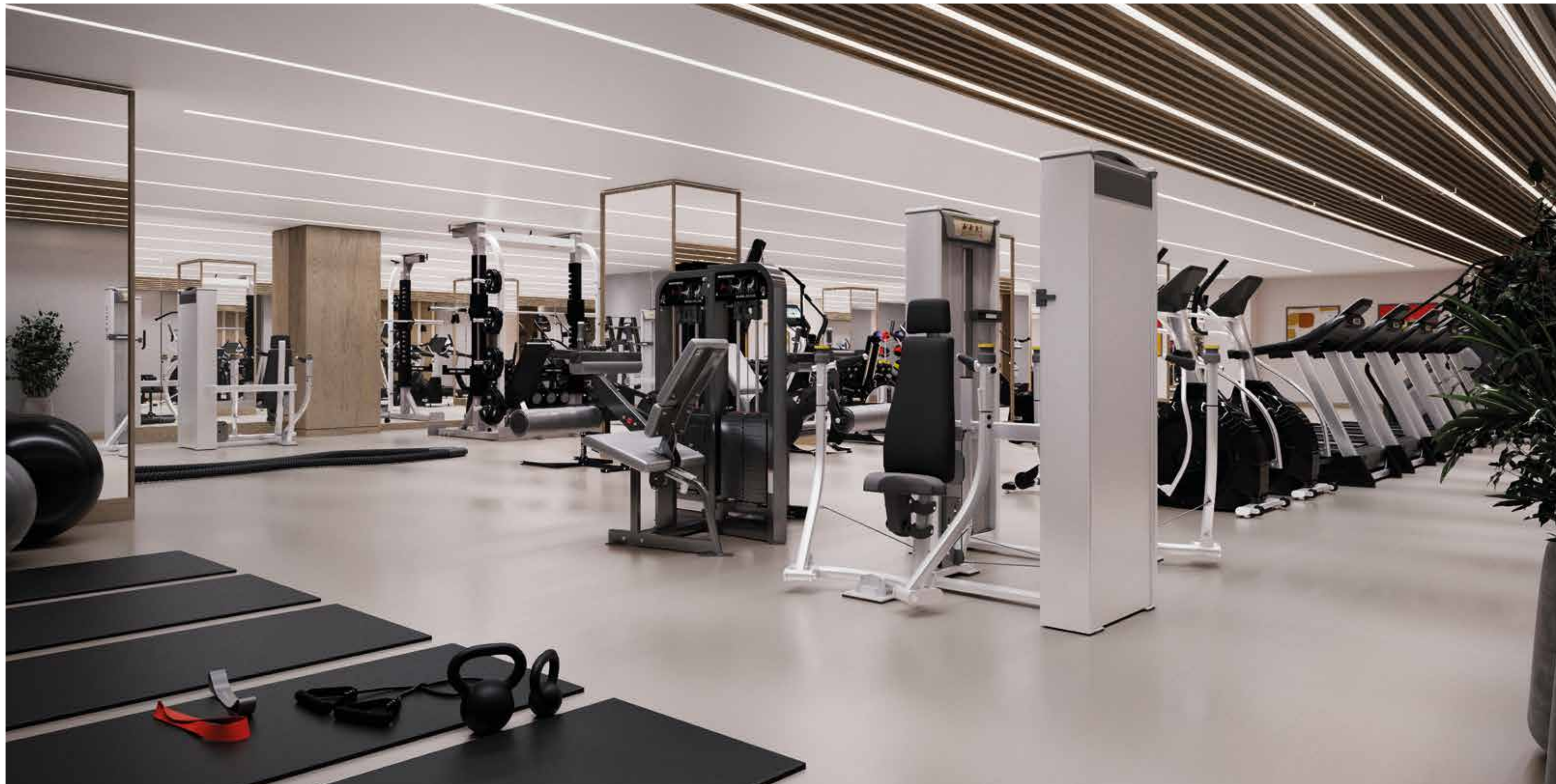
GROUND LEVEL

Plan is indicative only

THE POOL

Natural light will flood into the 30-metre pool through the thoughtfully placed concentric skylights above. Living walls and exotic plants will bring a tropical feel to the space – a true haven to enjoy.





STATE-OF-THE-ART GYMNASIUM

Situated on the lower ground floor there will be a comprehensive gym, fully equipped with the latest sports equipment. The spacious yoga studio will host regular yoga classes and the treatment rooms will be available to book for that much needed 'me' time.



The cinema offers residents of Thames City an opportunity to fully escape from reality.

PRIVATE DINING

Whether you're hosting a business lunch or a celebration with family and friends, the private dining service at Thames City can meet your needs, with its offering of beautiful surroundings, exquisite menus and finest wines.

THE CINEMA

The private cinema exclusively for residents is the ultimate in luxury entertainment, just moments from your door. Whether it's an anniversary you're celebrating or a great night in with friends, we can deliver a classic cinema experience and the movie to match.





THE LIBRARY

The library is a comforting antidote to a hectic day, with muted colours and a restful ambience that encourage you to switch off and unwind.

WINE AND CIGAR BAR

- ← The wine bar and library will be places for relaxation, somewhere to savour a fine cigar with a dram of whiskey, meet new people, make connections and enjoy some pleasant conversation.



LOUNGE 39

Being able to enjoy a drink with friends as the sun sets over an iconic capital city has to be one of life's true pleasures. The private residents lounge on level 39 of Building No.8 will be the perfect place to do so.

THE APARTMENTS — WHERE EVERYTHING HAS BEEN THOUGHTFULLY CONSIDERED

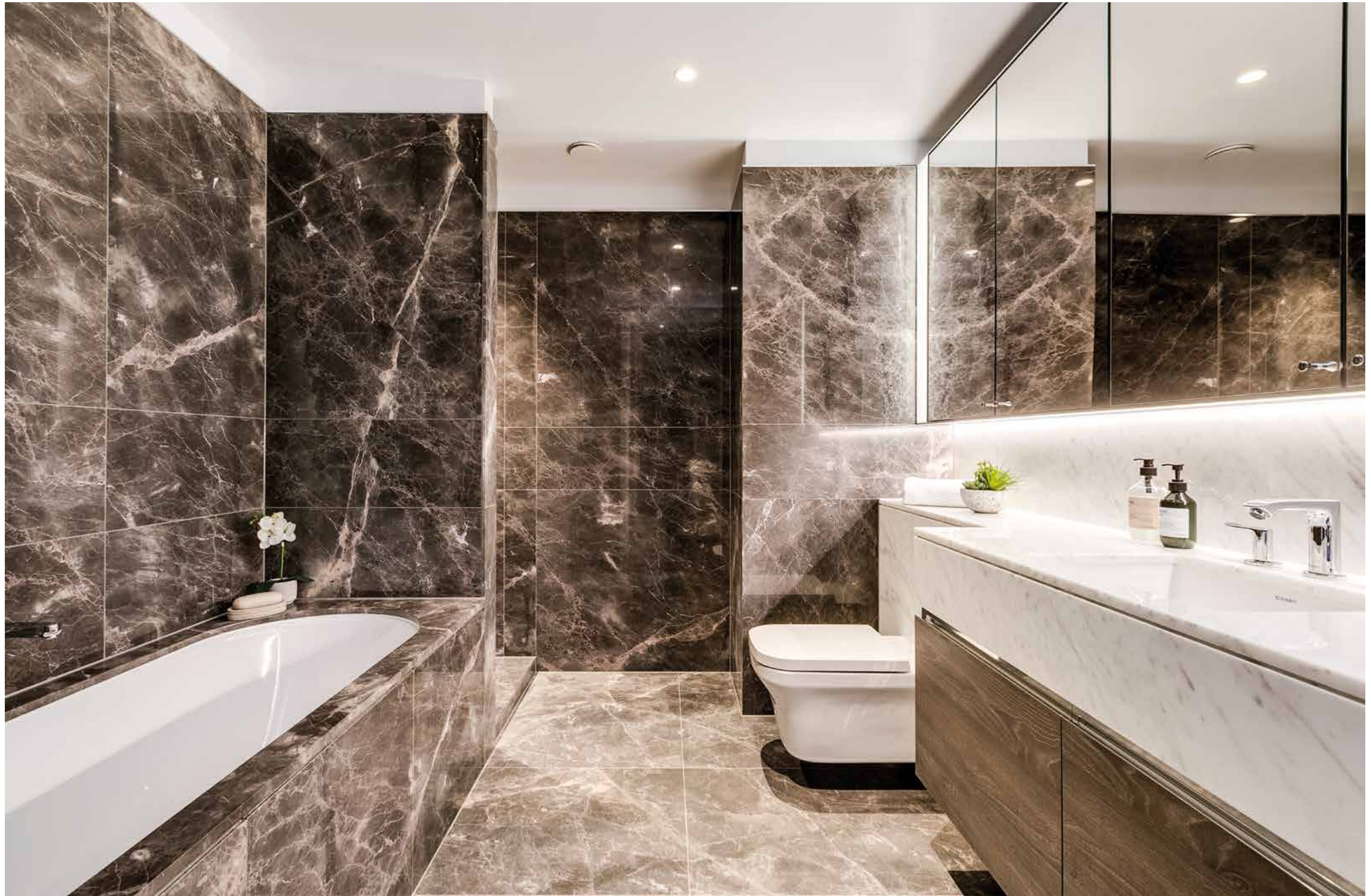
Admirable views, to the east and to the west along the river, can be found in many of the homes at Thames City, whether you choose a one-bedroom luxury apartment or a grand five-bedroom home.



STUNNING LIVING SPACES

Spacious, open-plan living lets you create both intimate and statement zones, whether you're enjoying your home alone, as a family or entertaining. Stylish design details and light-filled rooms, enhanced by floor-to-ceiling windows, make these stunning environments.







THE SPECIFICATION

KITCHENS

- Bespoke fully-fitted kitchens including wall and base cabinets
- Composite stone worktops
- Stainless steel splashback
- Undermounted stainless steel sink featuring single lever mixer tap
- Under cabinet lighting on wall-mounted cabinets
- Pop-up socket where applicable
- Fully integrated appliances including:
 - Miele oven
 - Miele microwave oven
 - Miele induction hob
 - Siemens or similar fridge/freezer
 - Siemens or similar dishwasher
 - Siemens or similar extractor fan
 - Wine cooler

UTILITY CUPBOARDS

- Siemens or similar washer/dryer
- Mechanical ventilation with heat recovery (MVHR)
- Heat interface unit/cooling interface unit with energy meter to provide domestic hot water and comfort cooling
- Underfloor heating manifold

BATHROOMS AND ENSUITES

- Marble finish to walls
- Marble finish to floors
- Marble-topped vanity units
- Built-in bathtub with marble trim and fascia
- Heated towel bars
- Wall-mounted Duravit WC with concealed cistern and soft close lid with dual flush plate
- White Duravit undermounted or wall-mounted wash basin where applicable
- Walk-in shower units with rain shower and wall-mounted shower set (four-piece bathrooms)
- Wall-mounted shower sets (three-piece bathrooms)
- Wall mounted mirror cabinet with under cabinet lighting
- Thermostat-controlled mixer taps throughout (Hansgrohe or similar)

WARDROBES

- Fully integrated wardrobes to primary and second bedrooms
- Integrated linear lighting

WALL AND FLOOR FINISHES

- Engineered timber floors to living and dining rooms, kitchens, and hallways
- Luxury carpet to bedrooms
- White painted finish to walls

HEATING, COOLING AND HOT WATER

- Comfort cooling to all habitable rooms
- Underfloor heating throughout
- Separate temperature control to lounge, kitchen and bedrooms via panel located in utility cupboard

ELECTRICAL FITTINGS

- Home automation systems to include heating and lighting
- Coffered ceilings with feature lighting to all living spaces
- Fully installed blind boxes pre-wired to allow for homeowner installation of automated blind system
- Adjustable mood lighting throughout
- Automated under cabinet lighting to all bathrooms
- Antique brass finish to all switches and sockets
- Access to lighting control and heating and comfort

TELECOMMUNICATIONS

- Antique brass finish to visible media plates
- Wiring for satellite/cable and terrestrial Freeview television
- TV outlet to living area and bedrooms
- Telephone outlet with broadband capability to living area and bedrooms
- Fibre optic infrastructure to all apartments

SECURITY AND PEACE OF MIND

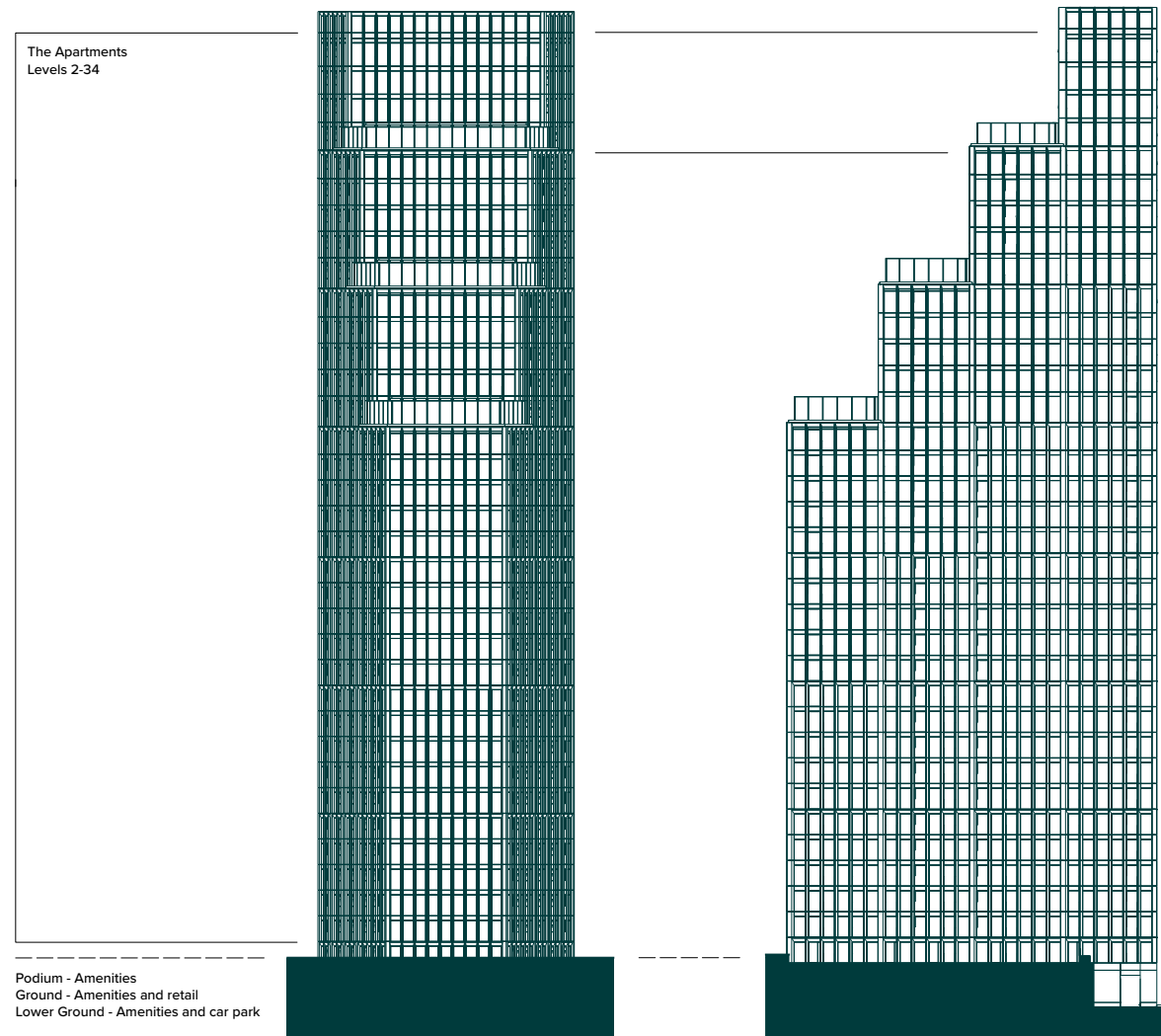
- Sprinklers throughout
- Mains supply operated smoke/heat detectors with battery back up
- Secure solid wood external doors with multi-point locking
- 24-hour concierge
- 10-year buildmark warranty

FAÇADE SYSTEM

- Triple glazed low iron full height glazing with internal bronze PPC
- Full height sliding door to living rooms with Juliet balcony

Specifications are upgraded for the sky collection.

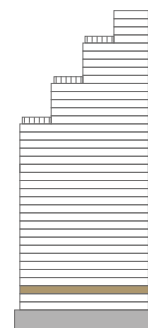
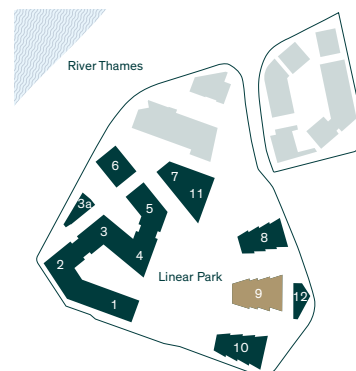
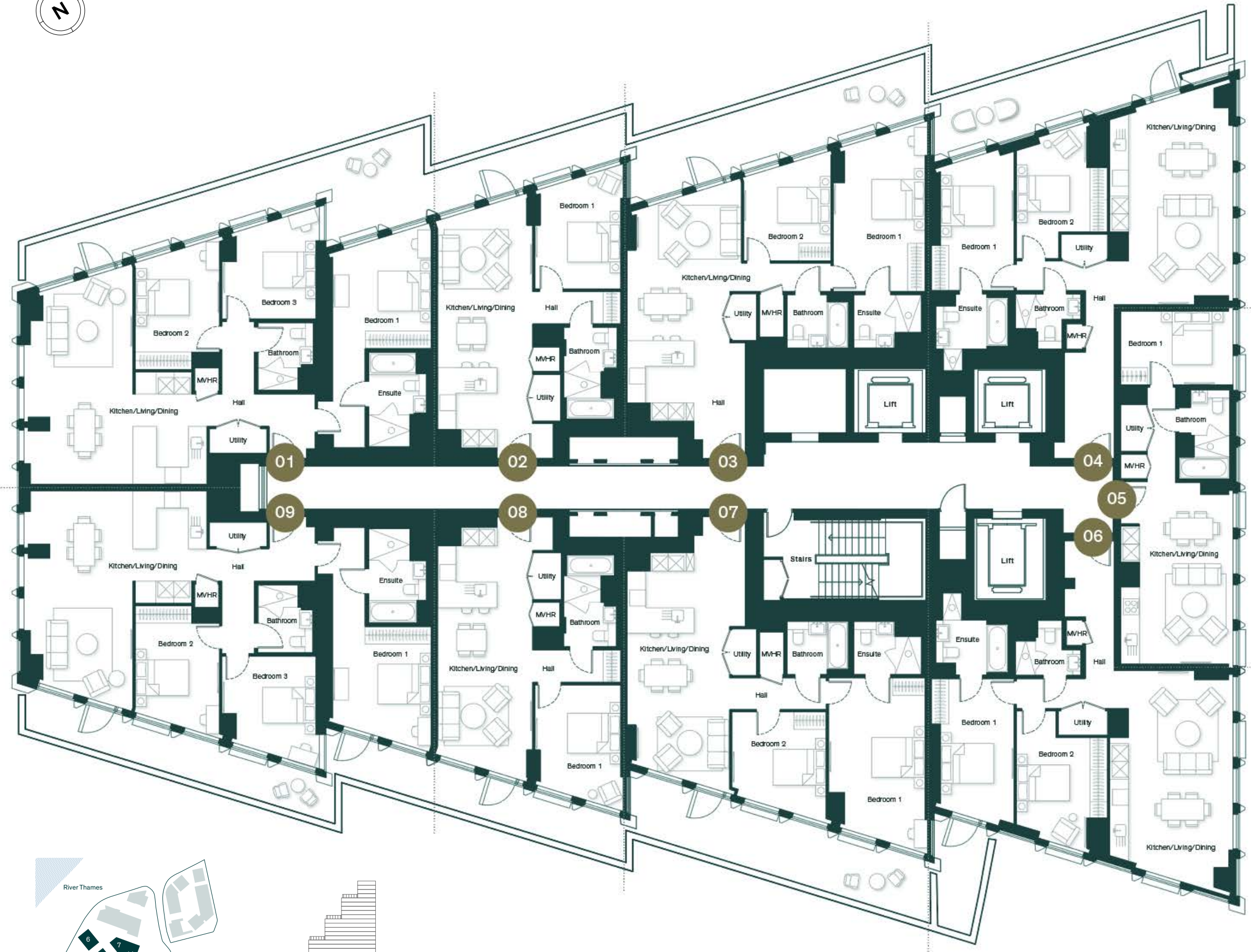
ELEVATIONS



BUILDING NO.9

FLOORPLATES

Level 02



Apartment 02.01

3 bedroom	121.4 sq m/1,307 sq ft
Terrace	34.44 sq m/370.7 sq ft
Kitchen/living/dining	7.67 × 6.62m 25' 2" × 21' 8"
Primary bedroom	4.20 × 3.69m 13' 9" × 12' 1"
Bedroom 2	3.84 × 3.15m 12' 7" × 10' 4"
Bedroom 3	3.70 × 3.52m 12' 2" × 11' 6"

Apartment 02.02

1 bedroom	65.59 sq m/706 sq ft
Terrace	13.68 sq m/147.3 sq ft
Kitchen/living/dining	9.03 × 3.55m 29' 7" × 11' 8"
Primary bedroom	4.18 × 3.21m 13' 9" × 10' 6"

Apartment 02.03

2 bedroom	93.1 sq m/1,002 sq ft
Terrace	27.85 sq m/299.8 sq ft
Kitchen/living/dining	8.52 × 4.27m 27' 11" × 14' 0"
Primary bedroom	5.87 × 3.43m 19' 3" × 11' 3"
Bedroom 2	3.62 × 3.26m 11' 10" × 10' 8"

Apartment 02.04

2 bedroom	96.13 sq m/1,035 sq ft
Terrace	25.34 sq m/272.8 sq ft
Kitchen/living/dining	7.74 × 3.91m 25' 5" × 12' 10"
Primary bedroom	5.05 × 2.75m 16' 7" × 9' 0"
Bedroom 2	3.86 × 2.75m 12' 8" × 9' 0"

Apartment 02.05

1 bedroom	56 sq m/603 sq ft
Kitchen/living/dining	6.79 × 3.50m 22' 3" × 11' 6"
Primary bedroom	4.20 × 2.75m 13' 9" × 9' 0"

Apartment 02.06

2 bedroom	95.86 sq m/1,032 sq ft
Terrace	11.48 sq m/123.6 sq ft
Kitchen/living/dining	7.78 × 3.91m 25' 6" × 12' 10"
Primary bedroom	5.28 × 2.75m 17' 4" × 9' 0"
Bedroom 2	4.02 × 2.75m 13' 2" × 9' 0"

Apartment 02.07

2 bedroom	94.54 sq m/1,018 sq ft
Terrace	28.06 sq m/302.0 sq ft
Kitchen/living/dining	8.57 × 3.83m 28' 1" × 12' 7"
Primary bedroom	6.10 × 3.60m 20' 0" × 11' 10"
Bedroom 2	3.72 × 3.53m 12' 2" × 11' 7"

Apartment 02.08

1 bedroom	65.71 sq m/707 sq ft
Terrace	13.66 sq m/147.0 sq ft
Kitchen/living/dining	9.03 × 3.55m 29' 7" × 11' 8"
Primary bedroom	4.23 × 3.21m 13' 11" × 10' 6"

Apartment 02.09

3 bedroom	121.38 sq m/1,307 sq ft
Terrace	28.55 sq m/307.3 sq ft
Kitchen/living/dining	7.68 × 6.62m 25' 2" × 21' 8"
Primary bedroom	4.20 × 3.69m 13' 9" × 12' 1"
Bedroom 2	3.84 × 3.15m 12' 7" × 10' 4"
Bedroom 3	3.70 × 3.52m 12' 2" × 11' 6"

Levels 03 – 08



Apartment 03.01 – 08.01

3 bedroom	123.22 sq m/1,326 sq ft	
Kitchen/living/dining	7.67 × 6.85m	25' 2" × 22' 6"
Primary bedroom	4.20 × 3.69m	13' 9" × 12' 1"
Bedroom 2	3.84 × 3.15m	12' 7" × 10' 4"
Bedroom 3	3.63 × 3.52m	11' 11" × 11' 6"

Apartment 03.02 – 08.02

1 bedroom	65.63 sq m/706 sq ft	
Kitchen/living/dining	9.03 × 3.55m	29' 7" × 11' 8"
Primary bedroom	4.18 × 3.21m	13' 9" × 10' 6"

Apartment 03.03 – 08.03

2 bedroom	93.14 sq m/1,003 sq ft	
Kitchen/living/dining	8.52 × 4.27m	27' 11" × 14' 0"
Primary bedroom	5.87 × 3.43m	19' 3" × 11' 3"
Bedroom 2	3.62 × 3.26m	11' 10" × 10' 8"

Apartment 03.04 – 08.04

2 bedroom	95.74 sq m/1,031 sq ft	
Kitchen/living/dining	7.74 × 3.91m	25' 5" × 12' 10"
Primary bedroom	5.05 × 2.75m	16' 7" × 9' 0"
Bedroom 2	3.86 × 2.75m	12' 8" × 9' 0"

Apartment 03.05 – 08.05

1 bedroom	56 sq m/603 sq ft	
Kitchen/living/dining	6.79 × 3.50m	22' 3" × 11' 6"
Primary bedroom	4.20 × 2.75m	13' 9" × 9' 0"

Apartment 03.06 – 08.06

2 bedroom	95.89 sq m/1,032 sq ft	
Kitchen/living/dining	7.78 × 3.91m	25' 6" × 12' 10"
Primary bedroom	5.28 × 2.75m	17' 4" × 9' 0"
Bedroom 2	4.02 × 2.75m	13' 2" × 9' 0"

Apartment 03.07 – 08.07

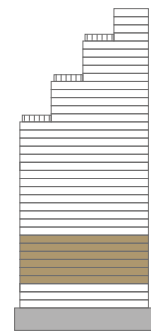
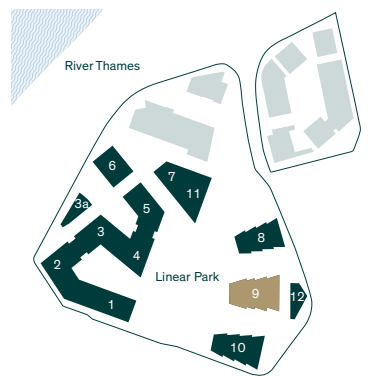
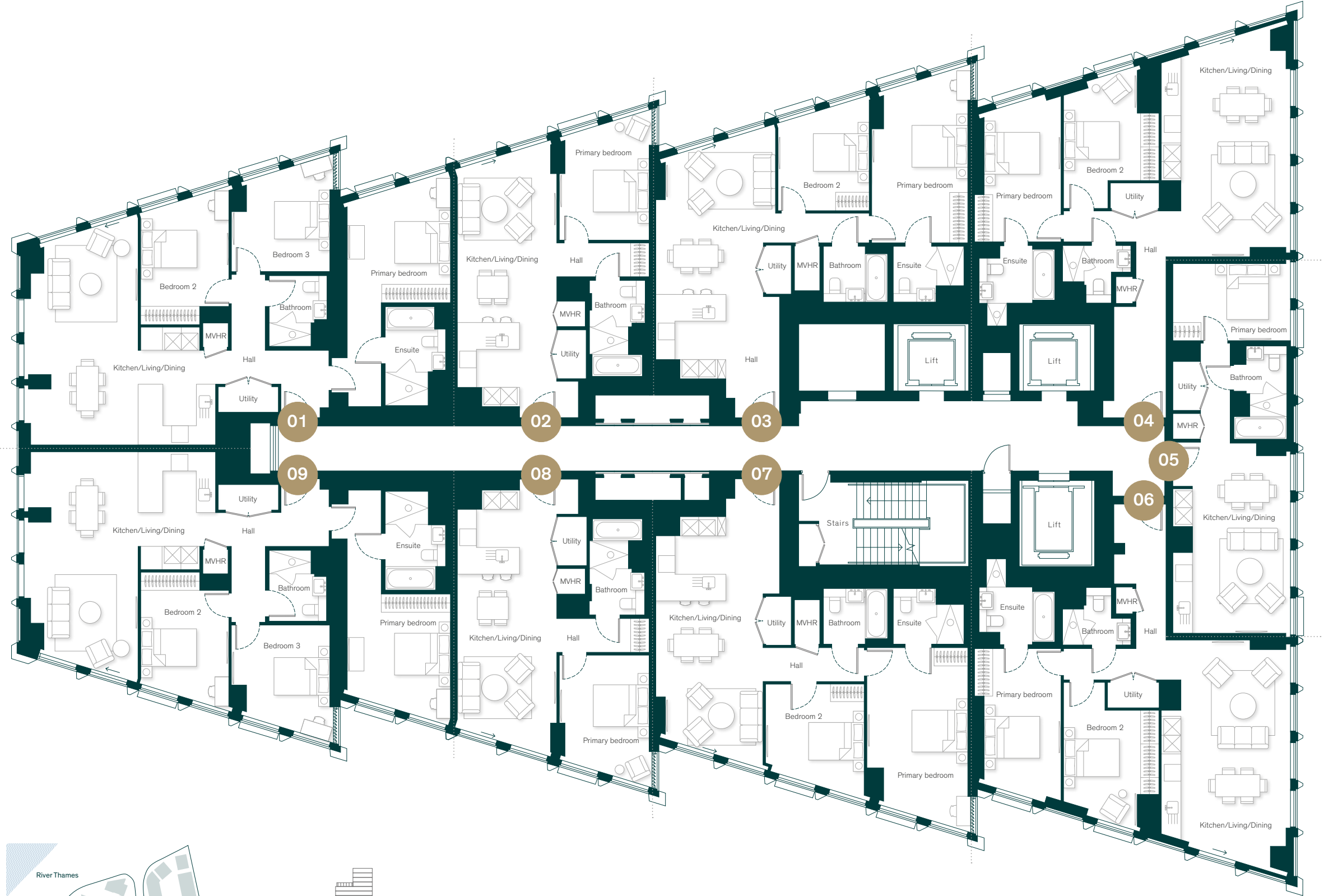
2 bedroom	94.56 sq m/1,018 sq ft	
Kitchen/living/dining	8.56 × 3.83m	28' 1" × 12' 7"
Primary bedroom	6.10 × 3.60m	20' 0" × 11' 10"
Bedroom 2	3.69 × 3.53m	12' 1" × 11' 7"

Apartment 03.08 – 08.08

1 bedroom	65.74 sq m/708 sq ft	
Kitchen/living/dining	9.03 × 3.55m	29' 7" × 11' 8"
Primary bedroom	4.23 × 3.21m	13' 11" × 10' 6"

Apartment 03.09 – 08.09

3 bedroom	123.88 sq m/1,333 sq ft	
Kitchen/living/dining	7.68 × 6.85m	25' 2" × 22' 6"
Primary bedroom	4.20 × 3.69m	13' 9" × 12' 1"
Bedroom 2	3.84 × 3.15m	12' 7" × 10' 4"
Bedroom 3	3.63 × 3.52m	11' 11" × 11' 6"



Level 09

Apartment 9.01

3 bedroom	123.41 sq m/1,328 sq ft	
Kitchen/living/dining	7.67 × 6.85m	25' 2" x 22' 6"
Primary bedroom	4.20 × 3.69m	13' 9" x 12' 1"
Bedroom 2	3.84 × 3.15m	12' 7" x 10' 4"
Bedroom 3	3.69 × 3.52m	12' 1" x 11' 6"

Apartment 9.02

1 bedroom	65.63 sq m/706 sq ft	
Kitchen/living/dining	9.03 × 3.55m	29' 7" x 11' 8"
Primary bedroom	4.18 × 3.21m	13' 9" x 10' 6"

Apartment 9.03

2 bedroom	93.14 sq m/1,003 sq ft	
Kitchen/living/dining	8.52 × 4.27m	27' 11" x 14' 0"
Primary bedroom	5.87 × 3.43m	19' 3" x 11' 3"
Bedroom 2	3.62 × 3.26m	11' 10" x 10' 8"

Apartment 9.04

2 bedroom	95.74 sq m/1,031 sq ft	
Kitchen/living/dining	7.74 × 3.91m	25' 5" x 12' 10"
Primary bedroom	4.94 × 2.75m	16' 2" x 9' 0"
Bedroom 2	3.86 × 2.75m	12' 8" x 9' 0"

Apartment 9.05

1 bedroom	56 sq m/603 sq ft	
Kitchen/living/dining	6.79 × 3.50m	22' 3" x 11' 6"
Primary bedroom	4.20 × 2.75m	13' 9" x 9' 0"

Apartment 9.06

2 bedroom	95.89 sq m/1,032 sq ft	
Kitchen/living/dining	7.78 × 3.91m	25' 6" x 12' 10"
Primary bedroom	5.28 × 2.75m	17' 4" x 9' 0"
Bedroom 2	4.02 × 2.75m	13' 2" x 9' 0"

Apartment 9.07

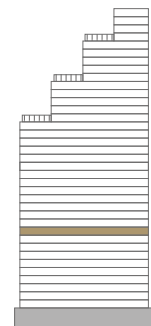
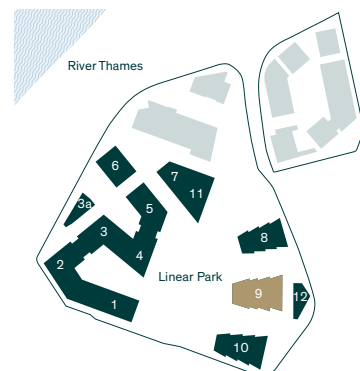
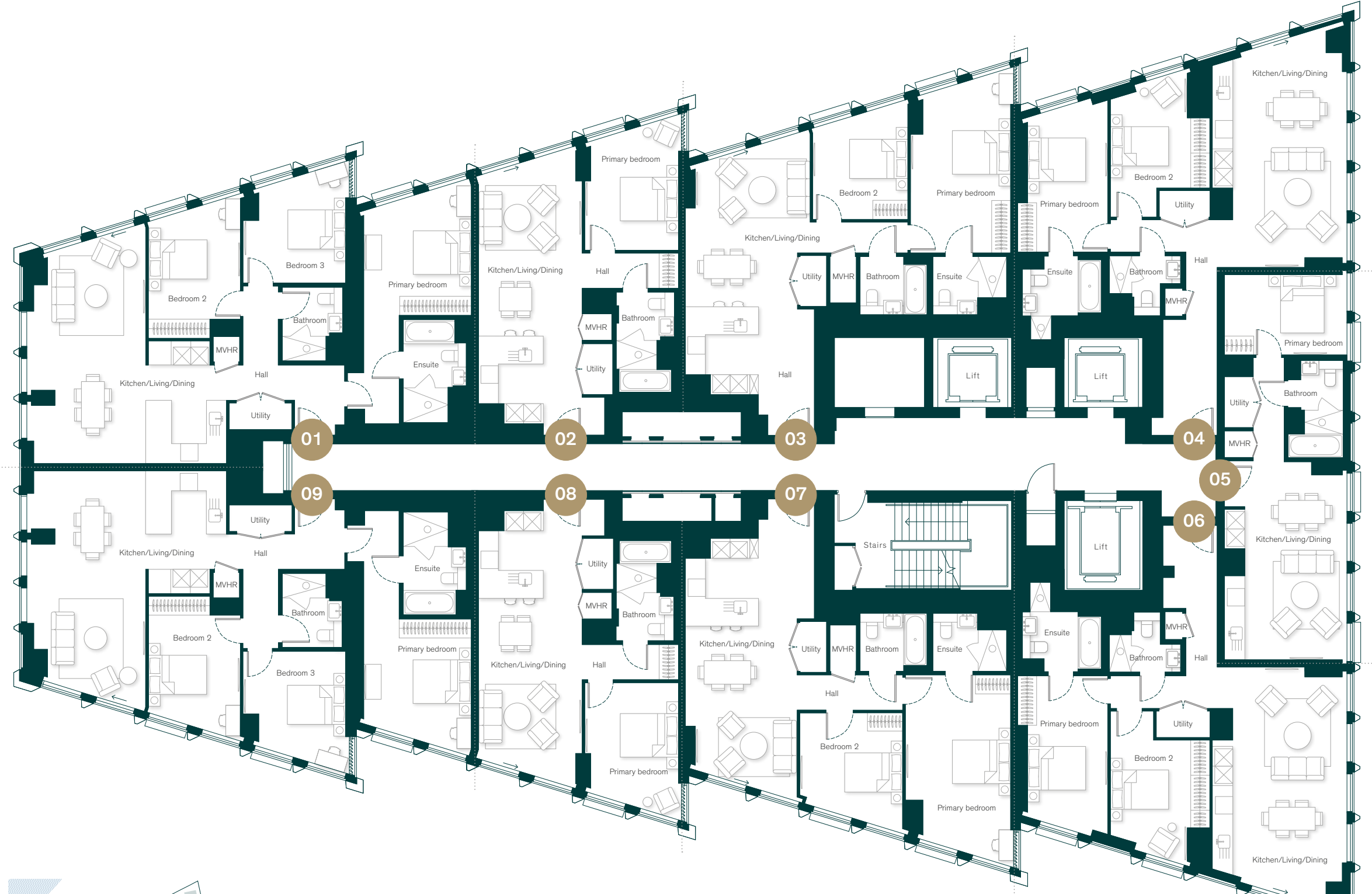
2 bedroom	94.56 sq m/1,018 sq ft	
Kitchen/living/dining	8.57 × 3.83m	28' 1" x 12' 7"
Primary bedroom	6.10 × 3.60m	20' 0" x 11' 10"
Bedroom 2	3.69 × 3.53m	12' 1" x 11' 7"

Apartment 9.08

1 bedroom	65.74 sq m/708 sq ft	
Kitchen/living/dining	9.03 × 3.55m	29' 7" x 11' 8"
Primary bedroom	4.23 × 3.21m	13' 11" x 10' 6"

Apartment 9.09

3 bedroom	123.88 sq m/1,333 sq ft	
Kitchen/living/dining	7.68 × 6.85m	25' 2" x 22' 6"
Primary bedroom	4.20 × 3.69m	13' 9" x 12' 1"
Bedroom 2	3.84 × 3.15m	12' 7" x 10' 4"
Bedroom 3	3.70 × 3.52m	12' 2" x 11' 6"



Levels 10 - 16



Apartment 10.01 - 16.01

3 bedroom	128.1 sq m/1,379 sq ft	
Kitchen/living/dining	7.67 × 6.69m	25' 2" × 21' 11"
Primary bedroom	4.18 × 4.17m	13' 9" × 13' 8"
Bedroom 2	3.84 × 3.31m	12' 7" × 10' 10"
Bedroom 3	3.69 × 3.57m	12' 1" × 11' 8"

Apartment 10.02 - 16.02

1 bedroom	66.24 sq m/713 sq ft	
Kitchen/living/dining	9.03 × 3.55m	29' 7" × 11' 8"
Primary bedroom	4.18 × 3.21m	13' 9" × 10' 6"

Apartment 10.03 - 16.03

2 bedroom	95.58 sq m/1,029 sq ft	
Kitchen/living/dining	8.62 × 4.27m	28' 3" × 14' 0"
Primary bedroom	5.87 × 3.43m	19' 3" × 11' 3"
Bedroom 2	3.62 × 3.26m	11' 10" × 10' 8"

Apartment 10.04 - 16.04

2 bedroom	97.97 sq m/1,055 sq ft	
Kitchen/living/dining	7.74 × 3.91m	25' 5" × 12' 10"
Primary bedroom	4.94 × 2.75m	16' 2" × 9' 0"
Bedroom 2	3.86 × 2.75m	12' 8" × 9' 0"

Apartment 10.05 - 16.05

1 bedroom	56.06 sq m/603 sq ft	
Kitchen/living/dining	6.79 × 3.50m	22' 3" × 11' 6"
Primary bedroom	4.20 × 2.75m	13' 9" × 9' 0"

Apartment 10.06 - 16.06

2 bedroom	97.8 sq m/1,053 sq ft	
Kitchen/living/dining	7.78 × 3.91m	25' 6" × 12' 10"
Primary bedroom	5.28 × 2.75m	17' 4" × 9' 0"
Bedroom 2	4.02 × 2.75m	13' 2" × 9' 0"

Apartment 10.07 - 16.07

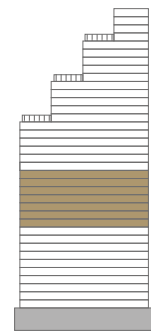
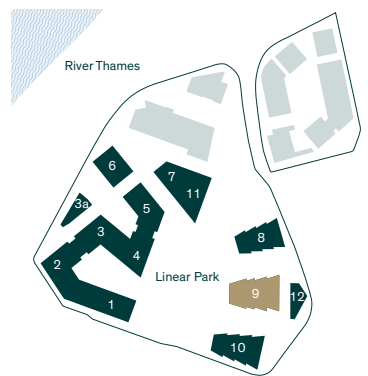
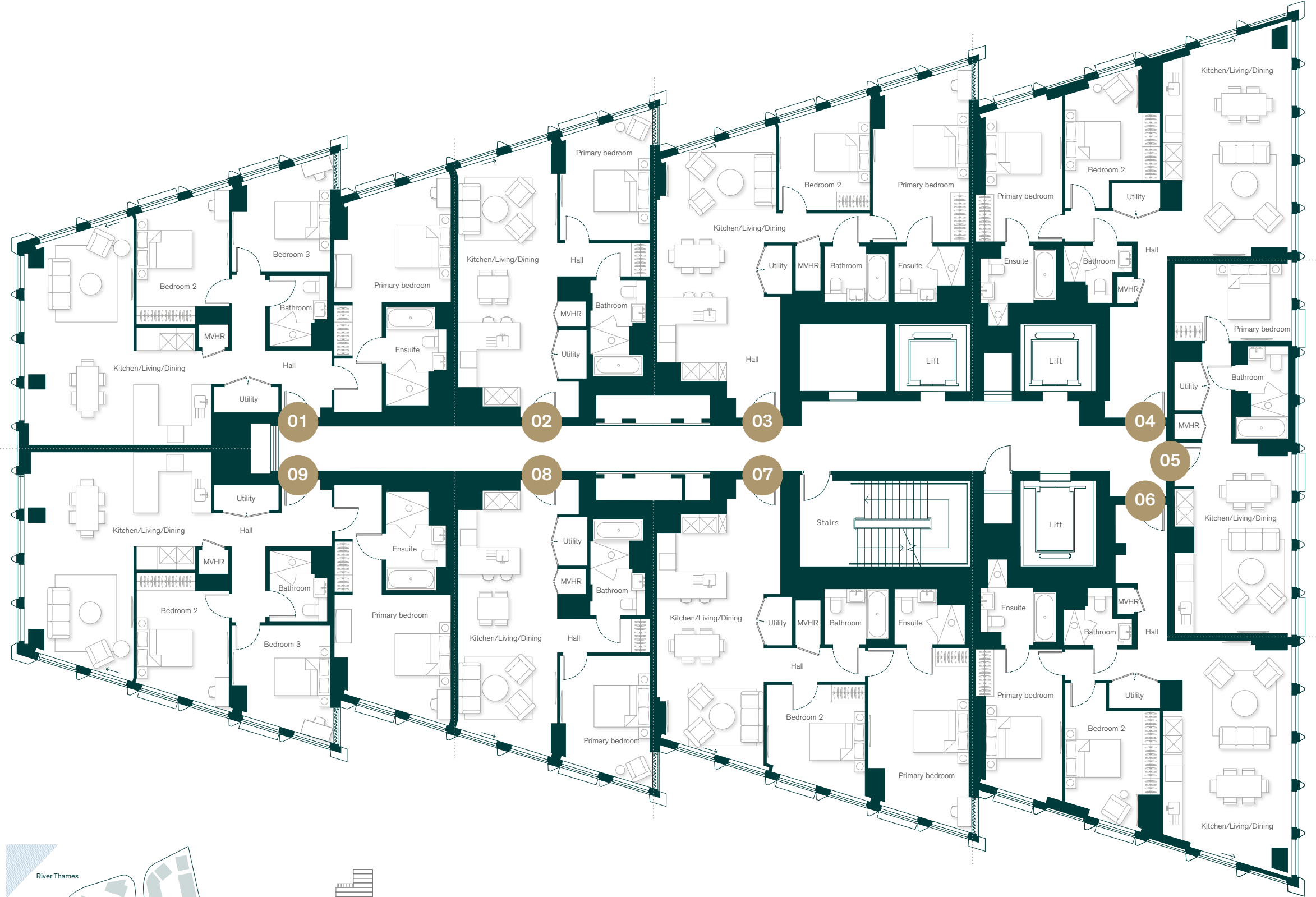
2 bedroom	97.08 sq m/1,045 sq ft	
Kitchen/living/dining	8.67 × 3.83m	28' 5" × 12' 7"
Primary bedroom	6.10 × 3.60m	20' 0" × 11' 10"
Bedroom 2	3.69 × 3.53m	12' 1" × 11' 7"

Apartment 10.08 - 16.08

1 bedroom	66.46 sq m/715 sq ft	
Kitchen/living/dining	9.03 × 3.55m	29' 7" × 11' 8"
Primary bedroom	4.23 × 3.21m	13' 11" × 10' 6"

Apartment 10.09 - 16.09

3 bedroom	128.14 sq m/1,379 sq ft	
Kitchen/living/dining	7.68 × 6.69m	25' 2" × 21' 11"
Primary bedroom	4.18 × 4.17m	13' 9" × 13' 8"
Bedroom 2	3.84 × 3.31m	12' 7" × 10' 10"
Bedroom 3	3.70 × 3.57m	12' 2" × 11' 8"



Levels 17 - 19



Apartment 17.01 - 19.01

3 bedroom	128.1 sq m/1,379 sq ft	
Kitchen/living/dining	7.67 × 6.69m	25' 2" × 21' 11"
Primary bedroom	4.18 × 4.17m	13' 9" × 13' 8"
Bedroom 2	3.84 × 3.31m	12' 7" × 10' 10"
Bedroom 3	3.69 × 3.57m	12' 1" × 11' 8"

Apartment 17.02 - 19.02

1 bedroom	67.52 sq m/727 sq ft	
Kitchen/living/dining	9.03 × 3.55m	29' 7" × 11' 8"
Primary bedroom	4.18 × 3.21m	13' 9" × 10' 6"

Apartment 17.03 - 19.03

2 bedroom	95.58 sq m/1,029 sq ft	
Kitchen/living/dining	8.62 × 4.27m	28' 3" × 14' 0"
Primary bedroom	5.87 × 3.43m	19' 3" × 11' 3"
Bedroom 2	3.62 × 3.26m	11' 10" × 10' 8"

Apartment 17.04 - 19.04

2 bedroom	97.97 sq m/1,055 sq ft	
Kitchen/living/dining	7.74 × 3.91m	25' 5" × 12' 10"
Primary bedroom	4.94 × 2.75m	16' 2" × 9' 0"
Bedroom 2	3.86 × 2.75m	12' 8" × 9' 0"

Apartment 17.05 - 19.05

1 bedroom	56.06 sq m/603 sq ft	
Kitchen/living/dining	6.79 × 3.50m	22' 3" × 11' 6"
Primary bedroom	4.20 × 2.75m	13' 9" × 9' 0"

Apartment 17.06 - 19.06

2 bedroom	97.8 sq m/1,053 sq ft	
Kitchen/living/dining	7.78 × 3.91m	25' 6" × 12' 10"
Primary bedroom	5.28 × 2.75m	17' 4" × 9' 0"
Bedroom 2	4.02 × 2.75m	13' 2" × 9' 0"

Apartment 17.07 - 19.07

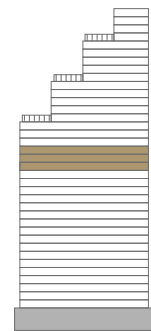
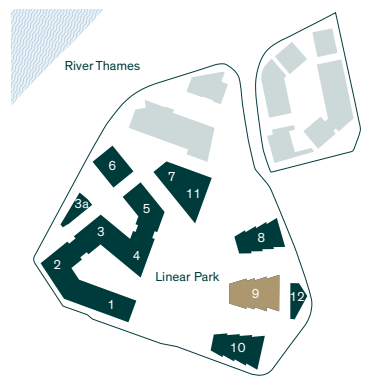
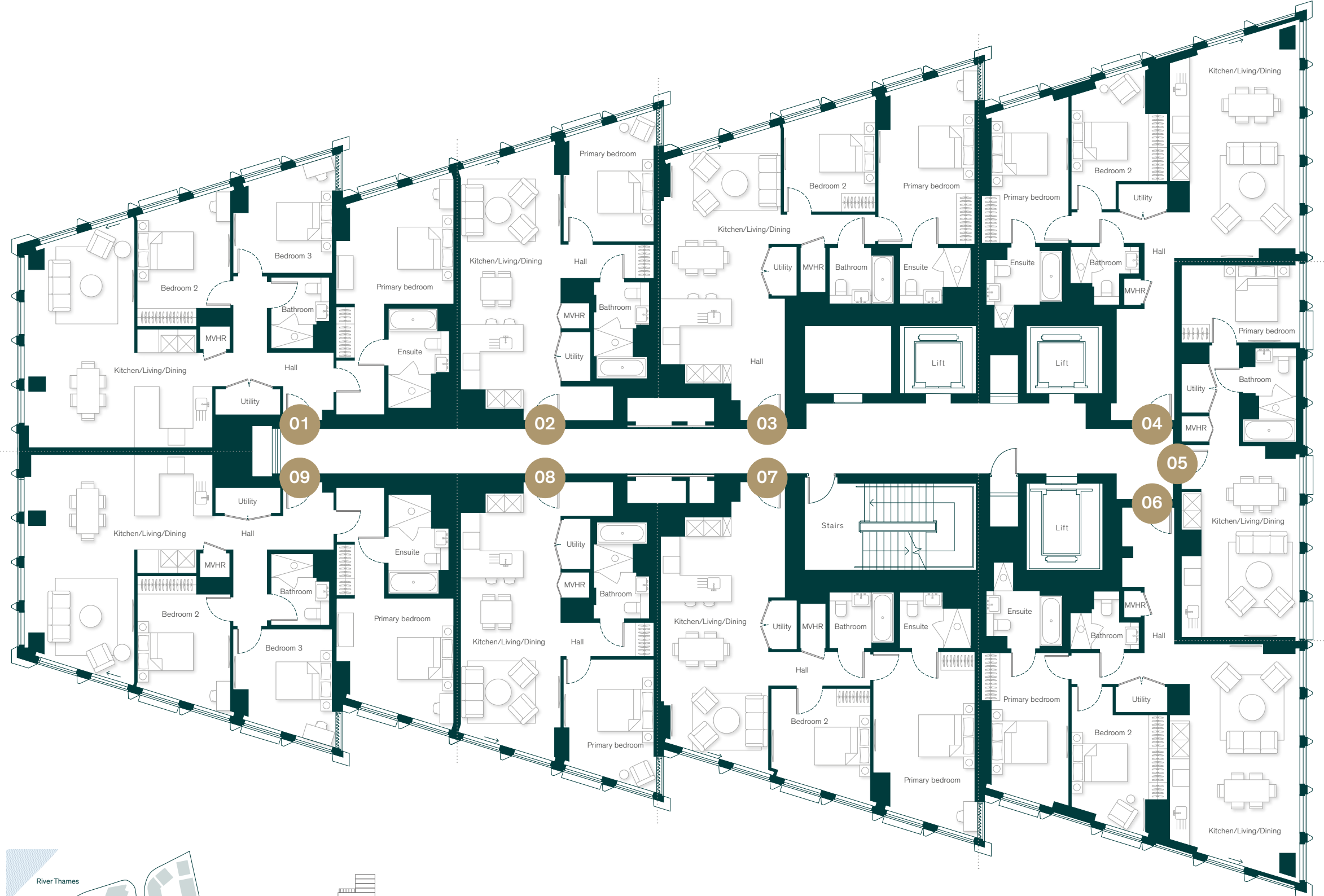
2 bedroom	97.08 sq m/1,045 sq ft	
Kitchen/living/dining	8.67 × 3.83m	28' 5" × 12' 7"
Primary bedroom	6.10 × 3.60m	20' 0" × 11' 10"
Bedroom 2	3.72 × 3.53m	12' 2" × 11' 7"

Apartment 17.08 - 19.08

1 bedroom	67.59 sq m/728 sq ft	
Kitchen/living/dining	9.03 × 3.55m	29' 7" × 11' 8"
Primary bedroom	4.23 × 3.21m	13' 11" × 10' 6"

Apartment 17.09 - 19.09

3 bedroom	128.14 sq m/1,379 sq ft	
Kitchen/living/dining	7.68 × 6.69m	25' 2" × 21' 11"
Primary bedroom	4.18 × 4.17m	13' 9" × 13' 8"
Bedroom 2	3.84 × 3.31m	12' 7" × 10' 10"
Bedroom 3	3.70 × 3.57m	12' 2" × 11' 8"



Levels 20 – 21



Apartment 20.01 – 21.01

3 bedroom	126.75 sq m/1,364 sq ft	
Kitchen/living/dining	6.99 × 5.15m	22' 11" × 16' 11"
Primary bedroom	4.18 × 4.17m	13' 9" × 13' 8"
Bedroom 2	3.84 × 3.31m	12' 7" × 10' 10"
Bedroom 3	3.69 × 3.57m	12' 1" × 11' 8"

Apartment 20.02 – 21.02

1 bedroom	67.7 sq m/729 sq ft	
Kitchen/living/dining	9.03 × 3.55m	29' 7" × 11' 8"
Primary bedroom	4.18 × 3.21m	13' 9" × 10' 6"

Apartment 20.03 – 21.03

2 bedroom	95.68 sq m/1,030 sq ft	
Kitchen/living/dining	8.62 × 4.27m	28' 3" × 14' 0"
Primary bedroom	5.87 × 3.43m	19' 3" × 11' 3"
Bedroom 2	3.62 × 3.26m	11' 10" × 10' 8"

Apartment 20.04 – 21.04

2 bedroom	97.97 sq m/1,055 sq ft	
Kitchen/living/dining	7.74 × 3.91m	25' 5" × 12' 10"
Primary bedroom	4.94 × 2.75m	16' 2" × 9' 0"
Bedroom 2	3.86 × 2.75m	12' 8" × 9' 0"

Apartment 20.05 – 21.05

1 bedroom	56.06 sq m/603 sq ft	
Kitchen/living/dining	6.79 × 3.50m	22' 3" × 11' 6"
Primary bedroom	4.2 × 2.75m	13' 9" × 9' 0"

Apartment 20.06 – 21.06

2 bedroom	97.8 sq m/1,053 sq ft	
Kitchen/living/dining	7.78 × 3.91m	25' 6" × 12' 10"
Primary bedroom	5.28 × 2.75m	17' 4" × 9' 0"
Bedroom 2	4.02 × 2.75m	13' 2" × 9' 0"

Apartment 20.07 – 21.07

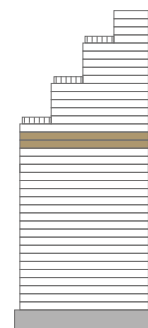
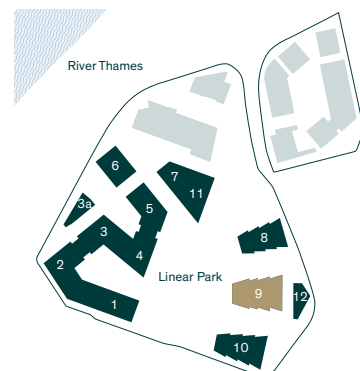
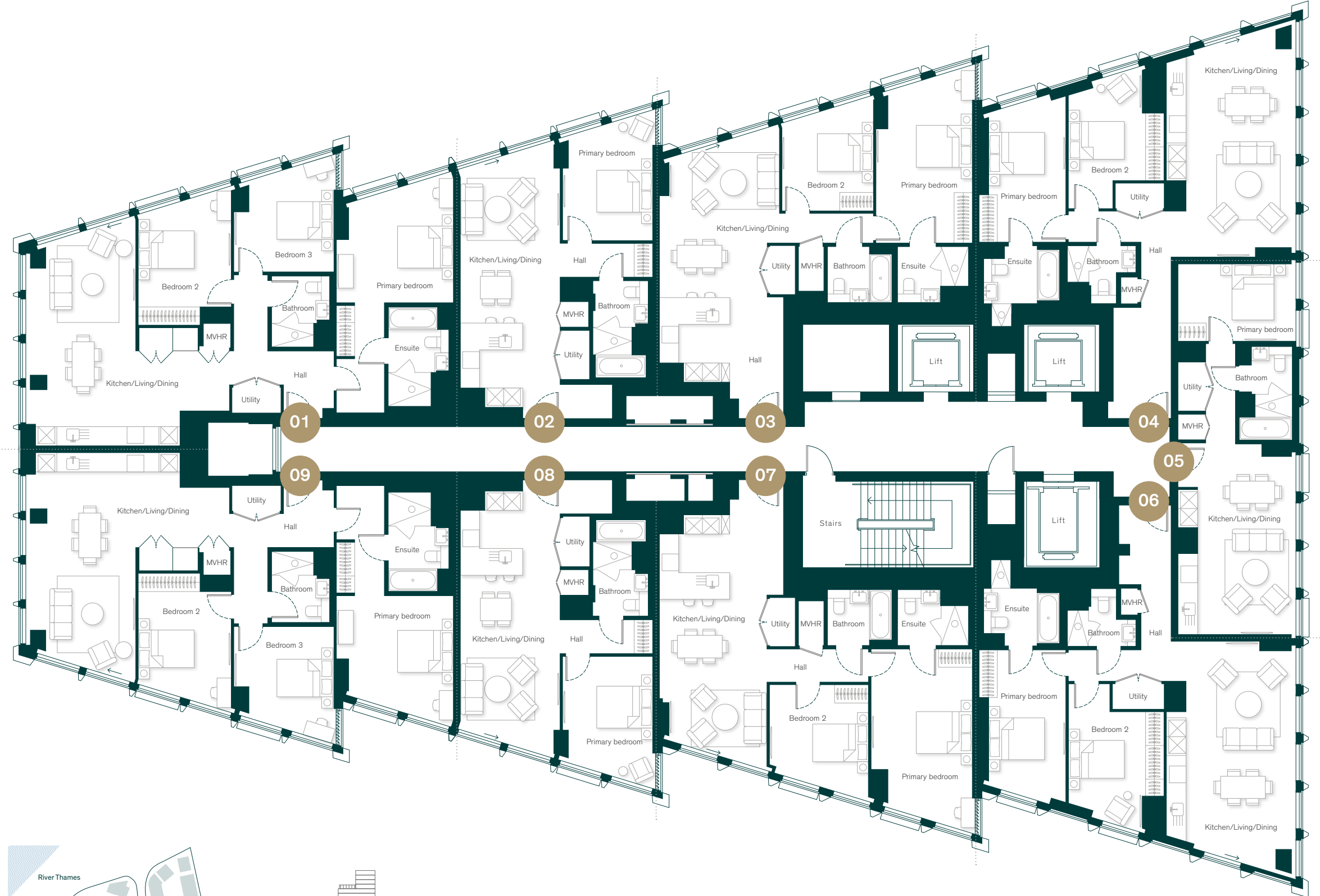
2 bedroom	97.08 sq m/1,045 sq ft	
Kitchen/living/dining	8.67 × 3.83m	28' 5" × 12' 7"
Primary bedroom	6.10 × 3.60m	20' 0" × 11' 10"
Bedroom 2	3.72 × 3.53m	12' 2" × 11' 7"

Apartment 20.08 – 21.08

1 bedroom	67.76 sq m/729 sq ft	
Kitchen/living/dining	9.03 × 3.55m	29' 7" × 11' 8"
Primary bedroom	4.23 × 3.21m	13' 11" × 10' 6"

Apartment 20.09 – 21.09

3 bedroom	126.76 sq m/1,364 sq ft	
Kitchen/living/dining	6.99 × 5.15m	22' 11" × 16' 11"
Primary bedroom	4.18 × 4.17m	13' 9" × 13' 8"
Bedroom 2	3.84 × 3.31m	12' 7" × 10' 10"
Bedroom 3	3.70 × 3.57m	12' 2" × 11' 8"



Level 22



Apartment 22.01

3 bedroom	126.76 sq m/1,364 sq ft	
Kitchen/living/dining	6.99 × 5.15m	22' 11" × 16' 11"
Primary bedroom	4.18 × 4.17m	13' 9" × 13' 8"
Bedroom 2	3.84 × 3.31m	12' 7" × 10' 10"
Bedroom 3	3.70 × 3.57m	12' 2" × 11' 8"

Apartment 22.02

1 bedroom	67.68 sq m/729 sq ft	
Kitchen/living/dining	9.03 × 3.55m	29' 7" × 11' 8"
Primary bedroom	4.18 × 3.21m	13' 9" × 10' 6"

Apartment 22.03

2 bedroom	95.68 sq m/1,030 sq ft	
Kitchen/living/dining	8.62 × 4.27m	28' 3" × 14' 0"
Primary bedroom	5.87 × 3.43m	19' 3" × 11' 3"
Bedroom 2	3.62 × 3.26m	11' 10" × 10' 8"

Apartment 22.04

2 bedroom	97.97 sq m/1,055 sq ft	
Kitchen/living/dining	7.74 × 3.91m	25' 5" × 12' 10"
Primary bedroom	4.94 × 2.75m	16' 2" × 9' 0"
Bedroom 2	3.86 × 2.75m	12' 8" × 9' 0"

Apartment 22.05

1 bedroom	56.06 sq m/603 sq ft	
Kitchen/living/dining	6.79 × 3.50m	22' 3" × 11' 6"
Primary bedroom	4.20 × 2.75m	13' 9" × 9' 0"

Apartment 22.06

2 bedroom	97.8 sq m/1,053 sq ft	
Kitchen/living/dining	7.78 × 3.91m	25' 6" × 12' 10"
Primary bedroom	5.28 × 2.75m	17' 4" × 9' 0"
Bedroom 2	4.02 × 2.75m	13' 2" × 9' 0"

Apartment 22.07

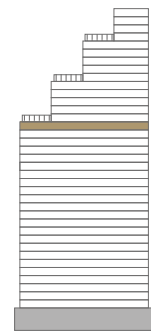
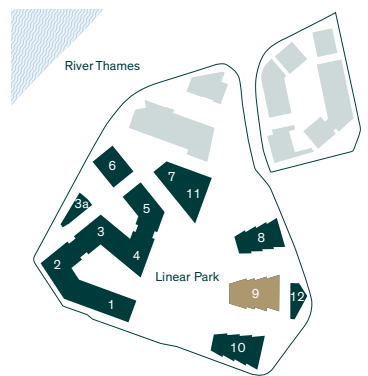
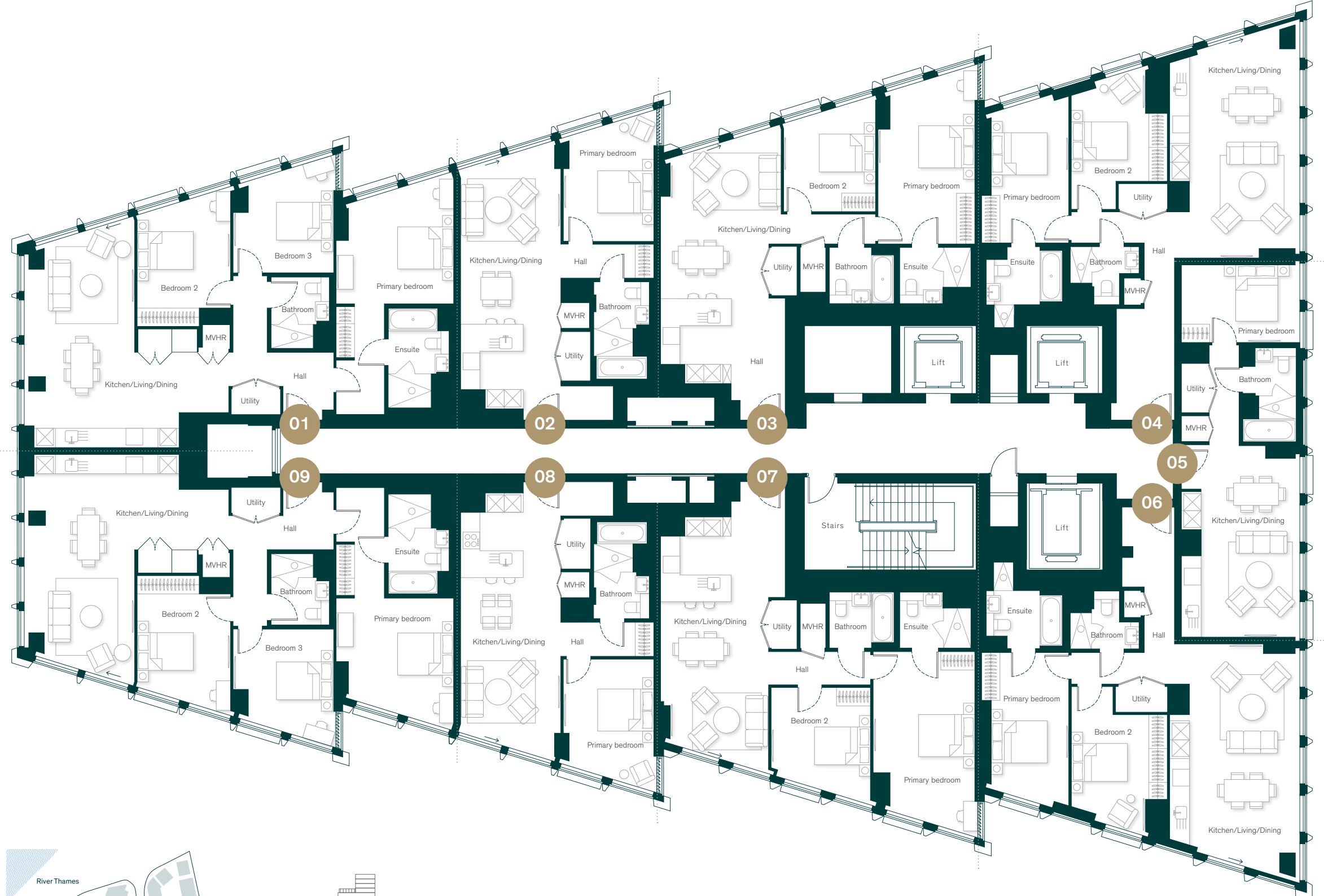
2 bedroom	97.08 sq m/1,045 sq ft	
Kitchen/living/dining	8.67 × 3.83m	28' 5" × 12' 7"
Primary bedroom	6.10 × 3.60m	20' 0" × 11' 10"
Bedroom 2	3.72 × 3.53m	12' 2" × 11' 7"

Apartment 22.08

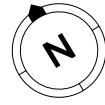
1 bedroom	67.75 sq m/729 sq ft	
Kitchen/living/dining	9.03 × 3.55m	29' 7" × 11' 8"
Primary bedroom	4.23 × 3.21m	13' 11" × 10' 6"

Apartment 22.09

3 bedroom	126.77 sq m/1,365 sq ft	
Kitchen/living/dining	6.99 × 5.15m	22' 11" × 16' 11"
Primary bedroom	4.18 × 4.17m	13' 9" × 13' 8"
Bedroom 2	3.84 × 3.31m	12' 7" × 10' 10"
Bedroom 3	3.70 × 3.57m	12' 2" × 11' 8"



Level 23



Apartment 23.01

3 bedroom	209.79 sq m/2,258.2 sq ft	
Terrace	71.57 sq m/770.4 sq ft	
Kitchen/living/dining	9.79 × 8.39m	32' 1" × 27' 6"
Primary bedroom	5.76 × 4.41m	18' 11" × 14' 6"
Bedroom 2	4.78 × 2.88m	15' 8" × 9' 5"
Bedroom 3	3.46 × 2.94m	11' 4" × 9' 8"

Apartment 23.02

2 bedroom	98.78 sq m/1,063 sq ft	
Kitchen/living/dining	7.74 × 3.91m	25' 5" × 12' 10"
Primary bedroom	4.94 × 2.75m	16' 2" × 9' 0"
Bedroom 2	3.86 × 2.75m	12' 8" × 9' 0"

Apartment 23.03

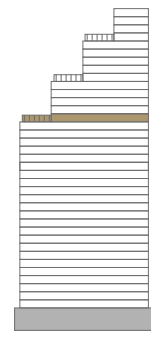
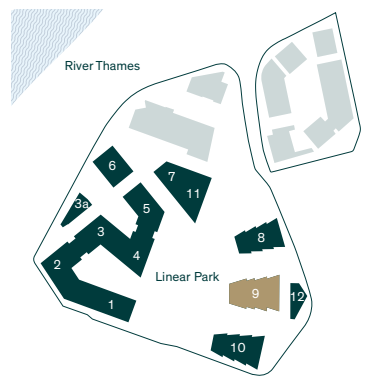
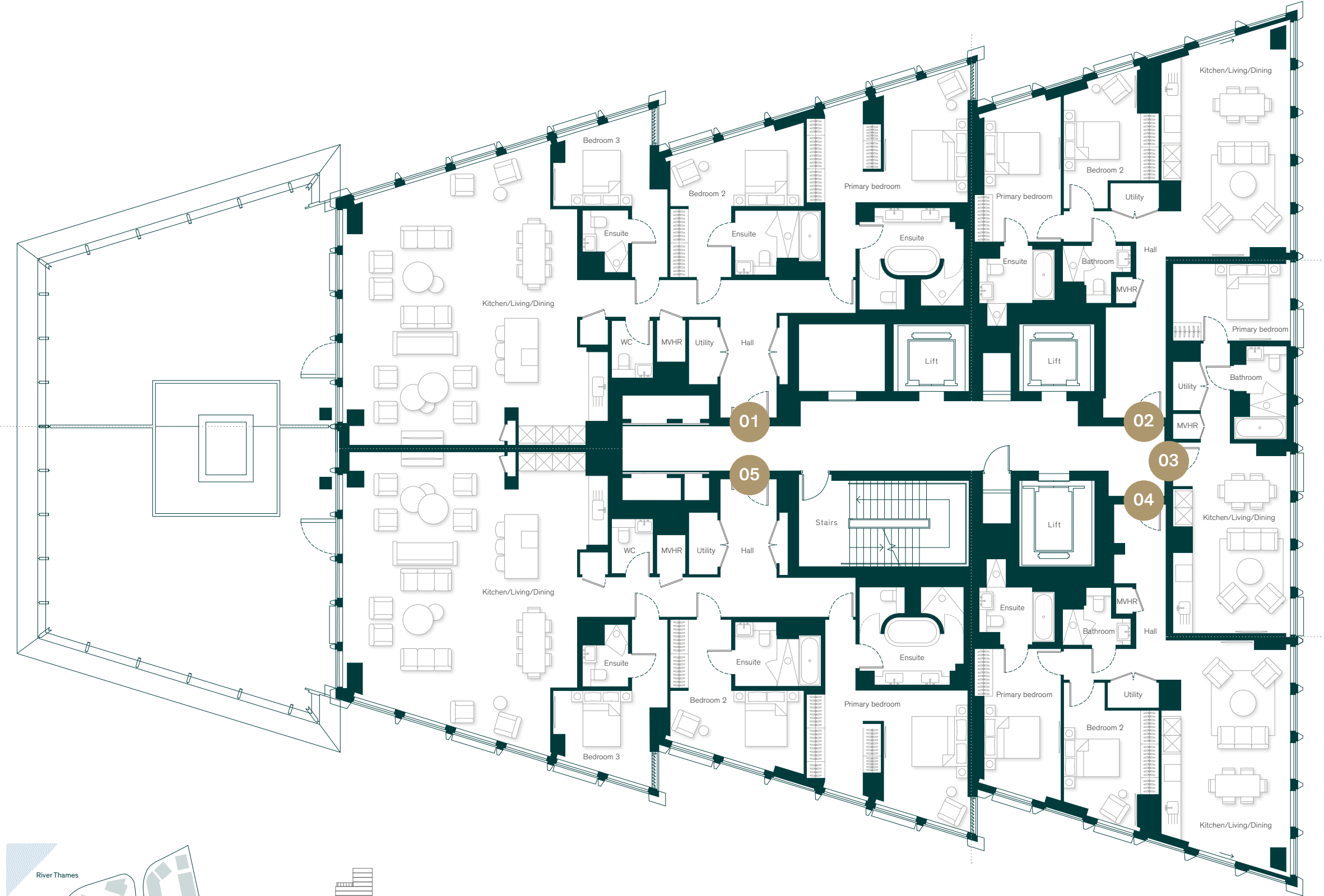
1 bedroom	56.13 sq m/604 sq ft	
Kitchen/living/dining	6.79 × 3.50m	22' 3" × 11' 6"
Primary bedroom	4.20 × 2.75m	13' 9" × 9' 0"

Apartment 23.04

2 bedroom	98.55 sq m/1,061 sq ft	
Kitchen/living/dining	7.78 × 3.91m	25' 6" × 12' 10"
Primary bedroom	5.28 × 2.75m	17' 4" × 9' 0"
Bedroom 2	4.02 × 2.75m	13' 2" × 9' 0"

Apartment 23.05

3 bedroom	211.33 sq m/2,274.8 sq ft	
Terrace	81.32 sq m/875.3 sq ft	
Kitchen/living/dining	9.79 × 8.39m	32' 1" × 27' 6"
Primary bedroom	5.76 × 4.53m	18' 11" × 14' 10"
Bedroom 2	4.78 × 2.86m	15' 8" × 9' 4"
Bedroom 3	3.46 × 2.91m	11' 4" × 9' 7"



Levels 24 – 26



Apartment 24.01 – 26.01

3 bedroom	210.03 sq m/2,261 sq ft	
Kitchen/living/dining	9.79 × 8.39m	32' 1" × 27' 6"
Primary bedroom	5.74 × 4.41m	18' 10" × 14' 6"
Bedroom 2	4.80 × 2.88m	15' 9" × 9' 5"
Bedroom 3	3.46 × 2.94m	11' 4" × 9' 8"

Apartment 24.02 – 26.02

2 bedroom	98.78 sq m/1,063 sq ft	
Kitchen/living/dining	7.75 × 3.91m	25' 5" × 12' 10"
Primary bedroom	4.94 × 2.75m	16' 2" × 9' 0"
Bedroom 2	3.87 × 2.75m	12' 8" × 9' 0"

Apartment 24.03 – 26.03

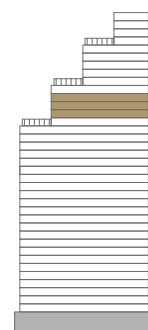
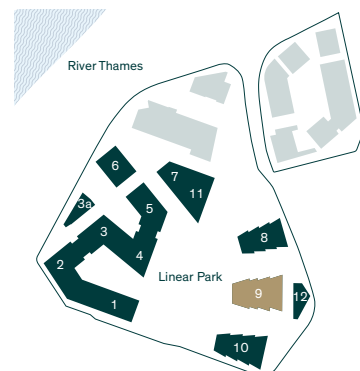
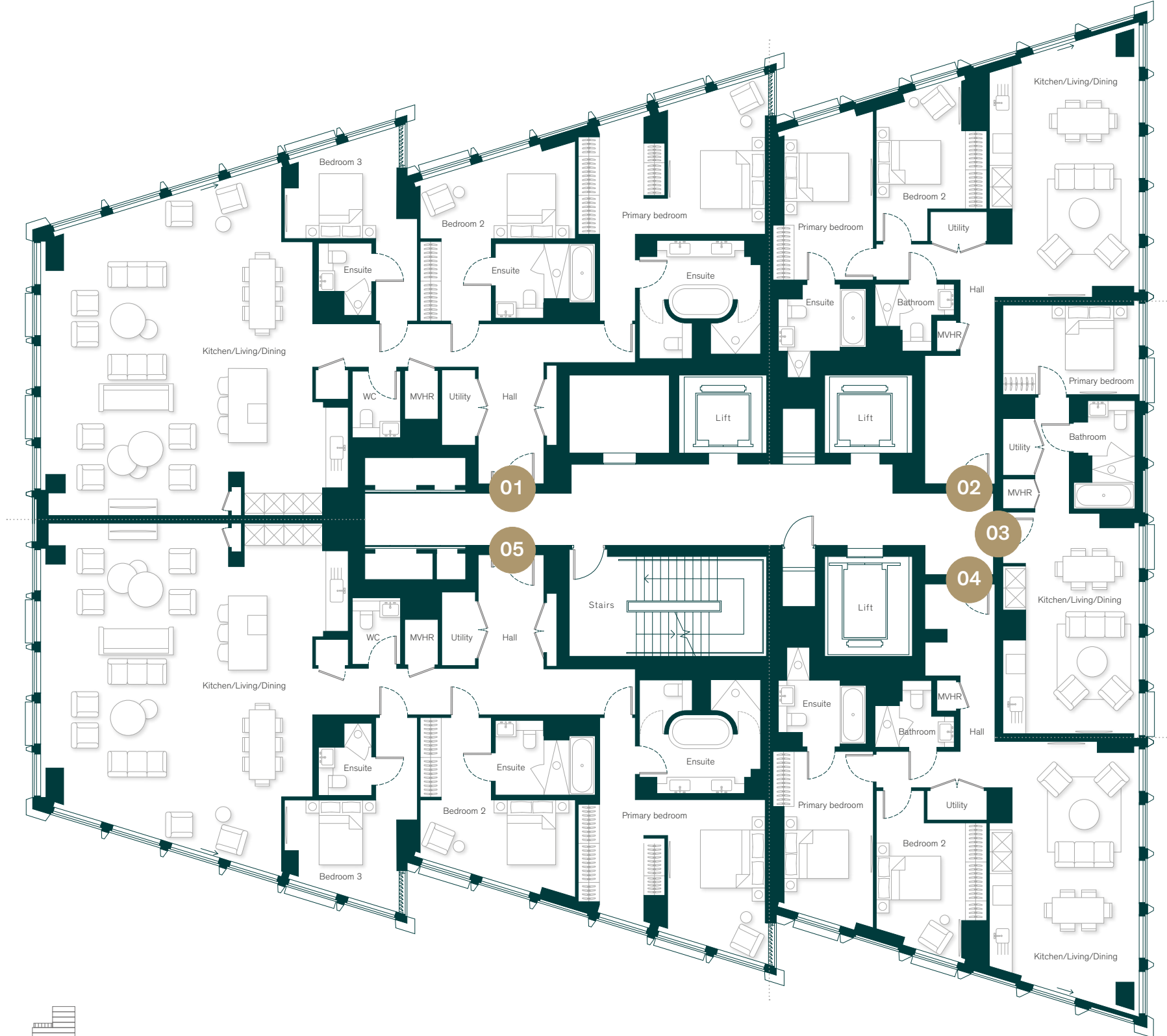
1 bedroom	56.13 sq m/604 sq ft	
Kitchen/living/dining	6.79 × 3.50m	22' 3" × 11' 6"
Primary bedroom	4.20 × 2.75m	13' 9" × 9' 0"

Apartment 24.04 – 26.04

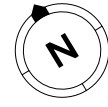
2 bedroom	98.68 sq m/1,062 sq ft	
Kitchen/living/dining	7.78 × 3.91m	25' 6" × 12' 10"
Primary bedroom	5.28 × 2.75m	17' 4" × 9' 0"
Bedroom 2	4.03 × 2.75m	13' 2" × 9' 0"

Apartment 24.05 – 26.05

3 bedroom	210.99 sq m/2,271 sq ft	
Kitchen/living/dining	9.79 × 8.39m	32' 1" × 27' 6"
Primary bedroom	5.74 × 4.54m	18' 10" × 14' 11"
Bedroom 2	4.80 × 2.86m	15' 9" × 9' 4"
Bedroom 3	3.46 × 2.91m	11' 4" × 9' 7"



Level 27



Apartment 27.01

3 bedroom	210.13 sq m/2,262 sq ft	
Kitchen/living/dining	9.79 × 8.39m	32' 1" × 27' 6"
Primary bedroom	5.74 × 4.41m	18' 10" × 14' 6"
Bedroom 2	4.80 × 2.88m	15' 9" × 9' 5"
Bedroom 3	3.46 × 2.94m	11' 4" × 9' 8"

Apartment 27.02

2 bedroom	94.44 sq m/1,017 sq ft	
Kitchen/living/dining	7.75 × 3.91m	25' 5" × 12' 10"
Primary bedroom	4.94 × 2.75m	16' 2" × 9' 0"
Bedroom 2	3.87 × 2.75m	12' 8" × 9' 0"

Apartment 27.03

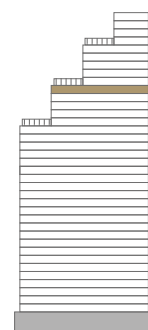
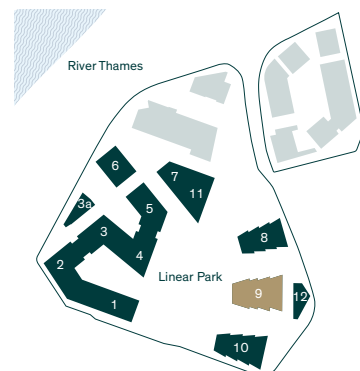
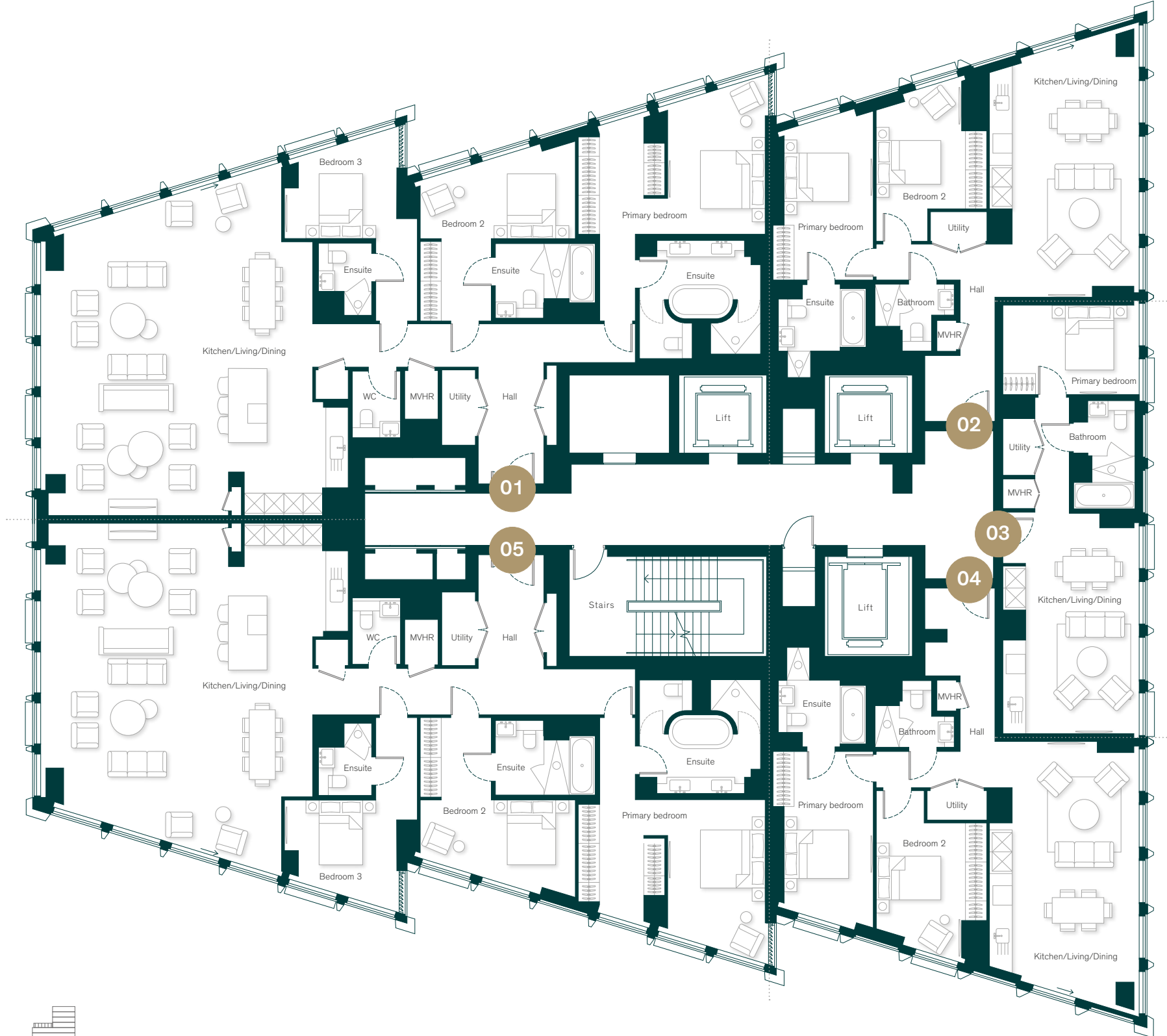
1 bedroom	56.13 sq m/604 sq ft	
Kitchen/living/dining	6.79 × 3.50m	22' 3" × 11' 6"
Primary bedroom	4.20 × 2.75m	13' 9" × 9' 0"

Apartment 27.04

2 bedroom	98.26 sq m/1,058 sq ft	
Kitchen/living/dining	7.78 × 3.91m	25' 6" × 12' 10"
Primary bedroom	5.28 × 2.75m	17' 4" × 9' 0"
Bedroom 2	4.03 × 2.75m	13' 2" × 9' 0"

Apartment 27.05

3 bedroom	211.64 sq m/2,278 sq ft	
Kitchen/living/dining	9.79 × 8.39m	32' 1" × 27' 6"
Primary bedroom	5.74 × 4.54m	18' 10" × 14' 11"
Bedroom 2	4.80 × 2.86m	15' 9" × 9' 4"
Bedroom 3	3.46 × 2.91m	11' 4" × 9' 7"



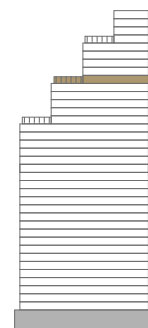
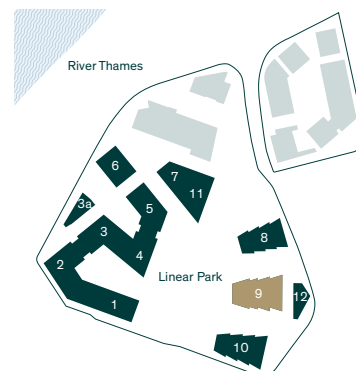
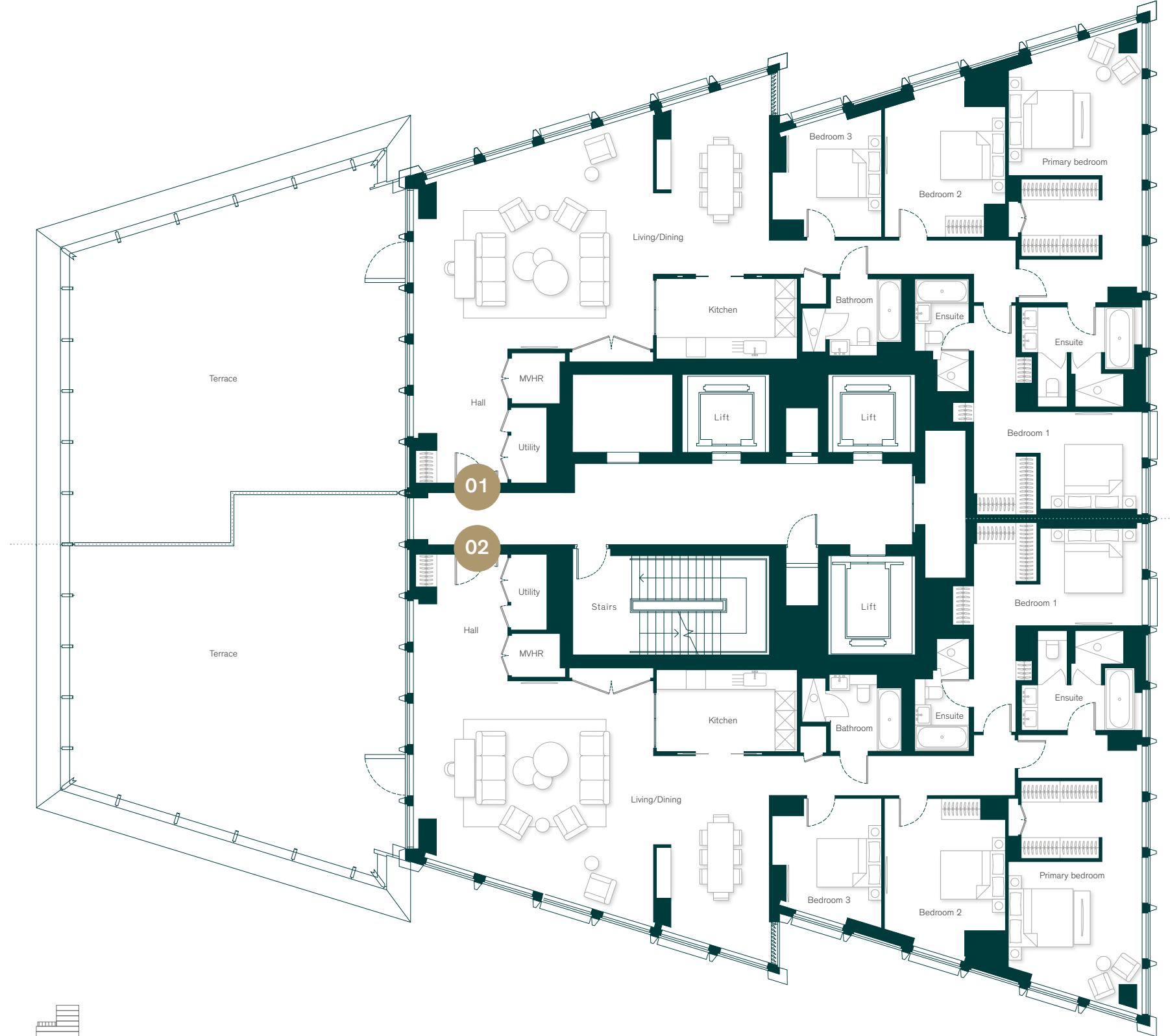
Level 28

Apartment 28.01

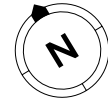
4 bedroom	226.76 sq m/2,440.8 sq ft	
Terrace	104.10 sq m/1,120.5 sq ft	
Kitchen/living/dining	11.07 × 9.61m	36' 4" × 31' 6"
Primary bedroom	7.93 × 4.12m	26' 0" × 13' 6"
Bedroom 2	5.20 × 3.00m	17' 1" × 9' 10"
Bedroom 3	4.33 × 3.73m	14' 2" × 12' 3"
Bedroom 4	3.85 × 3.37m	12' 8" × 11' 1"

Apartment 28.02

4 bedroom	231.42 sq m/2,491.0 sq ft	
Terrace	104.10 sq m/1,120.5 sq ft	
Kitchen/living/dining	11.07 × 9.61m	36' 4" × 31' 6"
Primary bedroom	7.93 × 4.12m	26' 0" × 13' 6"
Bedroom 2	5.20 × 3.00m	17' 1" × 9' 10"
Bedroom 3	4.38 × 3.73m	14' 4" × 12' 3"
Bedroom 4	3.90 × 3.37m	12' 10" × 11' 1"



Levels 29 – 30

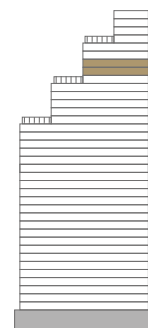
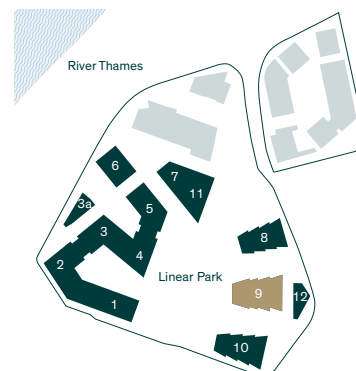
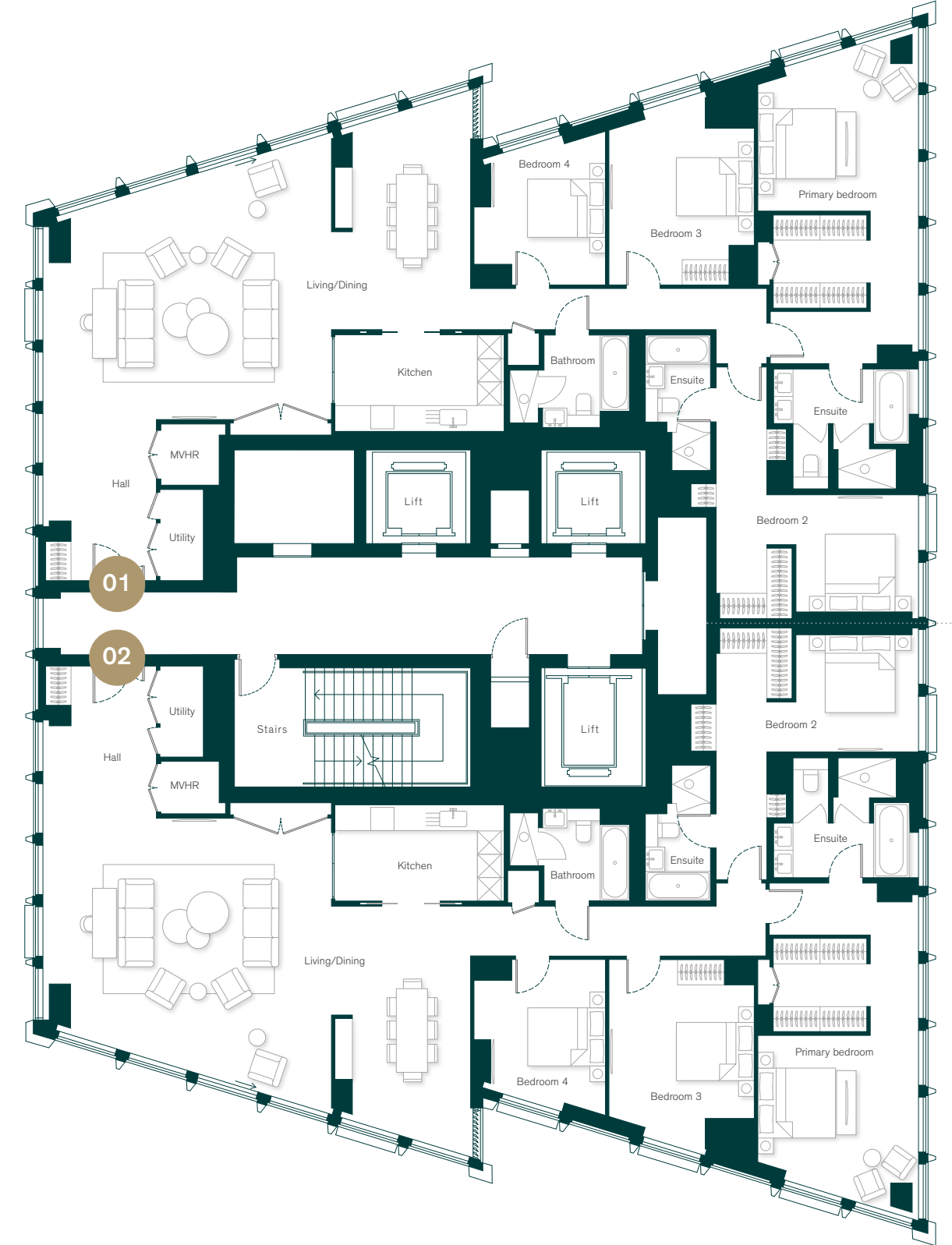


Apartment 29.01 – 30.01

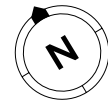
4 bedroom	226.18 sq m/2,435 sq ft	
Kitchen/living/dining	11.07 × 9.61m	36' 4" × 31' 6"
Primary bedroom	7.93 × 4.12m	26' 0" × 13' 6"
Bedroom 2	5.20 × 3.00m	17' 1" × 9' 10"
Bedroom 3	4.33 × 3.73m	14' 2" × 12' 3"
Bedroom 4	3.85 × 3.37m	12' 8" × 11' 1"

Apartment 29.02 – 30.02

4 bedroom	230.5 sq m/2,481 sq ft	
Kitchen/living/dining	11.07 × 9.61m	36' 4" × 31' 6"
Primary bedroom	7.93 × 4.12m	26' 0" × 13' 6"
Bedroom 2	5.20 × 3.00m	17' 1" × 9' 10"
Bedroom 3	4.38 × 3.73m	14' 4" × 12' 3"
Bedroom 4	3.90 × 3.37m	12' 10" × 11' 1"



Level 31

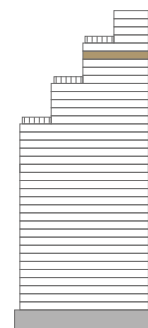
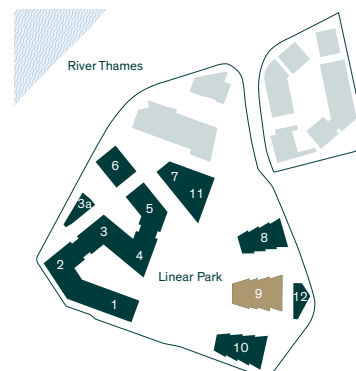


Apartment 31.01

4 bedroom	226.91 sq m/2,442 sq ft	
Kitchen/living/dining	11.07 × 9.61m	36' 4" × 31' 6"
Primary bedroom	7.93 × 4.12m	26' 0" × 13' 6"
Bedroom 2	5.20 × 3.00m	17' 1" × 9' 10"
Bedroom 3	4.81 × 3.70m	15' 9" × 12' 2"
Bedroom 4	3.78 × 3.40m	12' 5" × 11' 2"

Apartment 31.02

4 bedroom	227.47 sq m/2,448 sq ft	
Kitchen/living/dining	11.07 × 9.61m	36' 4" × 31' 6"
Primary bedroom	7.93 × 4.12m	26' 0" × 13' 6"
Bedroom 2	5.20 × 3.00m	17' 1" × 9' 10"
Bedroom 3	4.89 × 3.73m	16' 0" × 12' 3"
Bedroom 4	3.82 × 3.37m	12' 6" × 11' 1"



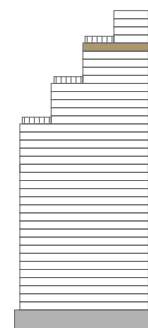
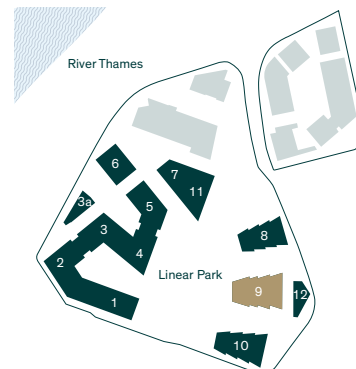
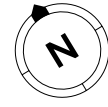
Level 32

Apartment 32.01

3 bedroom	223.06 sq m/2,401 sq ft	
Living/dining	10.99 × 9.61m	36' 1" × 31' 6"
Kitchen	3.30 × 2.34m	10' 10" × 7' 8"
Primary bedroom	7.93 × 4.77m	26' 0" × 15' 8"
Bedroom 2	5.21 × 3.03m	17' 1" × 9' 11"
Bedroom 3	5.25 × 3.39m	17' 2" × 11' 1"

Apartment 32.02

3 bedroom	198.29 sq m/2,134 sq ft	
Kitchen/living/dining	10.99 × 9.61m	36' 1" × 31' 6"
Primary bedroom	4.19 × 3.97m	13' 9" × 13' 0"
Bedroom 2	5.21 × 2.79m	17' 1" × 9' 2"
Bedroom 3	3.86 × 3.51m	12' 8" × 11' 6"





INTERNATIONALLY RENOWNED DESIGN TEAM

A best-in-class team has been brought together to deliver Building No.9 as well as to contribute to the Thames City destination as a whole.



Yun House — Four Seasons Hotel Kuala Lumpur



Burj Khalifa — Dubai



One Hyde Park — London



HBA Residential — Private Residence

AB CONCEPT

Founded in 1999 by Ed Ng and Terence Ngan, AB Concept is an international interior design and architecture studio focused on creating luxury environments across the hospitality, commercial and residential sectors. The studio's approach results in projects offering bespoke experiences through narrative-driven interiors with meticulous attention to detail.

SOM

Skidmore, Owings & Merrill LLP (SOM) is one of the largest and most influential architecture, interior design, engineering and urban planning firms in the world. They are renowned for their iconic buildings such as Burj Khalifa and their commitment to design excellence, innovation, and sustainability.

GILLESPIES

Gillespies is an award-winning landscape architecture and urban design practice with over 50 years' experience. Innovative and groundbreaking, their designs are at the forefront of major developments around the world.

HBA

HBA Residential, (the residential specialist within Hirsch Bedner Associates), are masters of interior design whose ideas have informed the signature look of many of the most noted hotels, luxury brands, urban resort spas and residential complexes in the world.

FOR ENQUIRIES PLEASE CONTACT:

Q INVESTMENTS INTERNATIONAL LTD

Tel: +447985487333

Email: office@qinvestments.london

<https://qinvestments.london>

